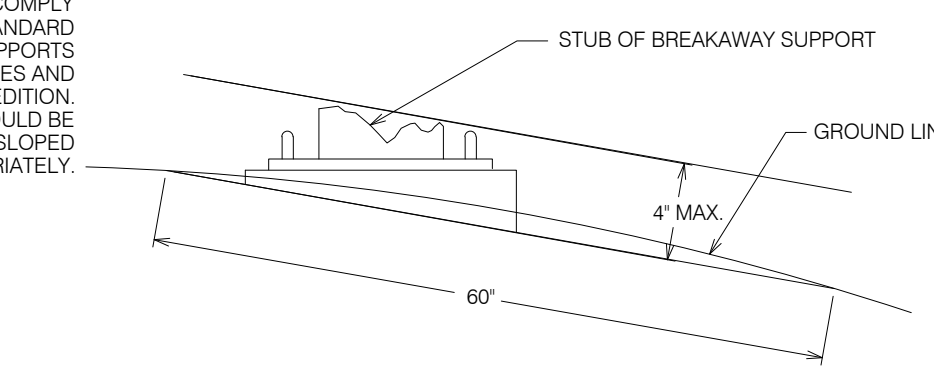


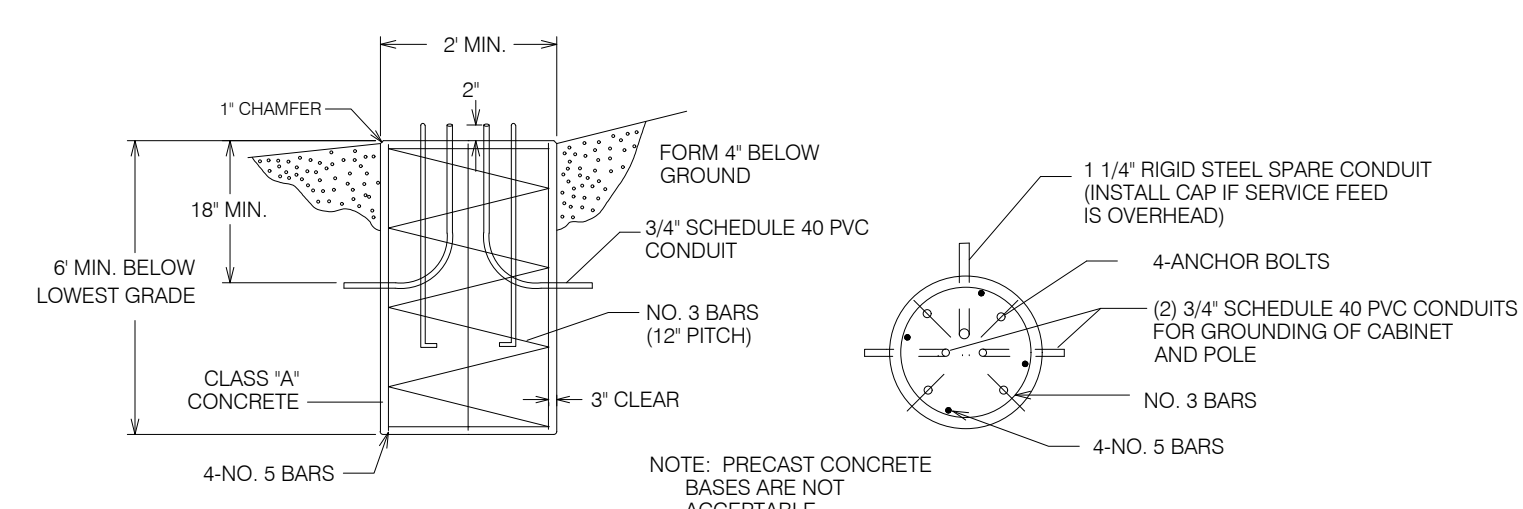
THE BOTTOM OF THE LOWER SIGNAL FACE HOUSING SHALL NOT BE LESS THAN 12 FEET ABOVE THE PAVEMENT GRADE OF THE CENTER OF THE ROADWAY. THE TOP OF THE UPPER SIGNAL FACE HOUSING SHALL NOT BE MORE THAN 24 FEET ABOVE THE PAVEMENT GRADE OF THE CENTER OF THE ROADWAY.

8-17-2015

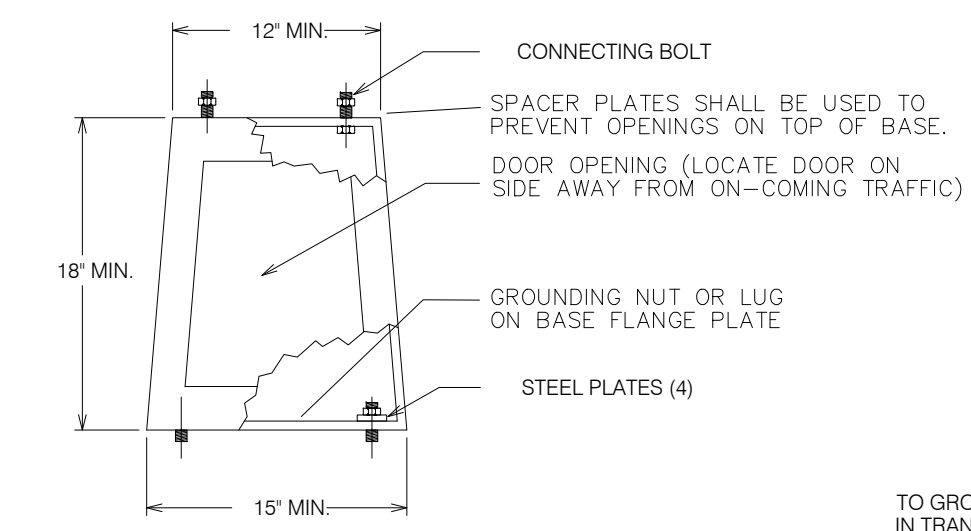
BREAKAWAY SUPPORTS SHALL COMPLY WITH SECTION 12 OF THE STANDARD SPECIFICATIONS FOR STRUCTURAL SUPPORTS FOR HIGHWAY SIGNS, LUMINAIRES AND TRAFFIC SIGNALS, LATEST EDITION. THE SURROUNDING SURFACE SHOULD BE REMOVED OR FILLED AND SLOPED APPROPRIATELY.



BREAKAWAY SUPPORT STUB HEIGHT MEASUREMENT

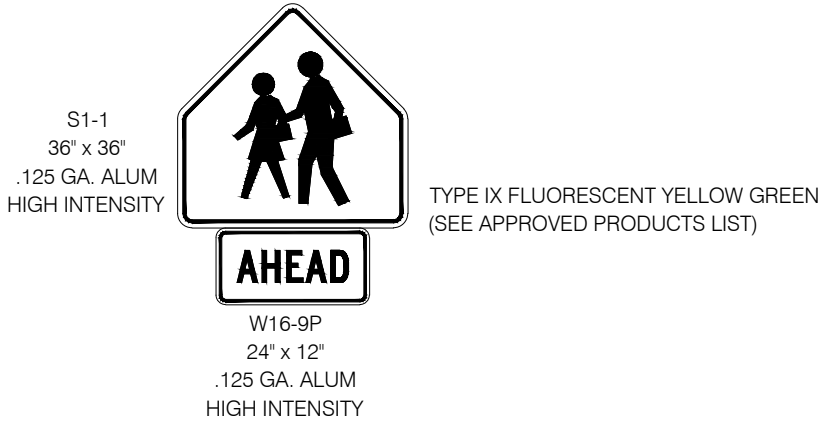


FOUNDATION DETAIL



CAST ALUMINUM TRANSFORMER BASE

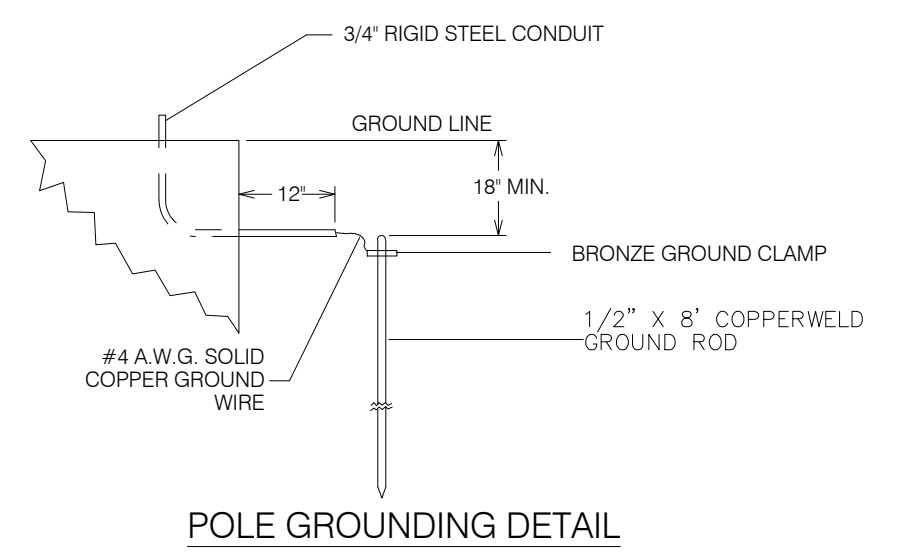
NOTE: ALL TRANSFORMER BASES SHALL CONFORM TO THE STANDARD SPECIFICATIONS FOR STRUCTURAL SUPPORTS FOR HIGHWAY SIGNS, LUMINAIRES AND TRAFFIC SIGNALS AS PUBLISHED BY THE AMERICAN ASSOCIATION OF STATE HIGHWAY AND TRANSPORTATION OFFICIALS, LATEST EDITION. ALL TRANSFORMER BASE DOORS SHALL BE CONSTRUCTED OF HIGH-DENSITY POLYETHYLENE IN A MATCHING COLOR.



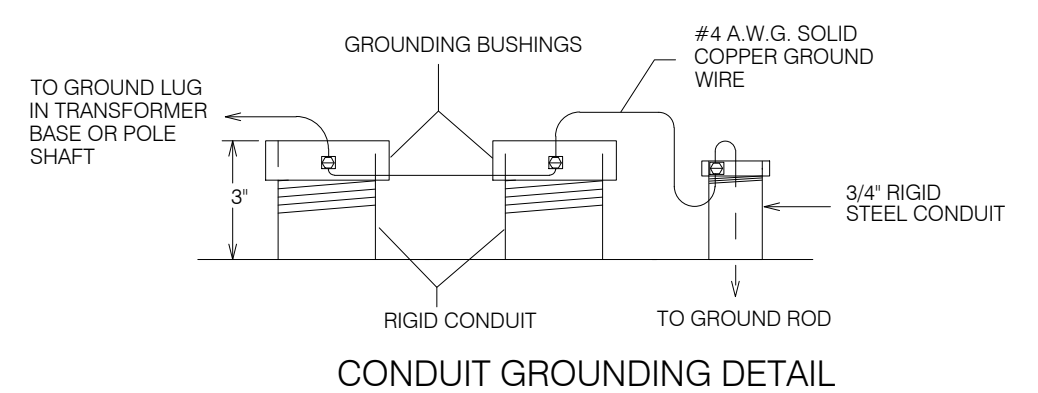
GROUNDING REQUIREMENTS:  
CONTRACTOR SHALL PROVIDE A MINIMUM OF 6 INCHES OF GROUND WIRE FOR TESTING PRIOR TO CONNECTING THE WIRE TO TRANSFORMER BASE.

POLE/TRANSFORMER BASE GROUND - GROUND WIRE SHALL COME FROM THE GROUND ROD THROUGH THE PVC CONDUIT, CONNECTING TO THE TRANSFORMER BASE/POLE AND THEN TO EACH RIGID STEEL GROUNDING BUSHING.

NOTES:  
ALL CONDUITS USED FOR THE GROUNDING, SPARES AND CONDUCTORS THAT ARE INSTALLED IN THE POLE BASE ARE INCIDENTAL TO BID ITEM 4740. THIS INCLUDES PROVIDING A MINIMUM OF 24 INCHES OF CONDUIT PAST THE EDGE OF THE POLE BASE.



POLE GROUNDING DETAIL



CONDUIT GROUNDING DETAIL

THE STANDARD SPECIFICATIONS FOR ROAD AND BRIDGE CONSTRUCTION, CURRENT EDITION, AND OTHER SPECIAL NOTES AND SPECIFICATIONS WILL APPLY ON THIS PROJECT. SEE SECTION 705, 723, AND 112 FOR MEASUREMENT AND OTHER DETAILS. SEE SECTION 602 FOR SPIRAL REINFORCEMENT SPLICING.

THE CONTRACTOR SHALL MAKE AN INSPECTION OF THE PROJECT SITE PRIOR TO SUBMITTING A BID AND SHALL BE THOROUGHLY FAMILIARIZED WITH EXISTING CONDITIONS. SUBMISSIONS OF A BID WILL BE CONSIDERED AN AFFIRMATION OF THIS INSPECTION HAVING BEEN COMPLETED.

THE CONTRACTOR SHALL BE RESPONSIBLE FOR PICKING UP INSTALL ITEMS FROM THE FRANKFORT POLE YARD AND DELIVERING THESE ITEMS TO THE SITE. THE CONTRACTOR SHALL CONTACT FRANKFORT POLE YARD PERSONNEL (502-564-3820) AND ARRANGE TO PICK UP INSTALL ITEMS A MINIMUM OF TWO (2) WORKING DAYS PRIOR TO ARRIVAL. FAILURE TO PROVIDE POLE YARD PERSONNEL THIS ADVANCE NOTICE COULD RESULT IN LONG DELAYS OR REFUSAL TO DISTRIBUTE EQUIPMENT UPON ARRIVAL.

NOTES THAT ARE IN ADDITION TO SECTION 723

INSTALL SIGNAL PEDESTAL

IN ADDITION TO THE REQUIREMENTS OF SECTION 723.04.37, THIS ITEM SHALL CONSIST OF INSTALLING SOLAR SCHOOL CROSSING FLASHER ASSEMBLY AND SIGN TO SIGNAL PEDESTAL. THE SCHOOL CROSSING FLASHER SHALL BE WIRED COMPLETE AND PROGRAMMED TO OPERATE DURING THE HOURS SCHOOL IS IN SESSION. THIS ITEM SHALL INCLUDE PROVIDING AND INSTALLING ALL REQUIRED CABLES PER MANUFACTURER RECOMMENDATIONS TO MAKE THE FLASHER OPERATIONAL. INSTALLATION OF THE S1-1 AND W16-6P SIGN SHALL ALSO INCLUDE PROVIDING AND INSTALLING A LUMINAIRE POLE ALUMINUM CAP PER THE REQUIREMENTS IN THE SOLAR SCHOOL CROSSING FLASHER DETAIL. THE CONTRACTOR SHALL ALSO PICK UP THE POLES, SOLAR SCHOOL CROSSING FLASHER EQUIPMENT AND ACCESSORIES WHEN READY TO INSTALL. THE CONTRACTOR SHALL BE RESPONSIBLE TO PROVIDE ADEQUATE PROTECTION FOR THE FINISH OF THE POLES.

THIS ITEM SHALL ALSO INCLUDE INSTALLATION OF SIGNAL PEDESTAL FOUNDATION PER THE REQUIREMENTS OF SECTION 723.03.02, 723.04.10, AND THE SOLAR SCHOOL CROSSING FLASHER DETAIL.

PAYMENT SHALL BE AT THE CONTRACT UNIT BID PRICE PER EACH AND INCLUDE FOUNDATION PER THE SPECIFICATIONS ABOVE.

CONSTRUCTION AND MEASUREMENT NOTES THAT ARE CONTRARY TO SECTION 723

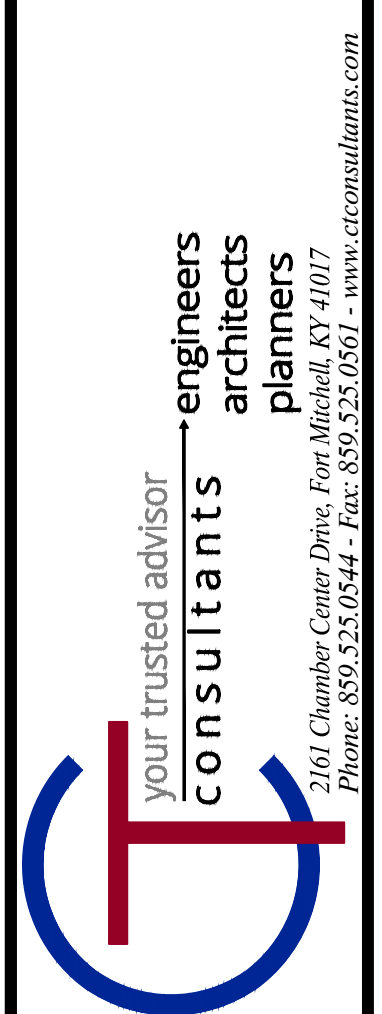
SUBSECTION: 04.22 REMOVE SIGNAL EQUIPMENT. (PERMIT ONLY)  
REVISION: REPLACE ENTIRE NOTE WITH THE FOLLOWING:

THE DEPARTMENT WILL MEASURE THE QUANTITY AS A LUMP SUM REMOVAL OF SIGNAL EQUIPMENT. THE DEPARTMENT WILL NOT MEASURE THE DISPOSAL BY THE CONTRACTOR OF MATERIALS REMOVED FROM THE PROJECT IN ACCORDANCE WITH CABINET POLICY. THE CONTRACTOR SHALL TAKE ALL STEEL AND ALUMINUM POLES TO THE EQUIPMENT WAREHOUSE IN FRANKFORT, KENTUCKY. ALL OTHER MATERIALS (WITH EXCEPTION OF PLASTIC ITEMS AND WOOD POLES) SHALL BE TAKEN TO LOCATIONS IDENTIFIED BY THE DISTRICT TRAFFIC ENGINEER. THE CONTRACTOR SHALL CONTACT THE DIVISION OF EQUIPMENT (502-564-3916) TO SCHEDULE A TIME TO DELIVER STEEL AND ALUMINUM POLES TO THE EQUIPMENT WAREHOUSE. THE DEPARTMENT WILL NOT MEASURE THE TRANSPORTATION OF THE MATERIALS AND WILL CONSIDER THEM INCIDENTAL TO THIS ITEM OF WORK.

TRAFFIC SIGNAL ESTIMATE OF QUANTITIES

| ITEM CODE | ITEM                    | UNIT  | TOTAL |
|-----------|-------------------------|-------|-------|
| 2562      | SIGNS                   | SQ FT | 11    |
| 2322EC    | INSTALL SIGNAL PEDESTAL | EACH  | 1     |
| 4950      | REMOVE SIGNAL EQUIPMENT | EACH  | 1     |
|           |                         |       |       |
|           |                         |       |       |

ALL OF THE ITEMS ON THIS DETAIL INCLUDING REMOVAL OF EXISTING POLE/SIGNAL, INSTALLATION OF NEW BASE AND POLE, WIRING, SIGNAL AND SIGNAGE SHALL BE INCLUDED IN THE LUMP SUM UNIT PRICE FOR "INSTALL NEW SCHOOL FLASHER POLE."



© 2019 CT CONSULTANTS

SCALE

DETAIL SHEET 3

FORWAKING TITLE

PROJECT TITLE

NO.

DATE

BY

DESCRIPTION

REVISIONS

SCALE

DATE

DRAWN BY

PROJECT MGR

PROJECT NO.

FLAT FILE

DRAWING No.

N.T.S.

02/07/19

RSEI

MHEL

150595

KY-A9

DTL3

SHEET 4 OF 13

MADISON PIKE SIDEWALK PHASE 5 CITY OF INDEPENDENCE, KY

your trusted advisor engineers architects planners consultants  
2161 Chamber Center Drive, Fort Mitchell, KY 41017  
Phone: 859.525.0544 - Fax: 859.525.0561 - www.ctconsultants.com