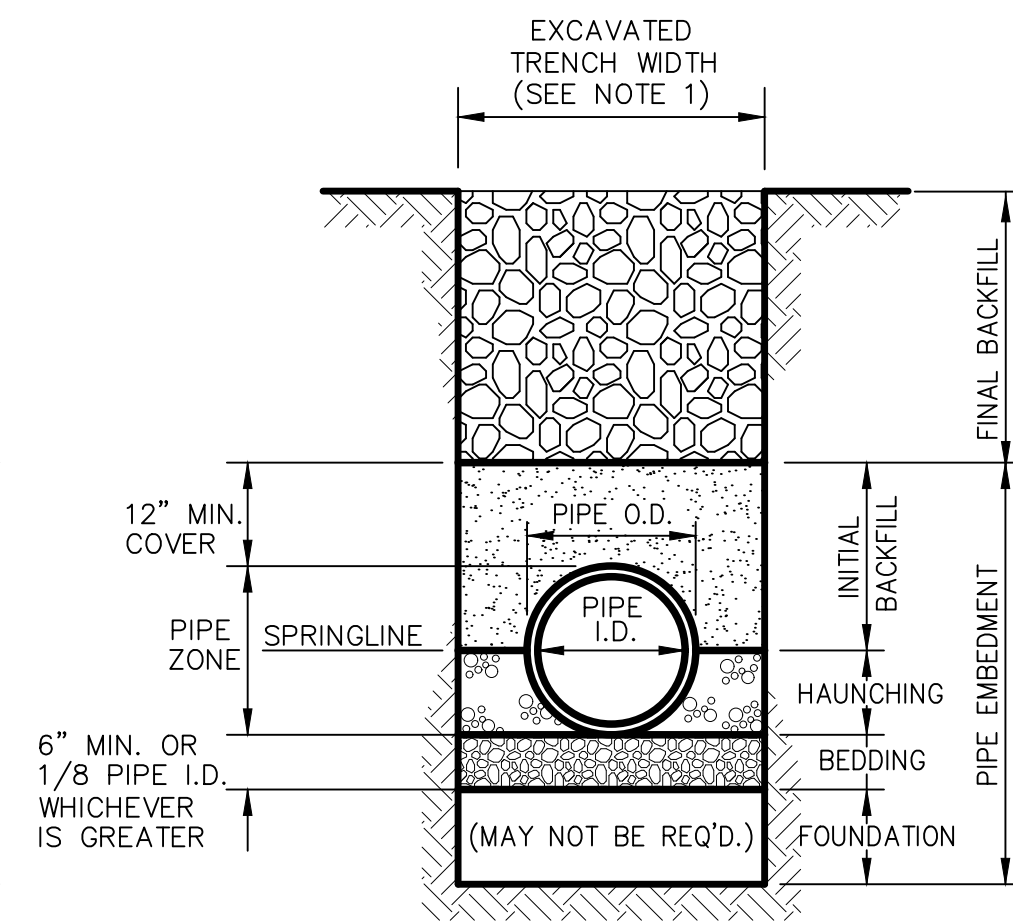
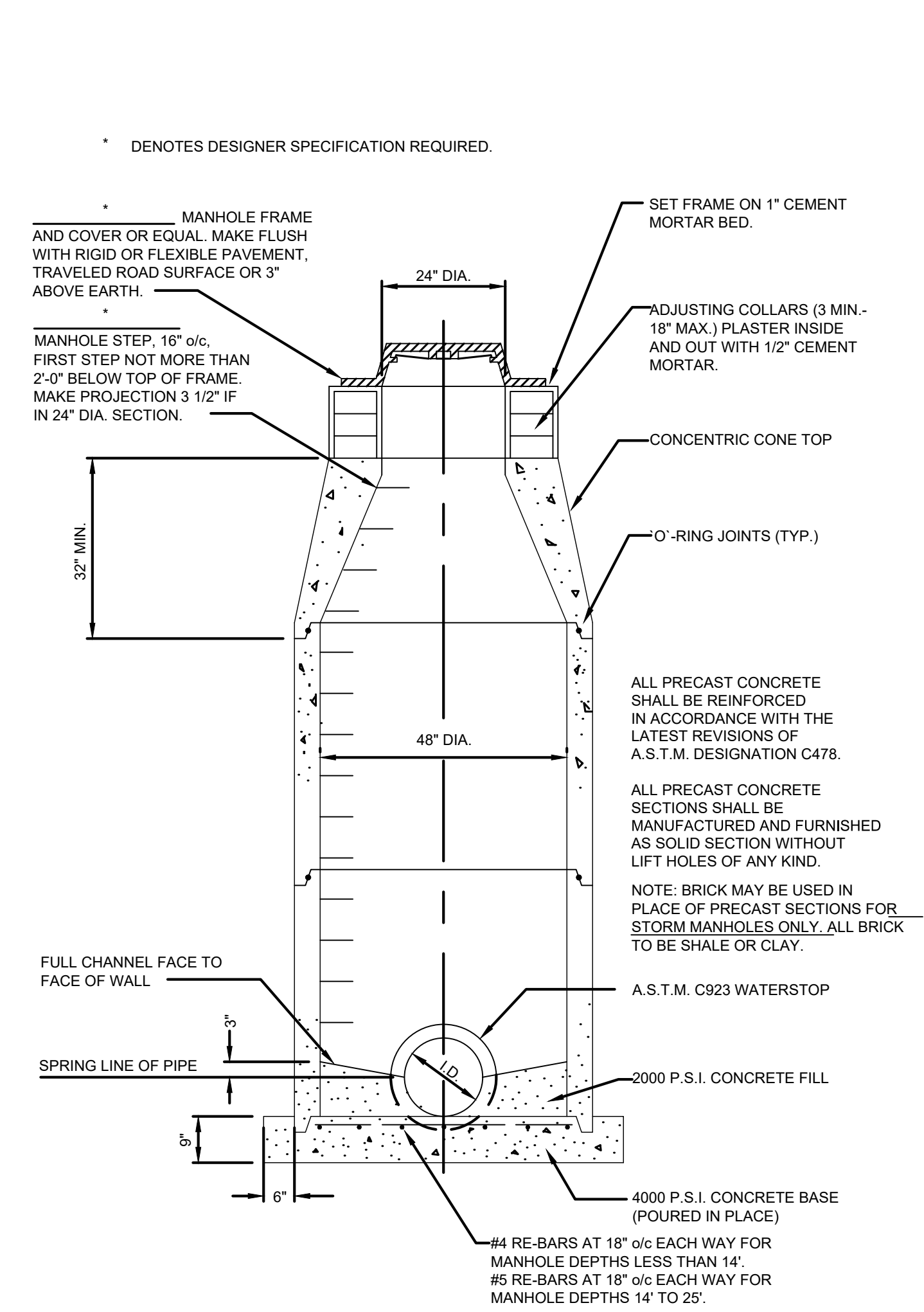
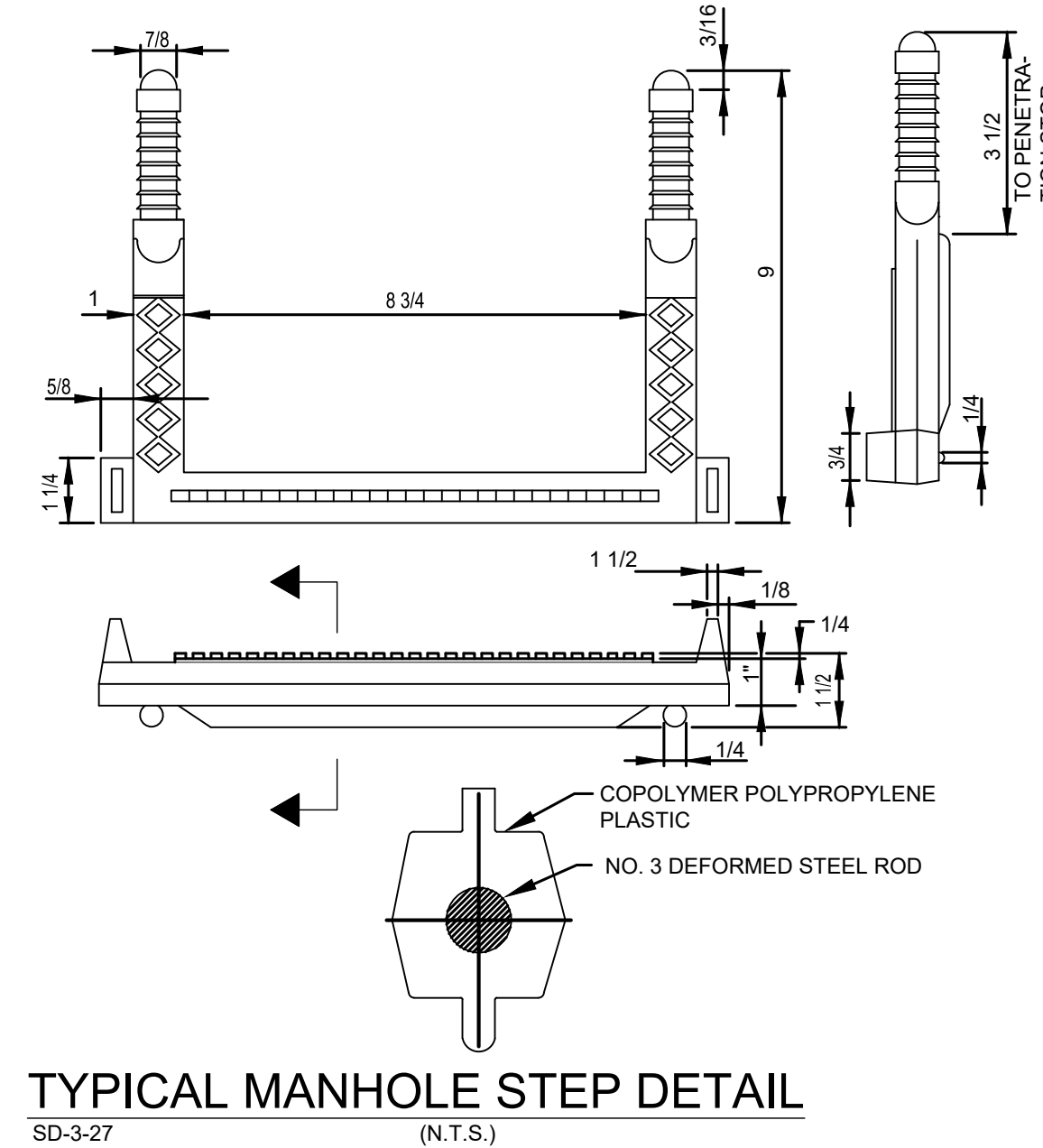
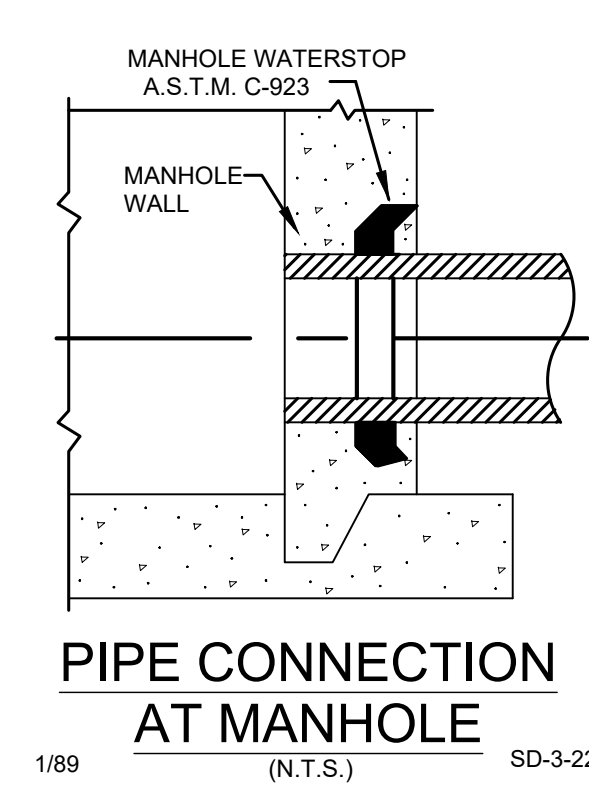


CLASS 'A' PIPE EMBEDMENT



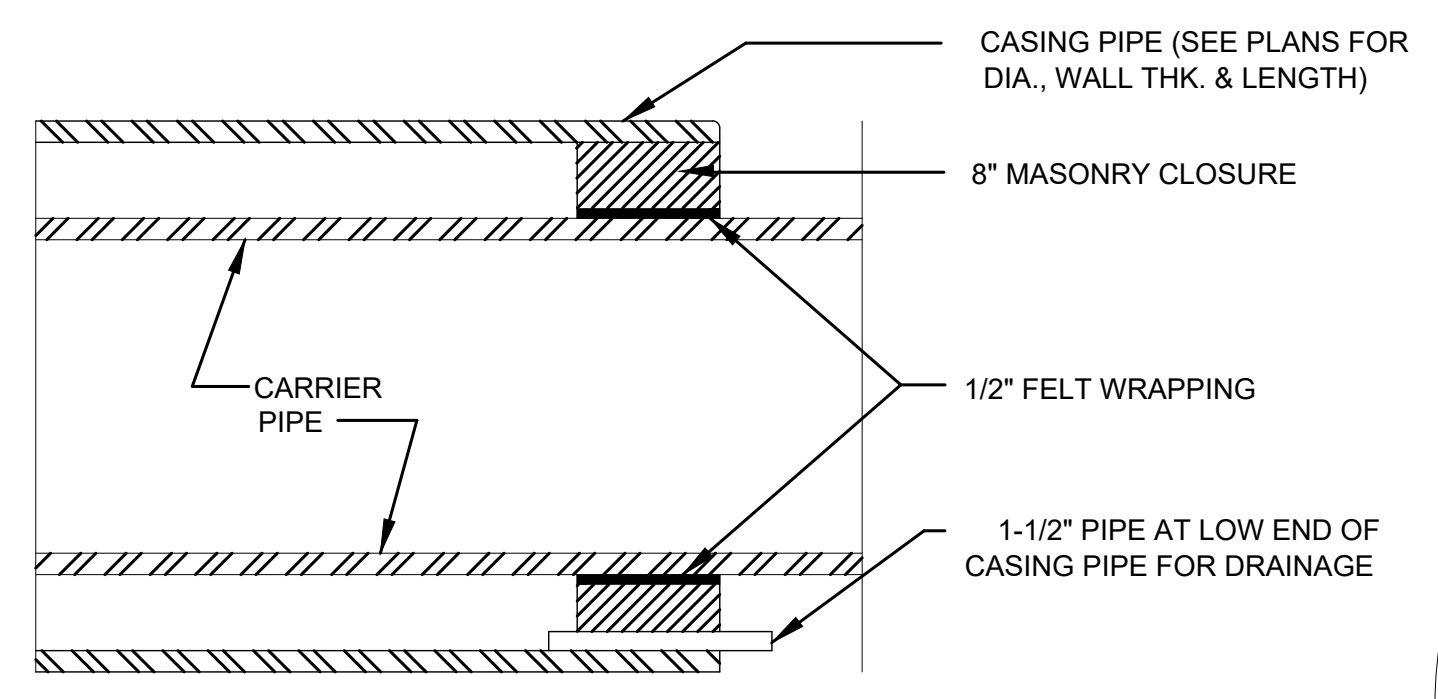
CLASS 'B' PIPE EMBEDMENT



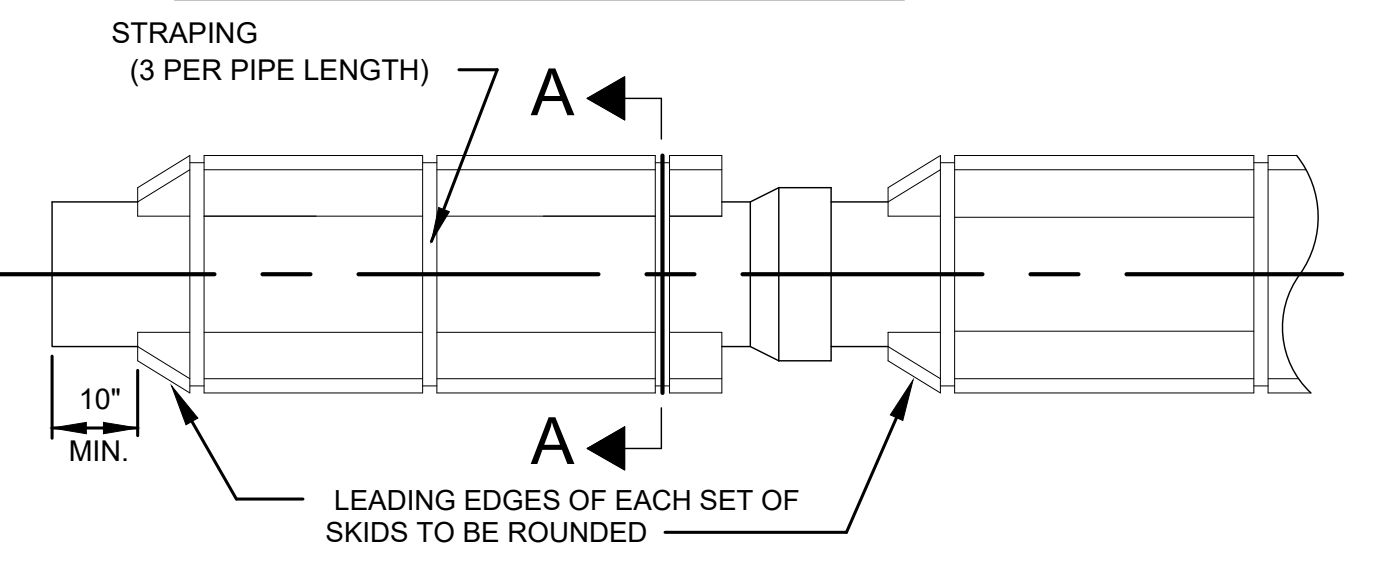
STANDARD TYPE "A" CONCENTRIC MANHOLE (24" I.D. OR LESS) SD-3-1

- NOTES:**
1. MAXIMUM EXCAVATED TRENCH WIDTH: THE MAXIMUM EXCAVATED TRENCH WIDTH FROM THE BOTTOM OF THE TRENCH TO 12" OVER THE TOP OF THE PIPE (WITHIN PIPE EMBEDMENT) SHALL BE O.D. + 24" FOR ALL PIPES UP TO AND INCLUDING 24" I.D. + 30" FOR PIPE FROM 24" I.D. TO 54" I.D. AND O.D. + 48" FOR PIPES SIZES 60" I.D. AND OVER.
 2. FOUNDATION: WHERE AN UNSTABLE TRENCH BOTTOM CONDITION IS ENCOUNTERED, THE CONTRACTOR SHALL EXCAVATE TO A DEPTH REQUIRED BY THE ENGINEER AND REPLACE WITH MATERIAL AS DIRECTED BY THE ENGINEER.
 3. PIPE EMBEDMENT:
 CLASS A: CLASS A PIPE EMBEDMENT SHALL BE USED FOR ALL PIPING UNDER PAVEMENT OR STRUCTURES WITH LESS THAN 12 INCHES OF PIPE COVER TO THE SUBGRADE. THE CONCRETE CRADLE SHALL BE IN ACCORDANCE WITH ODOT ITEM 499, CLASS "C". THE INITIAL BACKFILL SHALL BE AASHTO NO. 57 OR NO. 67 GRANULAR PIPE EMBEDMENT.
 CLASS B: CLASS B PIPE EMBEDMENT SHALL BE USED FOR ALL PIPING UNLESS OTHERWISE NOTED ON THE PLANS OR AUTHORIZED BY THE ENGINEER. THE BEDDING AND HAUNCHING SHALL BE AASHTO NO. 57 OR NO. 67 GRANULAR PIPE EMBEDMENT. IN ALL AREAS UNDER PAVEMENT, STRUCTURES OR WITHIN THE ZONE OF INFLUENCE, THE INITIAL BACKFILL SHALL BE AASHTO NO. 57 OR NO. 67 STONE GRANULAR PIPE EMBEDMENT. IN ALL AREAS OUTSIDE OF PAVEMENT, STRUCTURES OR THE ZONE OF INFLUENCE, THE INITIAL BACKFILL SHALL BE SUITABLE ON-SITE MATERIAL APPROVED BY THE ENGINEER FOR ONLY REINFORCED CONCRETE PIPE AND DUCTILE IRON PIPE. THE INITIAL BACKFILL FOR ALL OTHER PIPES SHALL BE AASHTO NO. 57 OR NO. 67 GRANULAR PIPE EMBEDMENT.
 4. FINAL BACKFILL: IN ALL AREAS UNDER PAVEMENT, STRUCTURES OR WITHIN THE ZONE OF INFLUENCE THE FINAL BACKFILL SHALL BE SPECIAL BACKFILL MATERIAL. IN ALL AREAS OUTSIDE OF PAVEMENT, STRUCTURES OR THE ZONE OF INFLUENCE, THE FINAL BACKFILL SHALL BE SUITABLE ON-SITE MATERIAL APPROVED BY THE ENGINEER.
 5. SPECIFICATIONS: ALL TRENCHING, PIPE EMBEDMENT AND BACKFILL MATERIALS SHALL BE IN ACCORDANCE WITH EARTHWORK SPECIFICATION.
 6. DETECTOR TAPE: IF REQUIRED IN THE SPECIFICATIONS, INSTALL DETECTABLE WARNING TAPE ABOVE UTILITIES, 12" BELOW FINISHED GRADE, EXCEPT 6 INCHES BELOW SUBGRADE UNDER PAVEMENT AND SLABS.

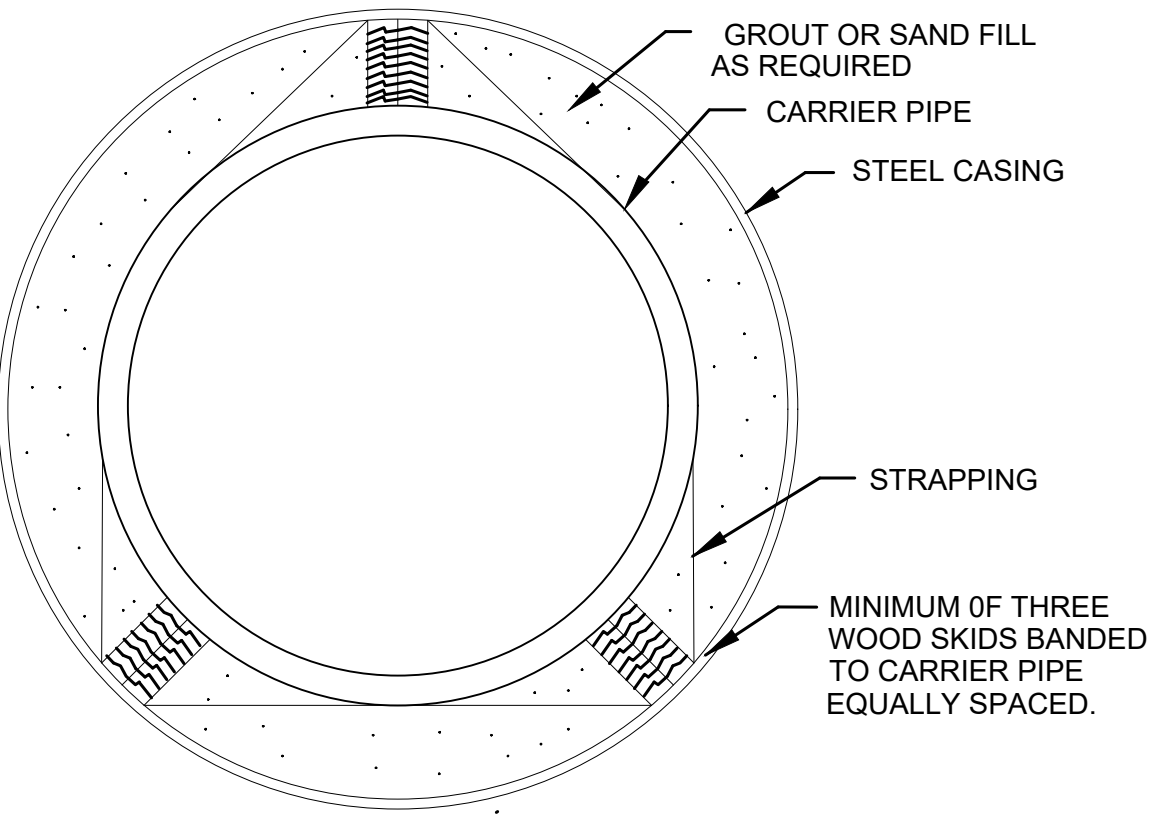
TRENCHING, EMBEDMENT AND BACKFILL DETAIL 6/04 NO SCALE SD-1-1



CASING PIPE CLOSURE DETAIL



PIPE SKID DETAIL BORING DETAIL 1/89 SD-2-6



SECTION "A-A" BORING DETAIL 1/89 SD-2-7

CARRIER PIPE		STEEL CASING PIPE		
DIA.	DIA.	THICK.	GRADE	TYPE OF FILL
18"	24"	3/8" OR GREATER	--	SAND



NO	REVISION	DATE

CITY OF BARBERTON
PACKAGE PLANT ELIMINATION
PHASE 3 - BRENTWOOD
 CITY OF BARBERTON, COUNTY OF SUMMIT, OHIO

SCALE: AS SHOWN
 DATE: 4/10/18
 DESIGNED BY: EMF
 DRAWN BY: BEK
 CHECKED BY: EMF

MISCELLANEOUS DETAILS

PROJECT NO:	
170804	
DRAWING NAME	
D-1	
SHEET	OF
13	17