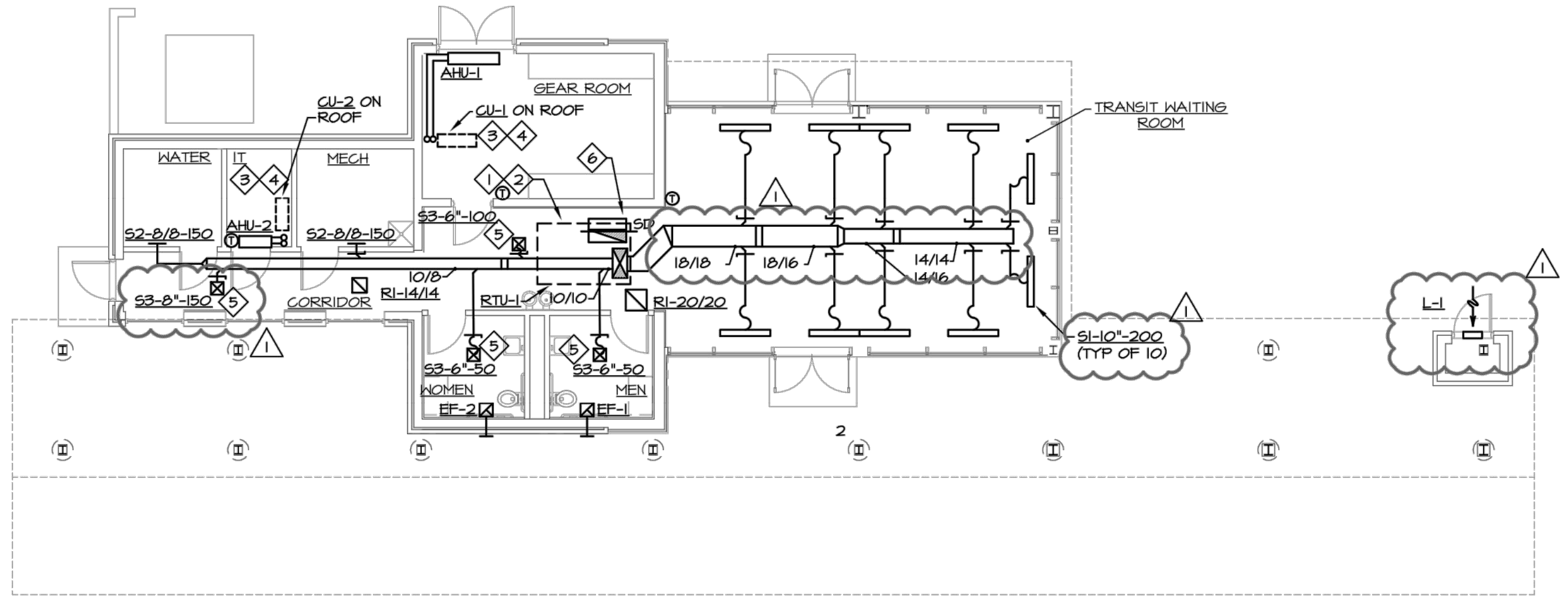


DATE	REVISION	NO	CD	ISSUED FOR	ISSUE DATE	SCALE	DESIGNED BY	DRAWN BY	CHECKED BY
08/05/19			05/31/19	AS SHOWN	05/31/19	AS SHOWN	DJH	DJH	JDM

LAKELAND TRANSFER STATION
LAKELAND COMMUNITY COLLEGE
 7700 CLOCKTOWER DR., KIRTLAND, OH 44094

MECHANICAL PLAN

PROJECT NO.	18050002
DISCIPLINE	MECHANICAL
SHEET NAME	M-1
SHEET	46
OF	55



PLAN NOTES

1. MAINTAIN HVAC UNIT 10'-0" FROM EDGE OF ROOF BOTH SIDES. MAINTAIN MANUFACTURER'S RECOMMENDED CLEARANCES ON ALL SIDES.
2. COORDINATE ROOFTOP UNIT LOCATION WITH ROOF DRAINS.
3. ROUTE 3/4 INCH PVC CONDENSATE DRAIN FROM EVAPORATOR DRAIN PAN WITH TRAP TO EXTERIOR SPLASH BLOCK ON GRADE.
4. ROUTE PIPES UP THRU ROOF WITH PATE PIPE CURB, SIZE PER MANUFACTURER'S RECOMMENDATION
5. BALANCE AIRFLOW TO DIFFUSER WITH DAMPER IN DIFFUSER.
6. RA DUCT FULL-SIZE LINED

MECHANICAL PLAN
 SCALE: 1/8" = 1'-0"

ROOFTOP HEATING/COOLING UNIT SCHEDULE																					
MARK	MANUFACTURER	MODEL	NOMINAL TONS	FAN					COOLING				HEATING			ELECTRICAL			OPERATING WEIGHT (pounds)	REMARKS	
				TOTAL CFM	OA CFM	ESP (Inches)	RPM	MOTOR HP	TOTAL MBH	SENSIBLE MBH	EDB (degrees F)	EWB (degrees F)	AIR ON CONDENSER (degrees F)	KW	EAT (degrees F)	STAGES	VOLTAGE	MCA			MOCF
RTU-1	DAIKIN	MPSA07	7	2650	750	1.0	766	3	88.8	60.7	75.4	62.6	45	20	67	SCR	460V/3PH	27	30	444	1 THRU 13

REMARKS:
 1. NON-FUSED DISCONNECT SWITCH.
 2. 14 INCH HIGH ROOF CURB BY ROOFTOP UNIT MANUFACTURER. MOUNT CURB LEVEL ON BLEED-ROOF.
 3. 2 INCH MERV 8 DISPOSABLE FILTER.
 4. OVERSIZED SUPPLY FAN MOTOR.
 5. OPEN DRIP PROOF MOTOR.
 6. STAINLESS STEEL HEAT EXCHANGER.
 7. DUCT SMOKE DETECTOR (FIELD INSTALLED) FURNISHED BY E.C. MOUNTED BY M.C., WIRED FOR SHUT-DOWN BY E.C.
 8. FIVE YEAR COMPRESSOR WARRANTY.
 9. TEN YEAR HEAT EXCHANGER WARRANTY.
 10. POWDER COAT GALVANIZED STEEL EXTERIOR.
 11. SINGLE WALL CONSTRUCTION, INSULATED WALLS, PRE-PAINTED GALVANIZED STEEL EXTERIOR.
 12. ECONOMIZER WITH POWER EXHAUST (FIELD INSTALLED)
 13. HIGH COOLING EFFICIENCY.
 14. ELECTRIC HEATER KIT - 20KW, 480V/3

LOUVER SCHEDULE						
MARK	MANUFACTURER	MODEL	FREE AREA	SIZE (WIDTH X HEIGHT)	FINISH	REMARKS
L-1	RUSKIN	ELF3T5DX	1.40	18"X24"	BY ARCHITECT	1

REMARKS:
 1. LOUVER TO BE CENTER LOCATED, NEAR BOTTOM OF DOOR.

SPLIT SYSTEM HEATING/COOLING UNIT SCHEDULE																
MARK	MANUFACTURER	MODEL	TOTAL CFM	MOTOR (WATTS)	INDOOR UNIT				OUTDOOR UNIT		MODEL	VOLTAGE	MCA	MOCF	AIR ON CONDENSER (degrees F)	REMARKS
					TOTAL MBH	SENSIBLE MBH	EAT DB (degrees F)	EAT WB (degrees F)	HEATING AT 47 F (MBH)	HEATING AT 17 F (MBH)						
AHU-1/CU-1	MITSUBISHI	PKA	500	56	24	22	75.4	62.7	26	18	FUZ	208/1	18	20	45	1-3
AHU-2/CU-2	MITSUBISHI	PKA	400	30	11.9	10	75.4	62.7	14	9.2	FUZ	208/1	11	20	45	1-3

REMARKS:
 1. DISCONNECT KIT
 2. MOUNT ON EQUIPMENT RAILS
 3. PROVIDE HEATING TO -20F

FAN SCHEDULE												
MARK	MANUFACTURER	MODEL	TYPE	CFM	ESP	MOTOR HP	MAXIMUM RPM	DRIVE	VOLTAGE	SONES	WEIGHT	REMARKS
EF-1	COOK	6C14B	CEILING FAN	100	0.25	44W	1075	D	120V/1PH	3	12 LBS.	1 THRU 5
EF-2	COOK	6C14B	CEILING FAN	100	0.25	44W	1075	D	120V/1PH	3	12 LBS.	1 THRU 5

REMARKS:
 1. INCLUDE SPEED CONTROL.
 2. DISCONNECT.
 3. VIBRATION ISOLATION.
 4. BACKDRAFT DAMPER.
 5. 8X8 BRICK VENT
 6. CONTROL THROUGH LIGHT SWITCH

REGISTERS, GRILLES, AND DIFFUSERS SCHEDULE									
MARK	MANUFACTURER	MODEL	DESCRIPTION	MATERIAL	FINISH	FRAME TYPE	NECK SIZE	MAX. NG	REMARKS
S1	TITUS	ML-34	LINEAR SLOT SUPPLY DIFFUSER	STEEL	CHOSEN BY ARCH.	DRYWALL	10"	30	1
S2	TITUS	300FS	SIDEWALL SUPPLY DIFFUSER	STEEL	CHOSEN BY ARCH.	SURFACE MOUNTED	8/8	30	-
S3	TITUS	OMNI	CEILING DIFFUSER	STEEL	CHOSEN BY ARCH.	SURFACE MOUNTED OR LAY-IN	REFER TO PLAN	30	2
RI	TITUS	50F	RETURN GRILLE	STEEL	CHOSEN BY ARCH.	DRYWALL	-	30	-

NOTE:
 1. S1 SHALL BE 1 INCH 4 SLOT, 2-WAY THROW
 2. INCLUDE BALANCING DAMPER IN DIFFUSER

