

CITY OF INDEPENDENCE OFFICIALS

MAYOR
CHRIS REINERSMAN

CITY ADMINISTRATIVE OFFICER
CHRIS MORICONI

CITY CLERK
GINA GABBARD

CITY COUNCIL MEMBERS
BILL ASEERE
TOM BRINKER
LUCAS DEATON
AMY ENGELMAN
CAROL FRANZEN
GREG WAITE

CITY ATTORNEY
JACK GATLIN

PUBLIC WORKS DIRECTOR
KEN HICKS

LEGEND

EXISTING POWER POLE

EXISTING LIGHT POLE

EXISTING GUY ANCHOR

EXISTING MAILBOX

EXISTING WATER VALVE/METER

EXISTING FIRE HYDRANT

EXISTING SIGN

EXISTING GAS VALVE / BOX

EXISTING TREE OR SHRUB OR LANDSCAPING

EXISTING TREE TO BE REMOVED

EXISTING ELEC., TELE., AND CABLE BOX

EXISTING STORM (CATCHBASIN - MANHOLE)

EXISTING SANITARY MANHOLE

EXISTING GAS MAIN

EXISTING WATER MAIN

EXISTING UNDERGROUND ELECTRIC

EXISTING UNDERGROUND TELEPHONE

EXISTING UG ELECTRIC, TELE. & CABLE

EXISTING UNDERGROUND CABLE

EXISTING STORM SEWER

EXISTING SANITARY SEWER

EXISTING PROPERTY LINE/R-O-W

PROPOSED UNDERDRAIN

PROPOSED CURB INLET

HATCH LEGEND

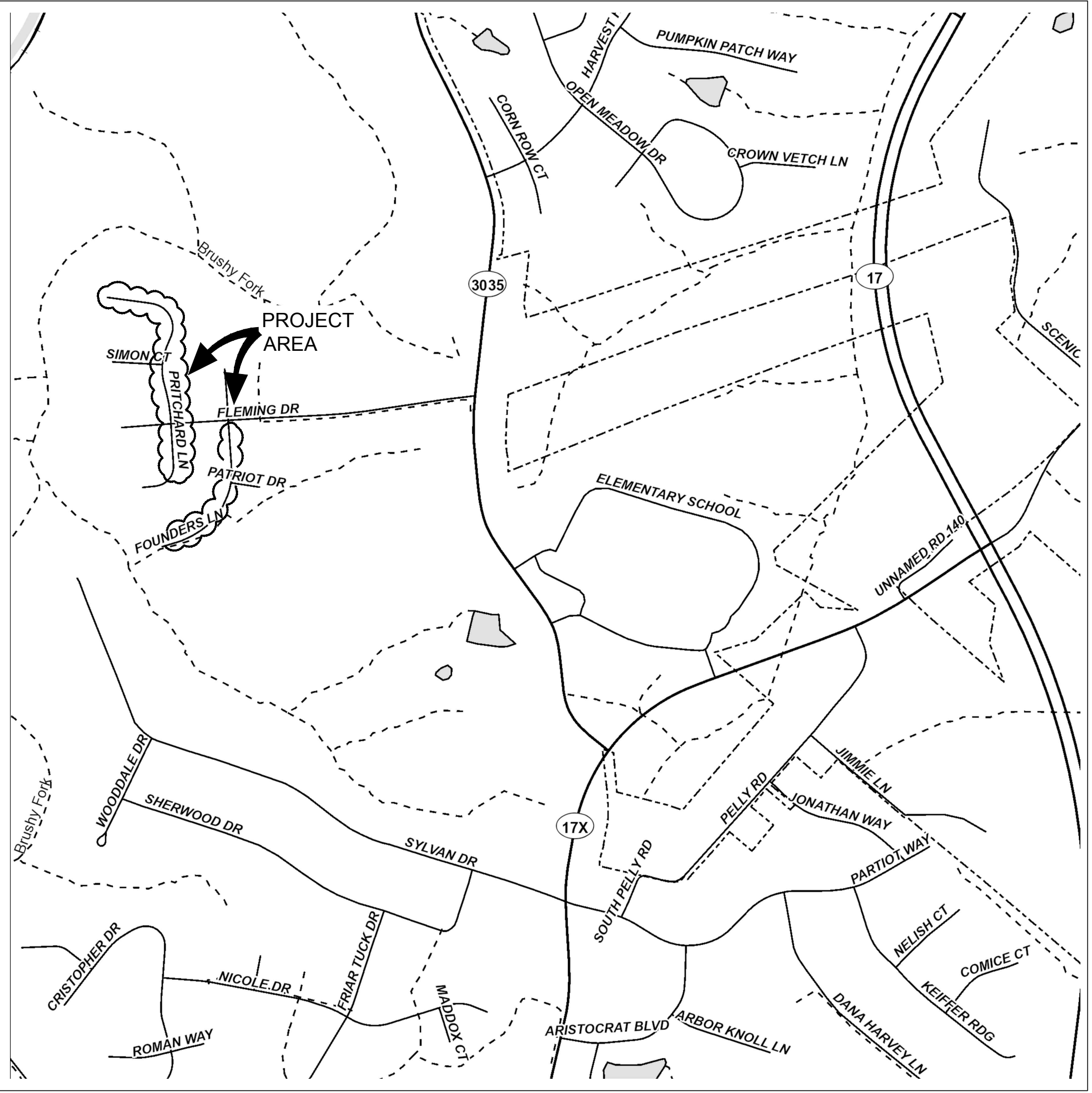
6" CONCRETE DRIVEWAY APRON REMOVAL AND REPLACEMENT (SEE DETAIL ON SHEET 2)

PROPOSED ROADWAY REPLACEMENT

4" CONCRETE WALK REMOVAL AND REPLACEMENT (SEE DETAIL ON SHEET 2)

FULL DEPTH ASPHALT JOINT (SEE DETAIL ON SHEET 2)

CITY OF INDEPENDENCE
KENTON COUNTY, KENTUCKY
2019 STREET PROGRAM
(PRITCHARD LANE & FOUNDERS LANE)
190308



VICINITY MAP
NTS

SANITATION DISTRICT #1 SPECIFICATIONS

THE LATEST STANDARD SPECIFICATIONS OF THE NORTHERN KENTUCKY REGIONAL STORM WATER MANAGEMENT PROGRAM RULES AND REGULATIONS, AND OF THE SANITATION DISTRICT NO. 1 SANITARY RULES AND REGULATIONS, INCLUDING CHANGES AND SUPPLEMENTAL SPECIFICATIONS THERETO SHALL GOVERN THIS IMPROVEMENT.

K.T.C SPECIFICATIONS

THE LATEST STANDARD SPECIFICATIONS OF THE KENTUCKY TRANSPORTATION CABINET, INCLUDING CHANGES AND SUPPLEMENTAL SPECIFICATIONS THERETO, GOVERN THIS IMPROVEMENT.

SOURCE OF BOUNDARY INFORMATION

THE BOUNDARY INFORMATION SHOWN ON THESE PLANS IS BASED UPON NORTHERN KENTUCKY AREA PLANNING COMMISSION G.I.S. MAPPING AND DOES NOT REPRESENT AN ACTUAL FIELD BOUNDARY SURVEY BY CT CONSULTANTS, INC.

SOURCE OF TOPOGRAPHIC INFORMATION

TOPOGRAPHIC INFORMATION SHOWN ON THESE PLANS IS BASED ON A COMBINATION OF FIELD SURVEY INTEGRATED WITH NKAPC G.I.S MAPPING.

ROADWAY CONSTRUCTION

GENERAL NOTES

1. THE CONTRACTOR SHALL MAINTAIN TRAFFIC AND ACCESS TO THE PROPERTIES DURING THE PROPOSED PAVEMENT CONSTRUCTION.
2. THE EXISTING UTILITY LOCATIONS ON THIS PLAN ARE NOT NECESSARILY ALL OF THE UTILITIES, NOR THE ACTUAL LOCATION. THE CONTRACTOR SHALL VERIFY LOCATION AND ELEVATION OF ALL EXISTING UTILITIES PRIOR TO BEGINNING OF ANY CONSTRUCTION OR EARTH MOVING OPERATIONS. THE CONTRACTOR SHALL IMMEDIATELY NOTIFY THE UTILITY OWNER AND THE CITY OF INDEPENDENCE WHEN UNDERGROUND UTILITIES ARE ENCOUNTERED DURING CONSTRUCTION THAT ARE UNKNOWN OR VARY FROM THE PLAN. CONTRACTOR TO CONTACT UTILITY PROTECTION SERVICE PRIOR TO CONSTRUCTION.
3. THE CONTRACTOR SHALL COORDINATE WITH THE CITY OF INDEPENDENCE FOR FIELD INSPECTIONS.
4. TOPS OF EXISTING AND PROPOSED CASTING ELEVATIONS ARE SUBJECT TO FINAL ADJUSTMENTS AS APPROVED BY THE ENGINEER AND REQUIREMENTS OF UTILITY OWNER. THIS WORK IS INCIDENTAL TO THE CONTRACT.
5. FORTY-EIGHT (48) HOURS BEFORE EXCAVATION IS TO COMMENCE, THE CONTRACTOR SHALL NOTIFY THE FOLLOWING AGENCIES: THE KENTUCKY UTILITY PROTECTION SERVICE AND ALL OTHER UTILITIES THAT MAY HAVE UNDERGROUND UTILITIES INVOLVING THIS PROJECT AND ARE NON-MEMBERS OF KENTUCKY UNDERGROUND PROTECTION.
6. NO CONSTRUCTION SHALL COMMENCE UNTIL ALL KENTON COUNTY AND THE CITY OF INDEPENDENCE PERMITS HAVE BEEN ISSUED AS REQUIRED.
7. THE CONTRACTOR SHALL COORDINATE ALL WORK WITHIN THE PUBLIC RIGHT OF WAY WITH THE CITY OF INDEPENDENCE. LOCAL TRAFFIC MUST BE MAINTAINED AT ALL TIMES DURING CONSTRUCTION.
8. CONTRACTOR SHALL BE REQUIRED TO MAINTAIN SANITARY SEWER AND STORM SEWER FLOW THROUGH THE PROJECT FOR THE DURATION OF CONSTRUCTION. COST SHALL BE INCIDENTAL TO THE CONTRACT.
9. COST OF CONNECTING THE PROPOSED UNDERDRAIN AND/OR DOWNSPOUT CONNECTOR LINE INTO EXISTING AND/OR PROPOSED STRUCTURES SHALL BE INCIDENTAL TO PAYMENT FOR THAT PAY ITEM.
10. ANY ADJUSTMENTS TO STORM SEWER OR SANITARY SEWER CASTINGS SHALL BE COORDINATED WITH AND MEET ALL REQUIREMENTS FOR SANITATION DISTRICT NO. 1.
11. ANY ADJUSTMENTS TO WATER METERS OR VALVES SHALL BE COORDINATED WITH AND MEET ALL REQUIREMENTS FOR N.K.W.D.
12. LIMITS OF DRIVEWAY REPLACEMENT SHOWN HEREIN ARE FOR ESTIMATING PURPOSES ONLY. PRIOR TO CONSTRUCTION, CONTRACTOR SHALL MEET WITH THE ENGINEER TO DETERMINE AND MARK THE LIMITS OF DRIVEWAY REPLACEMENT. ONLY DRIVEWAY REPLACEMENTS APPROVED BY THE ENGINEER SHALL BE PART OF THIS CONTRACT. DRIVEWAY NOT MARKED FOR REPLACEMENT THAT IS DAMAGED BY THE CONTRACTOR SHALL BE REPLACED AT HIS EXPENSE.

CONSTRUCTION MAY BEGIN AFTER JULY 8, 2019

MAINTENANCE OF TRAFFIC NOTES

THE CONTRACTOR SHALL MAINTAIN LOCAL TRAFFIC AT ALL TIMES IN ACCORDANCE WITH ITEM 112. REMOVAL AND REPLACEMENT OF THE PAVEMENT SHALL OCCUR ON ONE SIDE OF THE ROAD AT A TIME. THE CONTRACTOR SHALL ADEQUATELY MARK, THROUGH THE USE OF BARRELS, FLASHING LIGHTS, PORTABLE GATES AND/OR OTHER DEVICES APPROVED BY THE ENGINEER, THE LIMITS OF THE PROJECT AREA AND THOSE AREAS OF THE SITE WHICH ARE TEMPORARILY CLOSED TO TRAFFIC. ALL TRAFFIC CONTROL DEVICES SHALL BE IN CONFORMANCE WITH THE RECOMMENDATIONS OF THE MANUAL OF UNIFORM TRAFFIC CONTROL DEVICES (M.U.T.C.D.).

DURING THE COURSE OF THE NORMAL WORKING DAY, THE CONTRACTOR SHALL INSURE THE SAFETY OF THE PUBLIC BY PROVIDING A SUFFICIENT NUMBER OF FLAGGERS TO ASSIST THE TRAFFIC FLOW THROUGH THE CONSTRUCTION AREA. IF, AT THE COMPLETION OF THE NORMAL WORKING DAY, ANY TRENCH FOR PAVEMENT CONSTRUCTION AND/OR CONSTRUCTION OF THE PROPOSED STORM SEWER HAS NOT BEEN COMPLETELY BACKFILLED AND RESTORED, A TEMPORARY COVER, SUCH AS A METAL PLATE OR ANOTHER APPROVED DEVICE, SHALL BE PLACED OVER THAT PORTION OF THE REMAINING OPEN TRENCH.

THE CONTRACTOR SHALL NOTIFY THE SURROUNDING PROPERTIES AT LEAST 48 HOURS IN ADVANCE OF WHEN THEIR DRIVES WILL BE BLOCKED DURING CONSTRUCTION.

INDEX OF SHEETS

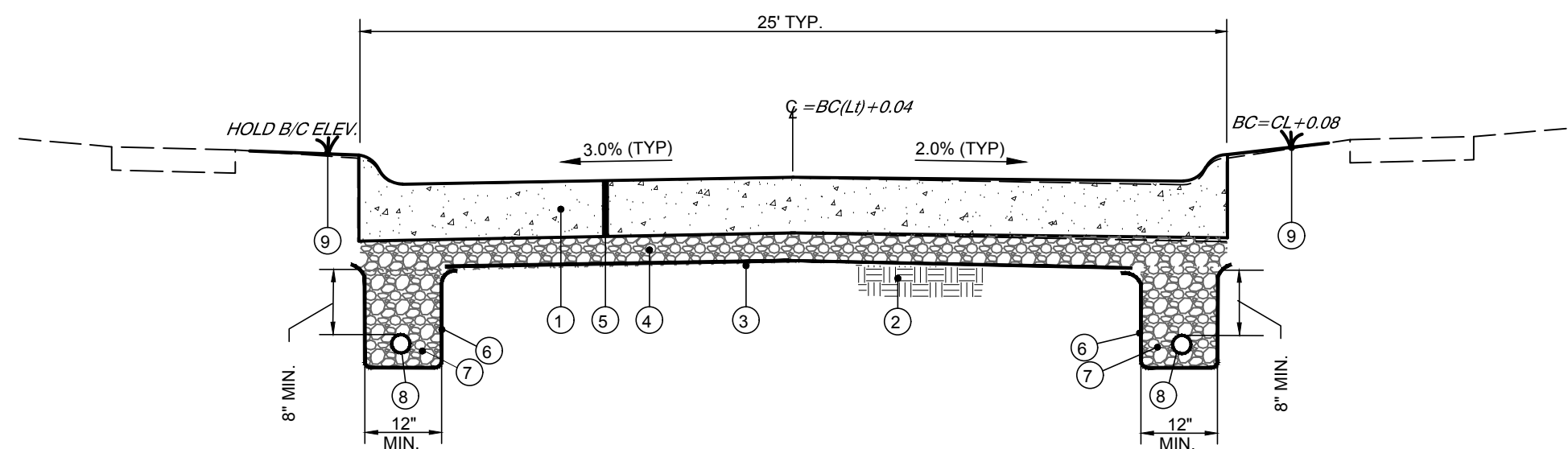
TITLE SHEET.....	1
DETAILS SHEET.....	2 - 3
PLAN SHEET.....	4 - 7

your trusted advisor

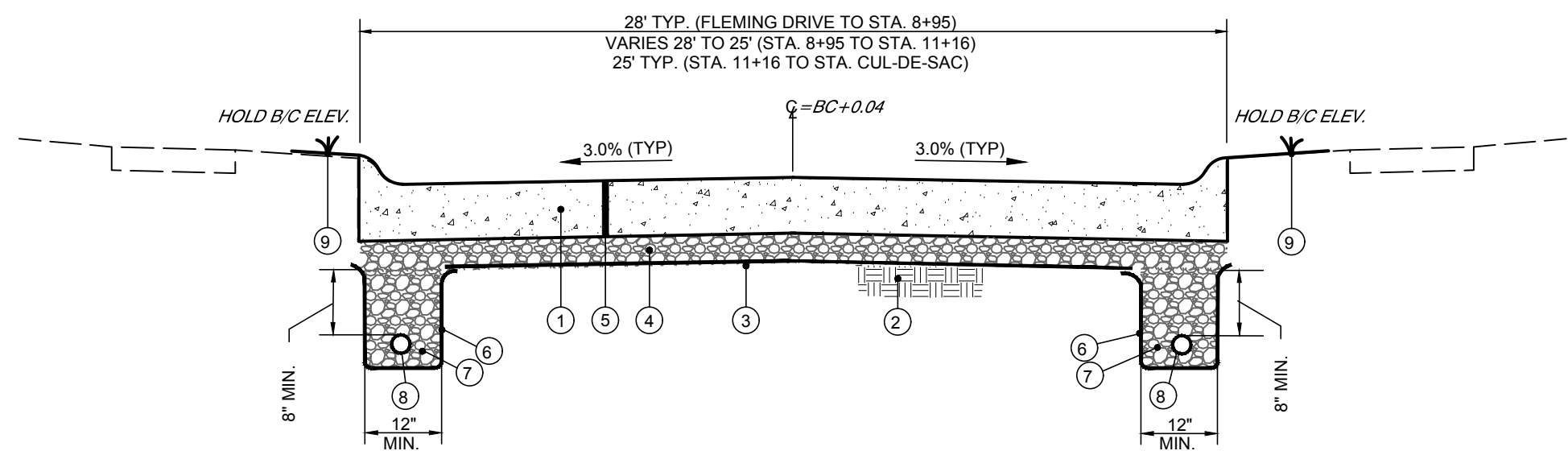
engineers
architects
planners

DATE	REVISION	NO	ISSUE FOR:	ISSUE DATE:	SCALE:	DESIGNED BY:	DRAWN BY:	CHECKED BY:
				5/31/2019	AS SHOWN	JCOR	JCOR	MHEL

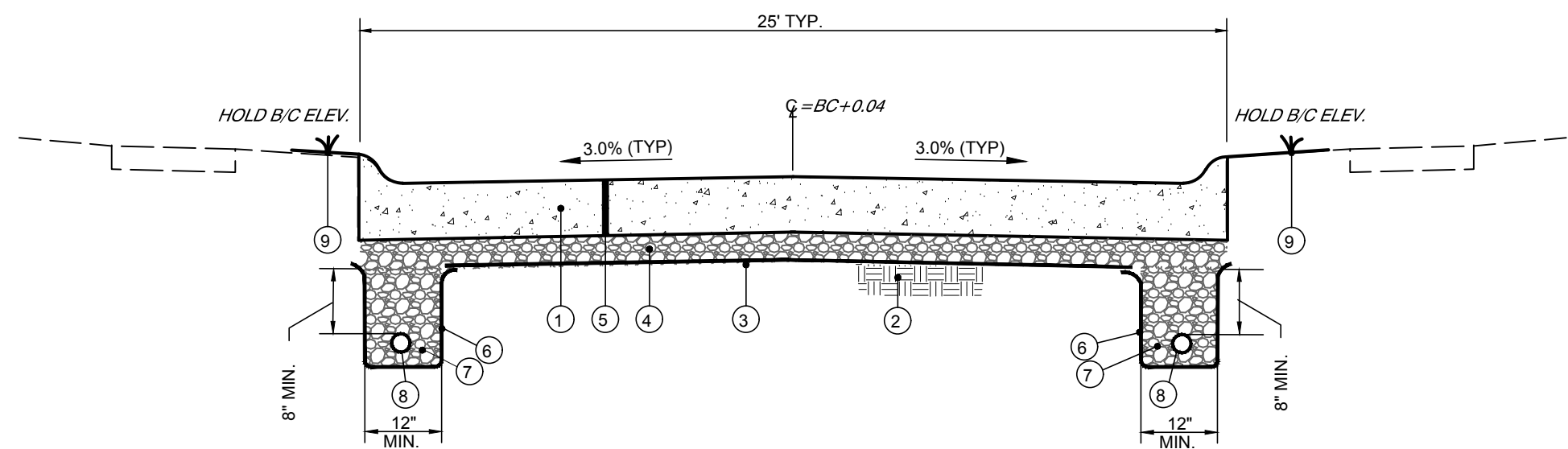
2019 STREET PROGRAM CITY OF INDEPENDENCE, KY KENTON COUNTY		TITLE SHEET	
PROJECT NO.		190308	
TTL			
SHEET	OF	1	7



CONCRETE PAVEMENT REPLACEMENT TYPICAL SECTION WITH EDGE DRAIN
PRITCHARD LANE (SOUTH) - STA. 2+22 TO FLEMING DRIVE N.T.S.

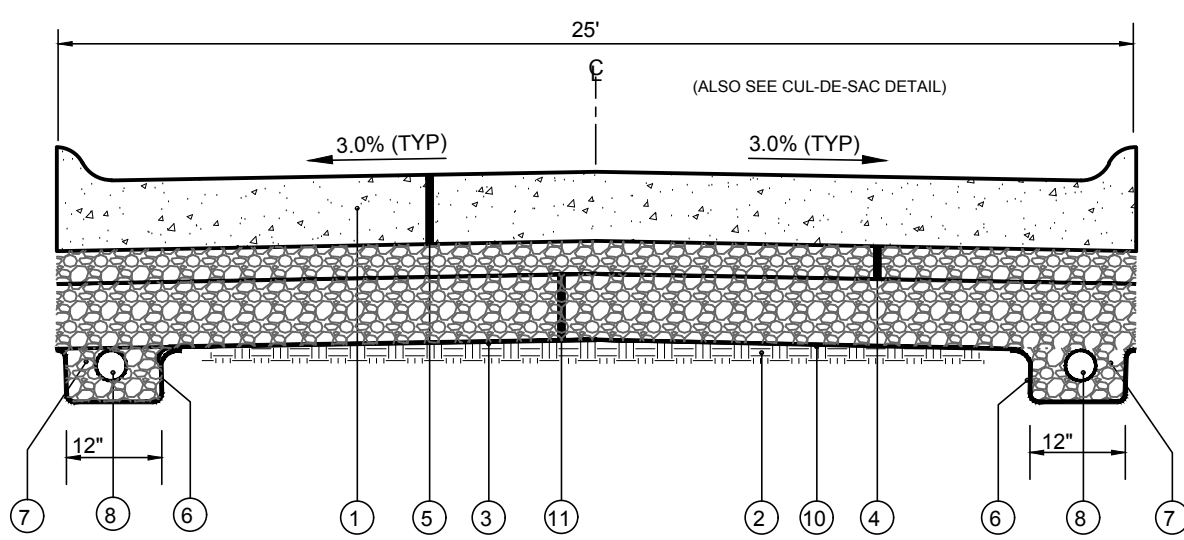


CONCRETE PAVEMENT REPLACEMENT TYPICAL SECTION WITH EDGE DRAIN
PRITCHARD LANE (NORTH) - FLEMING DRIVE TO CUL-DE-SAC N.T.S.



CONCRETE PAVEMENT REPLACEMENT TYPICAL SECTION WITH EDGE DRAIN
FOUNDERS LANE (SOUTH) - STA. 21+50 TO FLEMING DRIVE N.T.S.

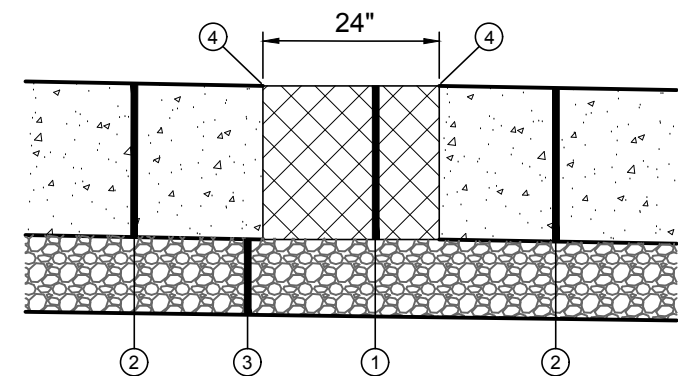
- ① ITEM 203 - REMOVE EXISTING CONCRETE PAVEMENT
- ② ITEM 207 - SUBGRADE RESHAPING & COMPACTING. SUBGRADE SHALL BE TRIMMED AND ROLLED SMOOTH FOR DRAINAGE SO GEOTEXTILE CAN BE SPREAD SMOOTH, TAUT AND EVEN BEFORE STONE IS PLACED.
- ③ ITEM 214 - WOVEN GEOTEXTILE, MIRAFI 600X OR EQUIVALENT, ALL OVERLAPS TO BE 18" MIN.
- ④ ITEM 302 - 4" CRUSHED STONE BASE (LESS THAN 7% FINES) COMPACTED TO 100%
- ⑤ ITEM SPL - 8" PORTLAND CEMENT CONCRETE PAVEMENT w/ 4" ROLLED CURB PER KENTON CO. SUBDIVISION REGULATIONS
- CONTRACTOR MAY SUBSTITUTE No. 57 CRUSHED LESTONE IN PLACE OF No. 467 AS CALLED FOR IN THE MIX
- PAVEMENT LUKS NOT REQUIRED.
- ⑥ ITEM SPL - NONWOVEN GEOTEXTILE, MIRAFI 140N OR EQUIVALENT (INCIDENTAL TO PIPE UNDERDRAIN)
- ⑦ ITEM 302 - CLEAN NO. 57 CRUSHED STONE (LESS THAN 3% FINES) (INCIDENTAL TO PIPE UNDERDRAIN)
- ⑧ ITEM 704 - 4" RIGID PVC PERFORATED PIPE UNDERDRAIN
- ⑨ ITEM SPL - YARD RESTORATION (4" TOPSOIL, SEED AND MULCH)
- ⑩ ITEM SPL ** GEGRID (TENSAR TX 5 OR EQUIVALENT), PLACE ON TOP OF WOVEN GEOTEXTILE
- ⑪ ITEM 302/SPL ** VARIABLE THICKNESS (4" - 8") CRUSHED STONE BASE, (LESS THAN 7% FINES) FOR SUBGRADE REPAIR



GEOGRID REINFORCEMENT AND GRAVEL BASE FOR SUBGRADE REPAIR
CONTINGENCY ITEMS TO BE USED ONLY AS DIRECTED BY THE ENGINEER N.T.S.

* SUBGRADE RESHAPING AND COMPACTING SHALL BE PER KTC ITEM 207. A PROOF ROLL WILL BE REQUIRED PRIOR TO PLACING STONE BASE OR CONCRETE PAVEMENT. SOFT OR YIELDING SUITABLE SUBGRADE MATERIAL LACKING PROPER COMPACTION OR MOISTURE CONTENT SHALL BE SCARIFIED, AERATED, DRIED AND RECOMPACTED. THE COST FOR THE ABOVE SHALL BE INCLUDED IN THE UNIT PRICE BID FOR "SUBGRADE RESHAPING AND COMPACTING". SOFT OR YIELDING UNSUITABLE SUBGRADE SHALL BE REMOVED AND REPLACED PER THE "GEOGRID REINFORCEMENT AND GRAVEL BASE FOR SUBGRADE REPAIR" DETAIL, AS DIRECTED BY THE ENGINEER.

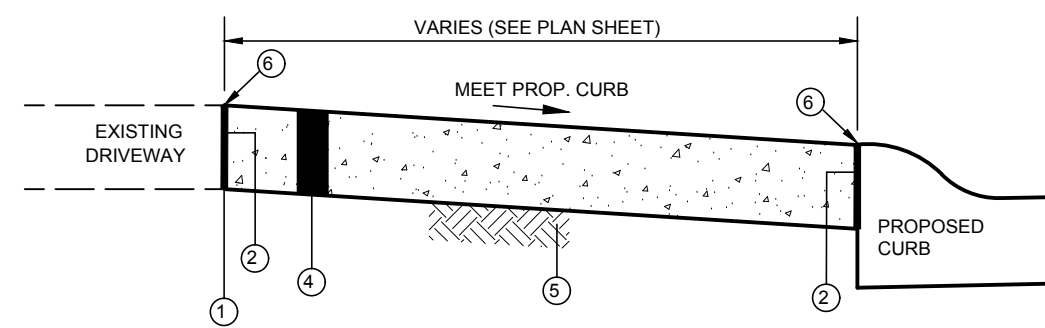
** CONTINGENCY ITEM TO BE USED ONLY AS DIRECTED BY THE ENGINEER.



- ① ITEM 402/403 - 8" ASPHALT CONCRETE BASE
- ② ITEM SPL - 8" PORTLAND CEMENT CONCRETE PAVEMENT
- ③ ITEM 302 - 4" CRUSHED STONE BASE
- ④ SEAL JOINT

ASPHALT PAVEMENT JOINT
- SEE PLAN FOR LOCATIONS -

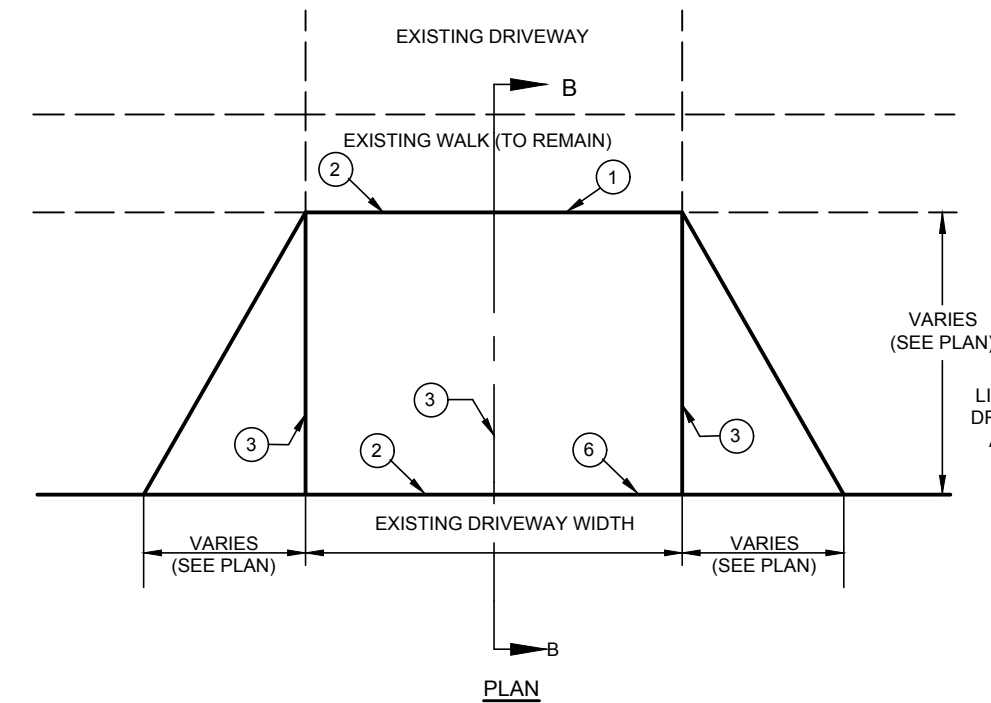
* CONTRACTOR TO FORM EDGES OR PLACE CONCRETE, SAWCUT/REMOVE TO WIDTH OF ASPHALT



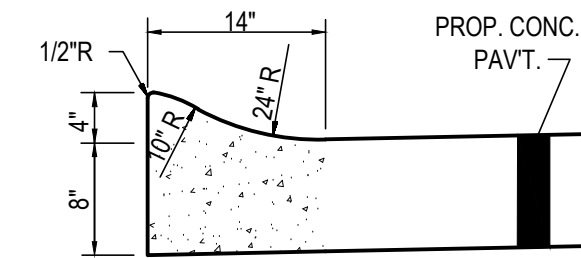
SECTION B-B

- ① SAWCUT AT NEAREST JOINT AND REMOVE EXISTING CONCRETE PAVEMENT (INCIDENTAL TO ITEM 505)
- ② 1" PREFORMED EXPANSION JOINT MATERIAL (FLEXIBLE FOAM-CERAMAR BY W.R. MEADOWS OR APPROVED EQUAL)
- ③ TOOLED JOINT
- ④ ITEM 505 - 6" CONCRETE DRIVEWAY/APRON
- ⑤ COMPACTED SUBGRADE (INCIDENTAL TO ITEM 505 - 6" CONCRETE DRIVEWAY/APRON)
- ⑥ SEAL JOINT WITH GRAY SELF LEVELING SEALANT (SIKA FLEX OR APPROVED EQUAL)

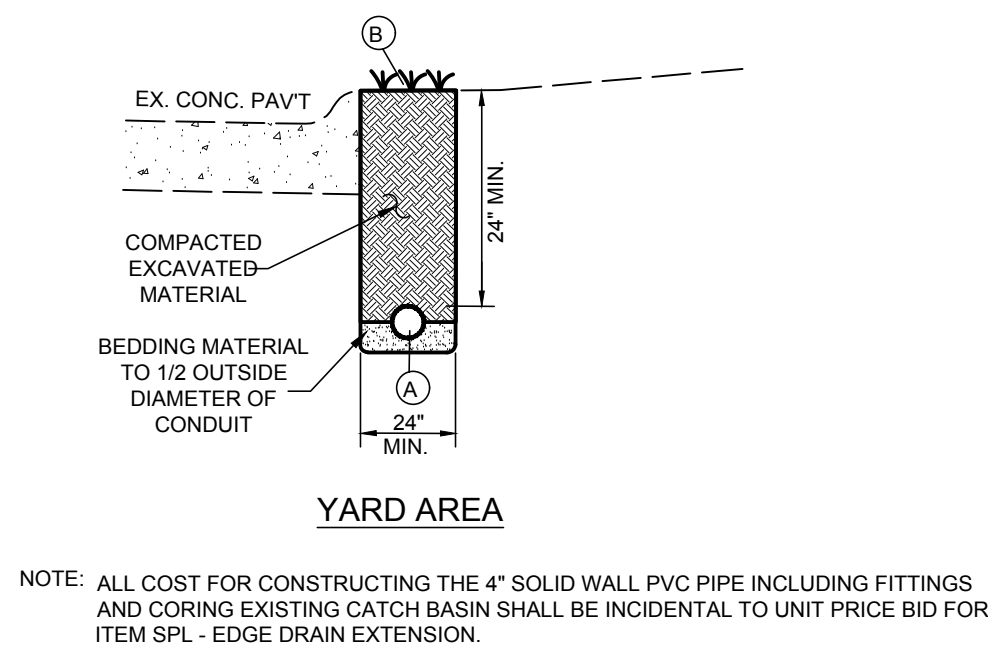
CONCRETE DRIVEWAY REPLACEMENT
N.T.S.



NOTE:
1. ANY YARD AREA DISTURBED BY THE CONSTRUCTION OF THE DRIVEWAY APRON SHALL BE RESTORED WITH TOPSOIL, SEED AND MULCH (INCIDENTAL TO CONCRETE DRIVEWAY APRON REPLACEMENT).
2. ALL EXCAVATION REQUIRED FOR THE PLACEMENT OF THE PROPOSED DRIVEWAY SHALL BE INCIDENTAL TO CONCRETE DRIVEWAY REPLACEMENT BID ITEM.

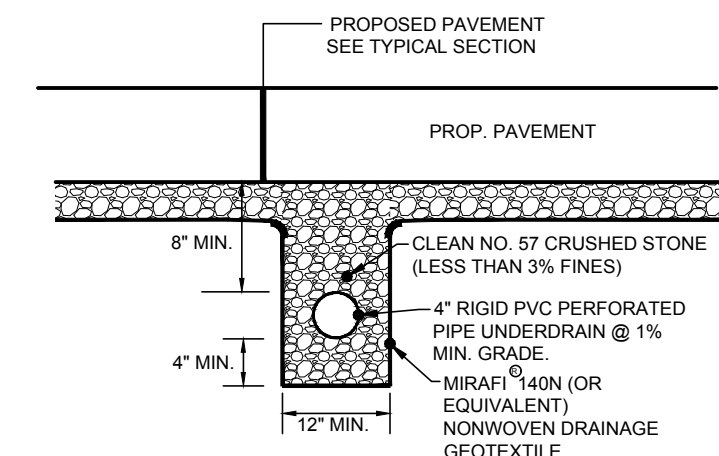


4" ROLLED CURB DETAIL
N.T.S.



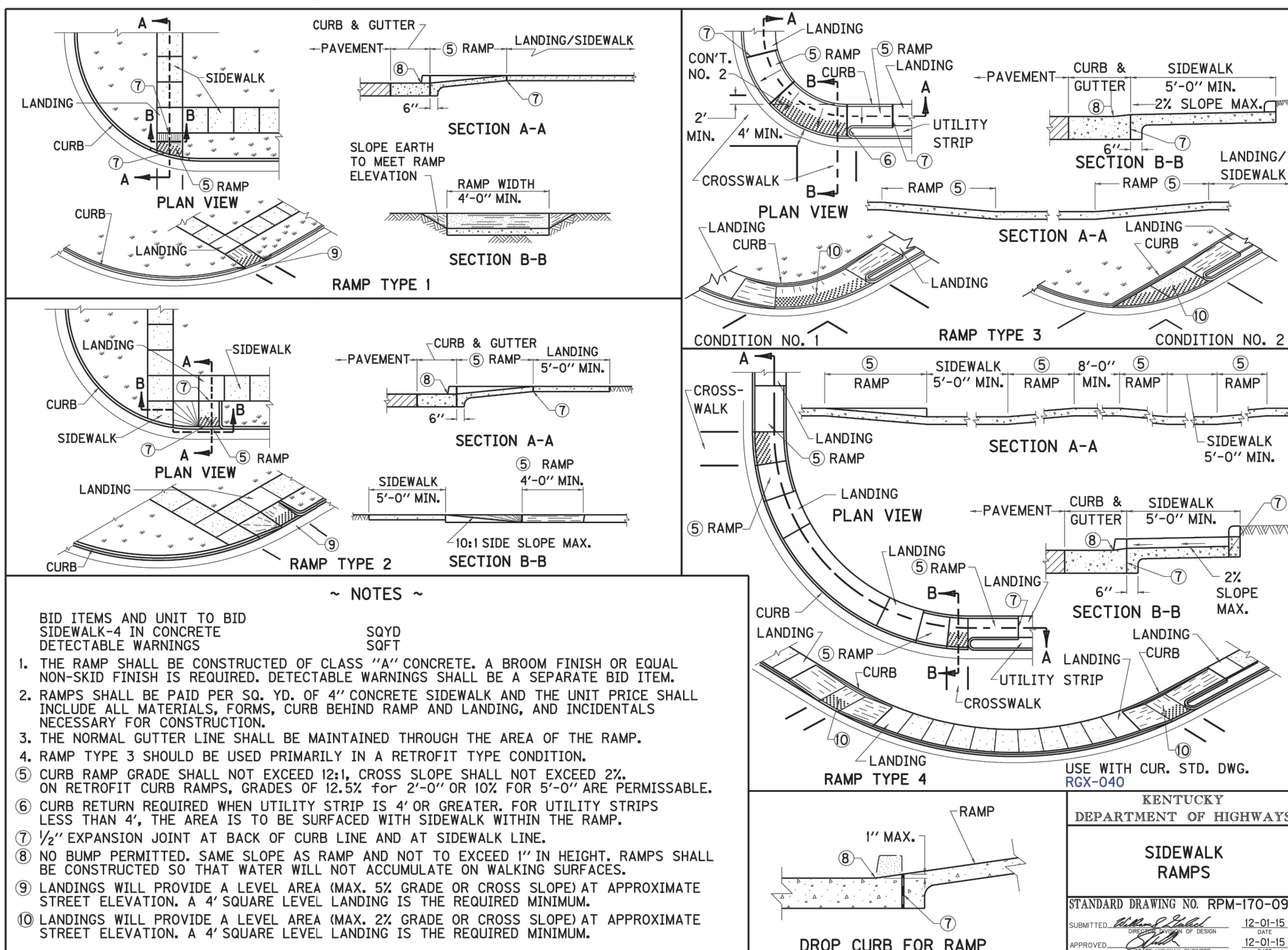
EDGE DRAIN EXTENSION
(Outside Ex. Pav't. - Pritchard Lane) N.T.S.

- ① 4" SOLID WALL PVC PIPE
- ② ITEM SPL - YARD RESTORATION (4" TOPSOIL, SEED AND MULCH) (SEPARATE PAY ITEM)



NOTE: ALL COST FOR CONSTRUCTING THE UNDERDRAIN PER DETAIL SHALL BE INCIDENTAL TO THE UNIT PRICE BID FOR ITEM 704 - 4" RIGID PVC PERFORATED PIPE UNDERDRAIN.

TRANSVERSE UNDERDRAIN DETAIL
N.T.S.



- BID ITEMS AND UNIT TO BID
SIDEWALK - 4" IN CONCRETE
DETECTABLE WARNINGS
SOFT
SOFT
- 1. THE RAMP SHALL BE CONSTRUCTED OF CLASS "A" CONCRETE. A BROOM FINISH OR EQUAL NON-SKID FINISH IS REQUIRED. DETECTABLE WARNINGS SHALL BE A SEPARATE BID ITEM.
- 2. RAMP SHALL BE PAID PER SQ. YD. OF 4" CONCRETE SIDEWALK AND THE UNIT PRICE SHALL INCLUDE ALL MATERIALS, FORMS, CURB BEHIND RAMP AND LANDING, AND INCIDENTALS NECESSARY FOR CONSTRUCTION.
- 3. THE NORMAL GUTTER LINE SHALL BE MAINTAINED THROUGH THE AREA OF THE RAMP.
- 4. RAMP TYPE 3 SHOULD BE USED PRIMARILY IN A RETROFIT TYPE CONDITION.
- ⑤ CURB RAMP GRADE SHALL NOT EXCEED 12%, CROSS SLOPE SHALL NOT EXCEED 2% ON RETROFIT CURB RAMP, GRADES OF 12.5% FOR 2'-0" OR 10% FOR 5'-0" ARE PERMISSIBLE.
- ⑥ CURB RETURN REQUIRED WHEN UTILITY STRIP IS 4' OR GREATER. FOR UTILITY STRIPS LESS THAN 4', THE AREA IS TO BE SURFACED WITH SIDEWALK WITHIN THE RAMP.
- ⑦ 1/2" EXPANSION JOINT AT BACK OF CURB LINE AND AT SIDEWALK LINE.
- ⑧ NO BUMP PERMITTED. SAME SLOPE AS RAMP AND NOT TO EXCEED 1" IN HEIGHT. RAMPS SHALL BE CONSTRUCTED SO THAT WATER WILL NOT ACCUMULATE ON WALKING SURFACES.
- ⑨ LANDINGS WILL PROVIDE A LEVEL AREA (MAX. 5% GRADE OR CROSS SLOPE) AT APPROXIMATE STREET ELEVATION. A 4' SQUARE LEVEL LANDING IS THE REQUIRED MINIMUM.
- ⑩ LANDINGS WILL PROVIDE A LEVEL AREA (MAX. 2% GRADE OR CROSS SLOPE) AT APPROXIMATE STREET ELEVATION. A 4' SQUARE LEVEL LANDING IS THE REQUIRED MINIMUM.

USE WITH CUR. STD. DWG. R03-040
KENTUCKY
DEPARTMENT OF HIGHWAYS
STANDARD DRAWING NO. RPM-170-09
SUBMITTED: 12-20-15
APPROVED: 12-20-15

your trusted advisor
engineers
architects
planners
consultants

DATE	
REVISION	
NO	
ISSUE FOR:	
ISSUE DATE:	5/31/2019
SCALE:	AS SHOWN
DESIGNED BY:	JCOR
DRAWN BY:	JCOR
CHECKED BY:	MHEL

2019 STREET PROGRAM
CITY OF INDEPENDENCE, KY
KENTON COUNTY

DETAILS

PROJECT NO.	190308
SHEET	2
OF	7

THE PATENTED DANDY BAG® IS DESIGNED FOR USE WITH FLAT GRATES (INCLUDING ROUND) AND MOUNTABLE CURBS TO DETAIN SEDIMENT-LADEN STORM WATER. THE SUSPENDED SOLIDS ARE ALLOWED TO SETTLE OUT OF THE SLOWED FLOW PRIOR TO ENTERING THE DANDY BAG®.

Installation

- Stand the grate on end
- Place the Dandy Bag® over the grate
- Roll the grate over so that the open end is up
- Pull up the slack
- Tuck the flap in
- Press the velcro strips together

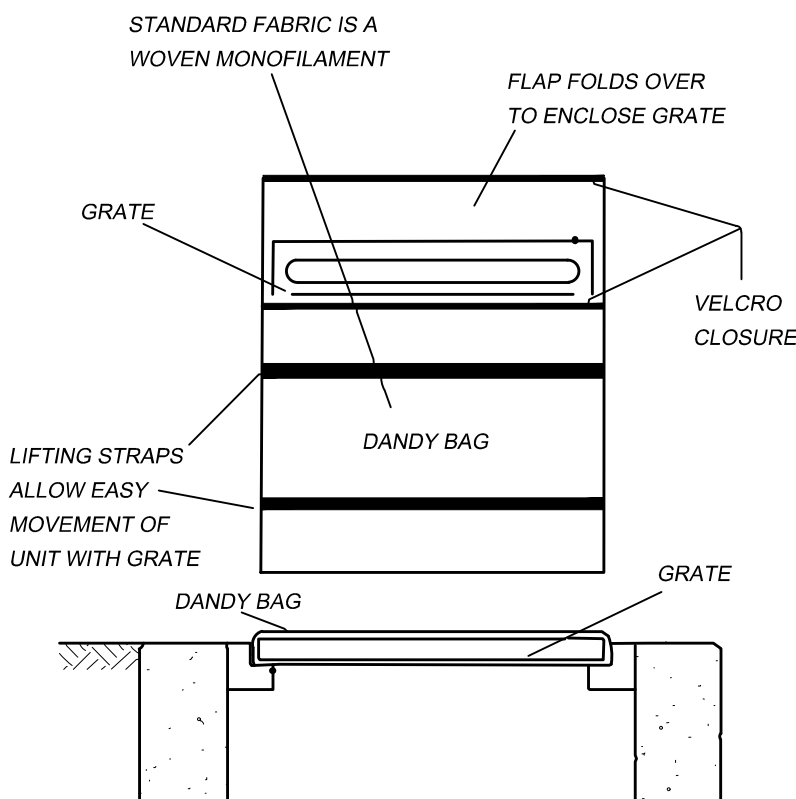
- Be sure that the end of the grate is completely covered by the flap or the Dandy Bag® will not work properly
- Holding the handles, carefully place the Dandy Bag® with the grate inserted into the catch basin frame

Maintenance

To insure proper operation remove silt, sediment, and debris from the surface and the vicinity of the unit with a square point shovel or stiff bristle broom away from environmentally sensitive areas and waterways in manner satisfactory to the engineer/inspector. Remove fine material from inside Dandy Bag® as needed. Dispose of Dandy Bag® no longer in use at an appropriate recycling or solid waste facility.

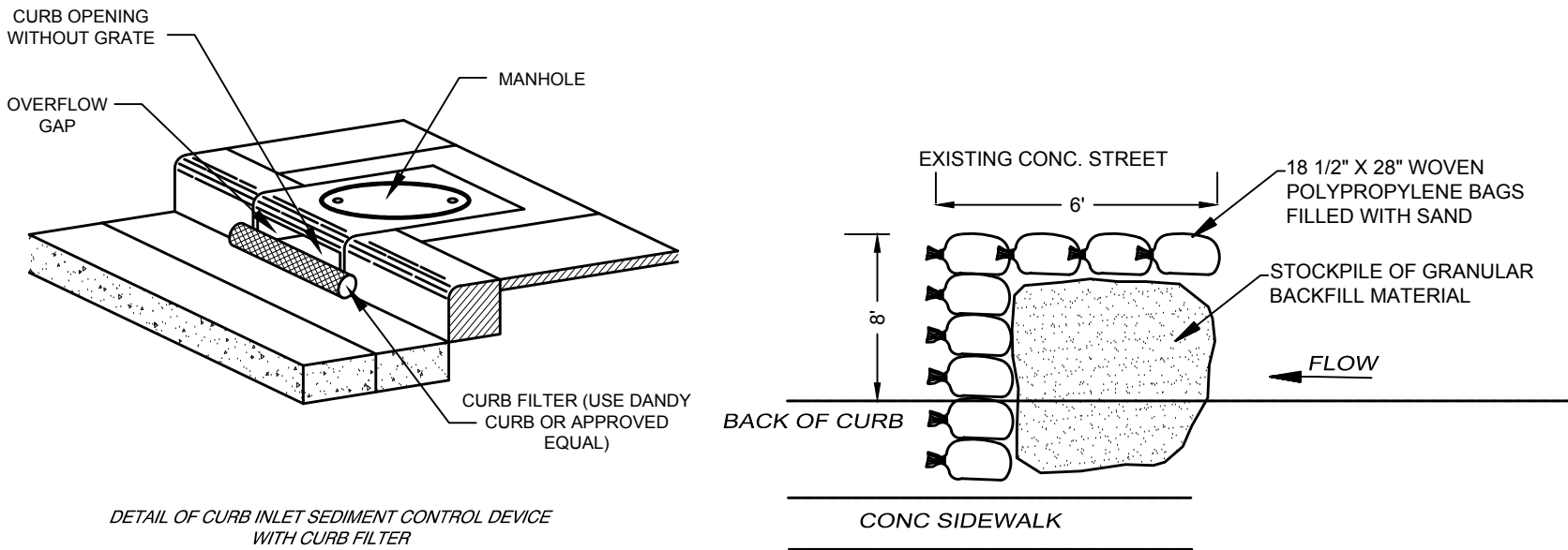
Inlet Inspection

To inspect inlet, remove Dandy Bag® with grate inside, inspect catch basin and replace Dandy Bag® back into grate frame.



PONDING IS LIKELY IF SEDIMENT IS NOT REMOVED REGULARLY. THE DANDY BAG MUST NEVER BE USED WHERE OVERFLOW MAY ENDANGER AND EXPOSED SLOPE. THE DANDY BAG IS NOT INTENDED FOR ANY OTHER USE AND SHOULD NOT BE USED FOR ANY OTHER PURPOSE.

IP DANDY BAG DETAIL
N.T.S.



DETAIL OF CURB INLET SEDIMENT CONTROL DEVICE WITH CURB FILTER

IP DANDY CURB
N.T.S.

SA GRANULAR CONSTRUCTION
MATERIAL
STORAGE AREA

STORM WATER POLLUTION PREVENTION NOTES

1. CONSTRUCTION SEQUENCE

ALL PERIMETER SILT FENCE AND OTHER EROSION CONTROLS SHALL BE IN PLACE BEFORE ANY OTHER EARTH MOVING ACTIVITIES BEGIN.

THE CONTRACTOR SHALL CLEAR AND GRUB ONLY THE AREAS PLANNED FOR EARTH MOVING.

REMOVE TOPSOIL, STOCKPILE IT, AND INSTALL SILT FENCE AROUND PERIMETER.

SEED SOIL STOCKPILE WITH PERENNIAL RYE GRASS AND MULCH WITH STRAW IF NOT TO BE DISTURBED FOR MORE THAN 21 DAYS.

CONSTRUCT SURFACE STORM INLET AND OPEN MANHOLE PROTECTION.

ESTABLISH A TEMPORARY SEEDING ON ALL BARE AREAS THAT ARE TO REMAIN UNDISTURBED FOR MORE THAN 21 DAYS. SEED WITH PERENNIAL RYE GRASS AND MULCH WITH STRAW.

EROSION CONTROLS MUST BE INSPECTED ONCE EVERY 7 DAYS AND WITHIN 24 HOURS OF 0.5" OR GREATER RAINFALL. REMOVE ACCUMULATED SEDIMENT FROM EROSION CONTROLS.

IMMEDIATELY AFTER TOPSOIL HAS BEEN PLACED, STABILIZE THE SAME SURFACE AREA WITH FINAL SEED AND MULCH 7 DAYS AFTER REACHING FINAL GRADE.

AFTER THE VEGETATION HAS BECOME WELL ESTABLISHED, REMOVE TEMPORARY EROSION OR SEDIMENT CONTROL PRACTICES.

- TEMPORARY SEEDING SHALL BE PERENNIAL RYE GRASS (40 LB / ACRE) AND MULCH AT 3 BALES OF STRAW PER 1000 S.F.

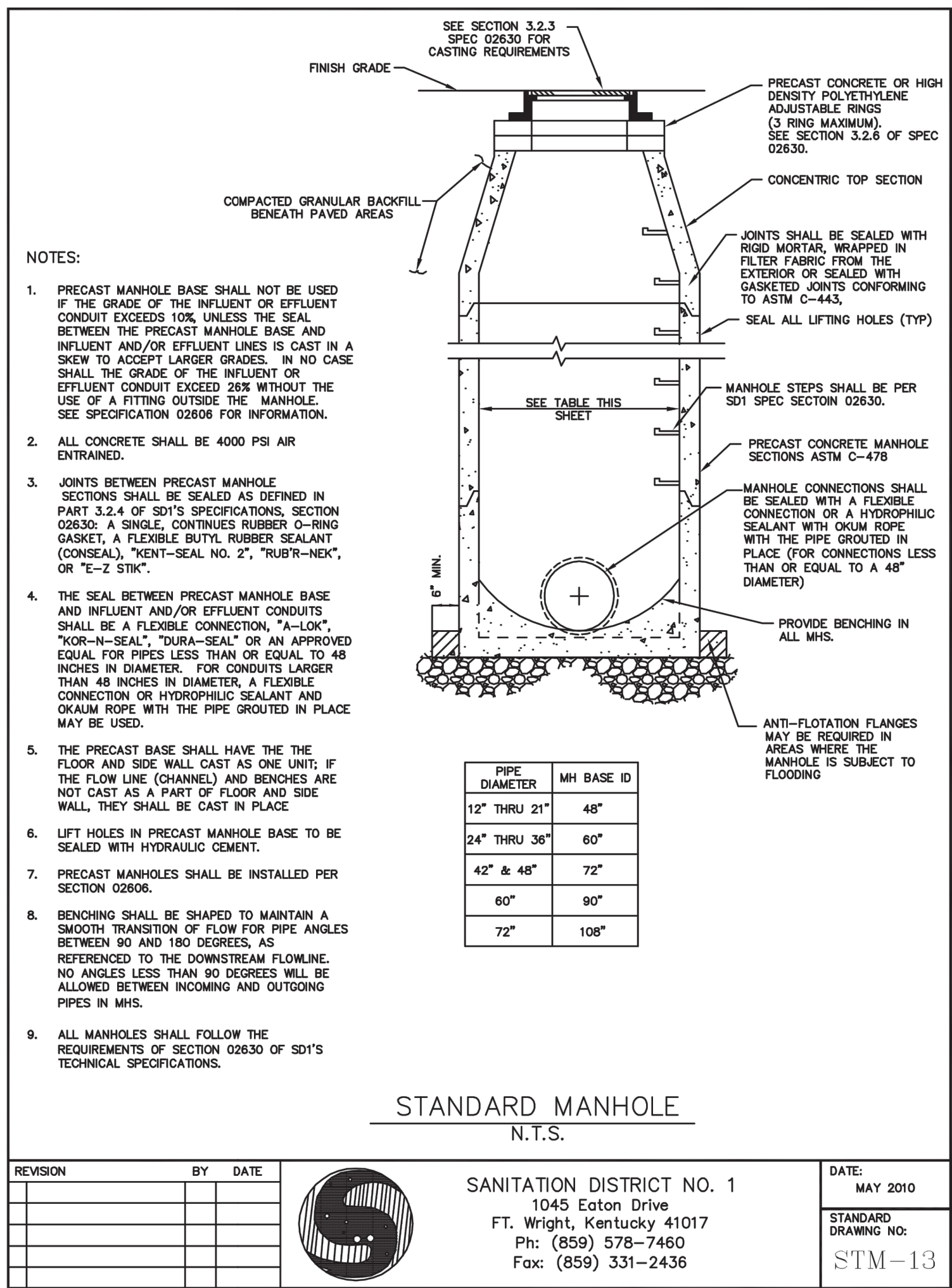
- BEST MANAGEMENT PRACTICES SHALL BE MAINTAINED ON A DAILY BASIS DURING CONSTRUCTION.

- ALL STORM SEWER INLETS WITHIN PROJECT LIMITS SHALL BE PROVIDED WITH INLET PROTECTION AS INDICATED IN THESE PLANS OR AS OTHERWISE APPROVED BY SD1, SUCH AS CATCH BASIN INSERTS.

- SANITATION DISTRICT No.1 IS TO BE CONTACTED 72 HOURS PRIOR TO ANY CONSTRUCTION ACTIVITY AT 859-578-6892.

- BMP'S SHALL BE REVISED OR ADDED TO THE PROJECT AS DEEMED NECESSARY.

- CONCRETE TRUCKS SHALL NOT BE ALLOWED TO WASH OUT WHERE THE WATER WILL DRAIN DIRECTLY INTO THE SEWER SYSTEM. DESIGNATED WASHOUT AREAS SHALL BE ESTABLISHED. CONTRACTOR MAY USE THE WASH OUT DETAIL PROVIDED OR USE A PORTABLE WASHOUT AREA AS LONG AS IT SEPARATES CEMENTITIOUS MATERIAL FROM THE WATER WHERE IT CAN BE ALLOWED TO HARDEN BEFORE TRANSPORTING OFF SITE.




NOTES:

- PRECAST MANHOLE BASE SHALL NOT BE USED IF THE GRADE OF THE INFLUENT OR EFFLUENT CONDUIT EXCEEDS 10% UNLESS THE SEAL BETWEEN THE PRECAST MANHOLE BASE AND INFLUENT AND/OR EFFLUENT LINES IS CAST IN A SKEW TO ACCEPT LARGER GRADES. IN NO CASE SHALL THE GRADE OF THE INFLUENT OR EFFLUENT CONDUIT EXCEED 26% WITHOUT THE USE OF A FITTING OUTSIDE THE MANHOLE. SEE SPECIFICATION 02806 FOR INFORMATION.
- ALL CONCRETE SHALL BE 4000 PSI AIR ENTRAINED.
- JOINTS BETWEEN PRECAST MANHOLE SECTIONS SHALL BE SEALED AS DEFINED IN PART 3.2.4 OF SD1'S SPECIFICATIONS. SECTION 02830: A SINGLE, CONTINUOUS RUBBER O-RING GASKET, A FLEXIBLE BUTYL RUBBER SEALANT (CONSEAL), "KENT-SEAL NO. 2", "RUB'R-NK", OR "E-Z STIK".
- THE SEAL BETWEEN PRECAST MANHOLE BASE AND INFLUENT AND/OR EFFLUENT CONDUITS SHALL BE A FLEXIBLE CONNECTION, "A-LOCK", "KOR-N-SEAL", "DURA-SEAL" OR AN APPROVED EQUAL FOR PIPES LESS THAN OR EQUAL TO 48 INCHES IN DIAMETER. FOR CONDUITS LARGER THAN 48 INCHES IN DIAMETER, A FLEXIBLE CONNECTION OR HYDROPHILIC SEALANT AND OKUM ROPE WITH THE PIPE GROUTED IN PLACE MAY BE USED.
- THE PRECAST BASE SHALL HAVE THE THE FLOOR AND SIDE WALL CAST AS ONE UNIT; IF THE FLOW LINE (CHANNEL) AND BENCHES ARE NOT CAST AS A PART OF FLOOR AND SIDE WALL, THEY SHALL BE CAST IN PLACE.
- LIFT HOLES IN PRECAST MANHOLE BASE TO BE SEALED WITH HYDRAULIC CEMENT.
- PRECAST MANHOLES SHALL BE INSTALLED PER SECTION 02806.
- BENCHING SHALL BE SHAPED TO MAINTAIN A SMOOTH TRANSITION OF FLOW FOR PIPE ANGLES BETWEEN 90 AND 180 DEGREES. AS REFERENCED TO THE DOWNSTREAM FLOWLINE. NO ANGLES LESS THAN 90 DEGREES WILL BE ALLOWED BETWEEN INCOMING AND OUTGOING PIPES IN MHS.
- ALL MANHOLES SHALL FOLLOW THE REQUIREMENTS OF SECTION 02830 OF SD1'S TECHNICAL SPECIFICATIONS.

PIPE DIAMETER	MH BASE ID
12" THRU 21"	48"
24" THRU 36"	60"
42" & 48"	72"
60"	90"
72"	108"

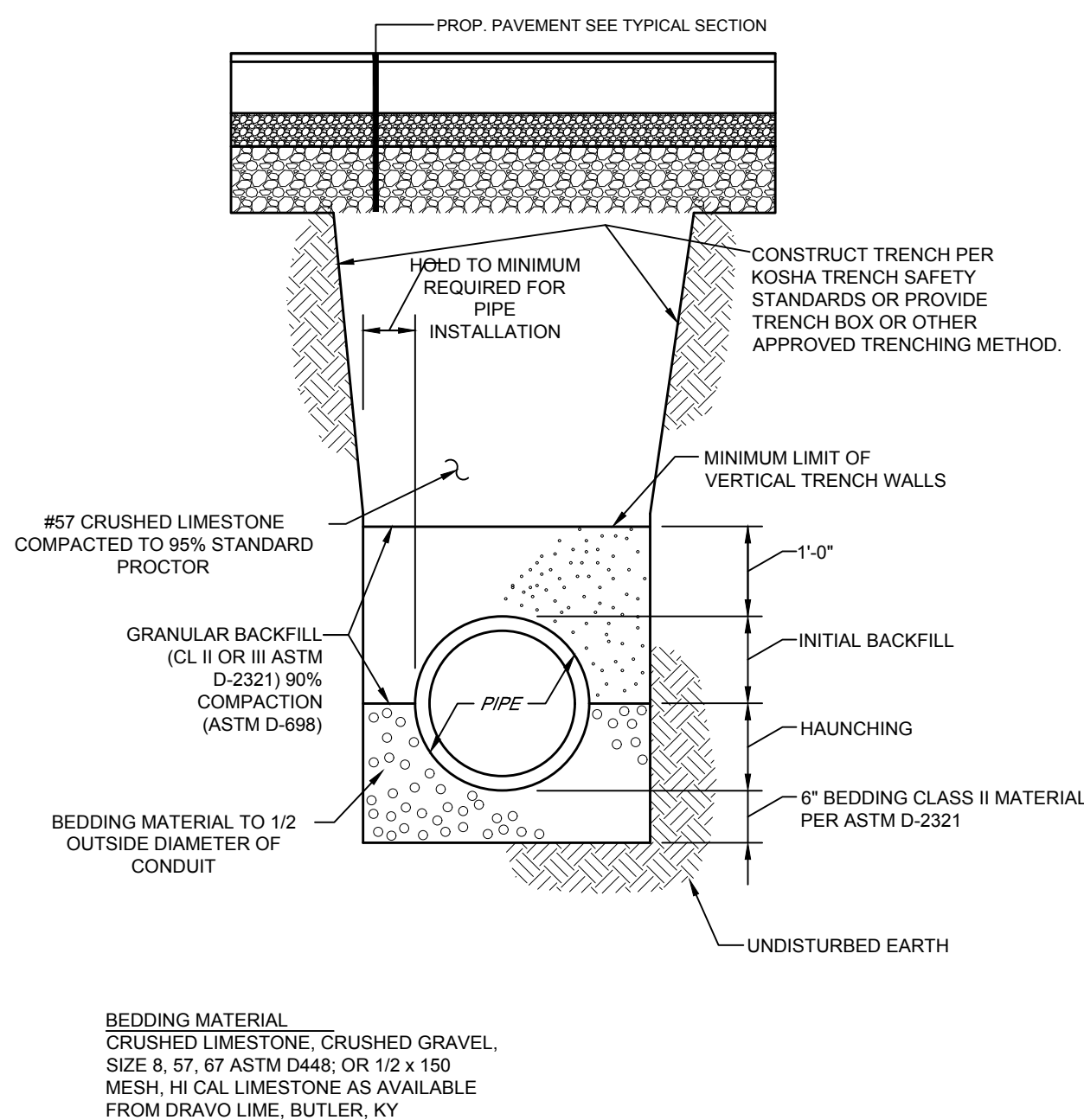
STANDARD MANHOLE
N.T.S.

REVISION	BY	DATE

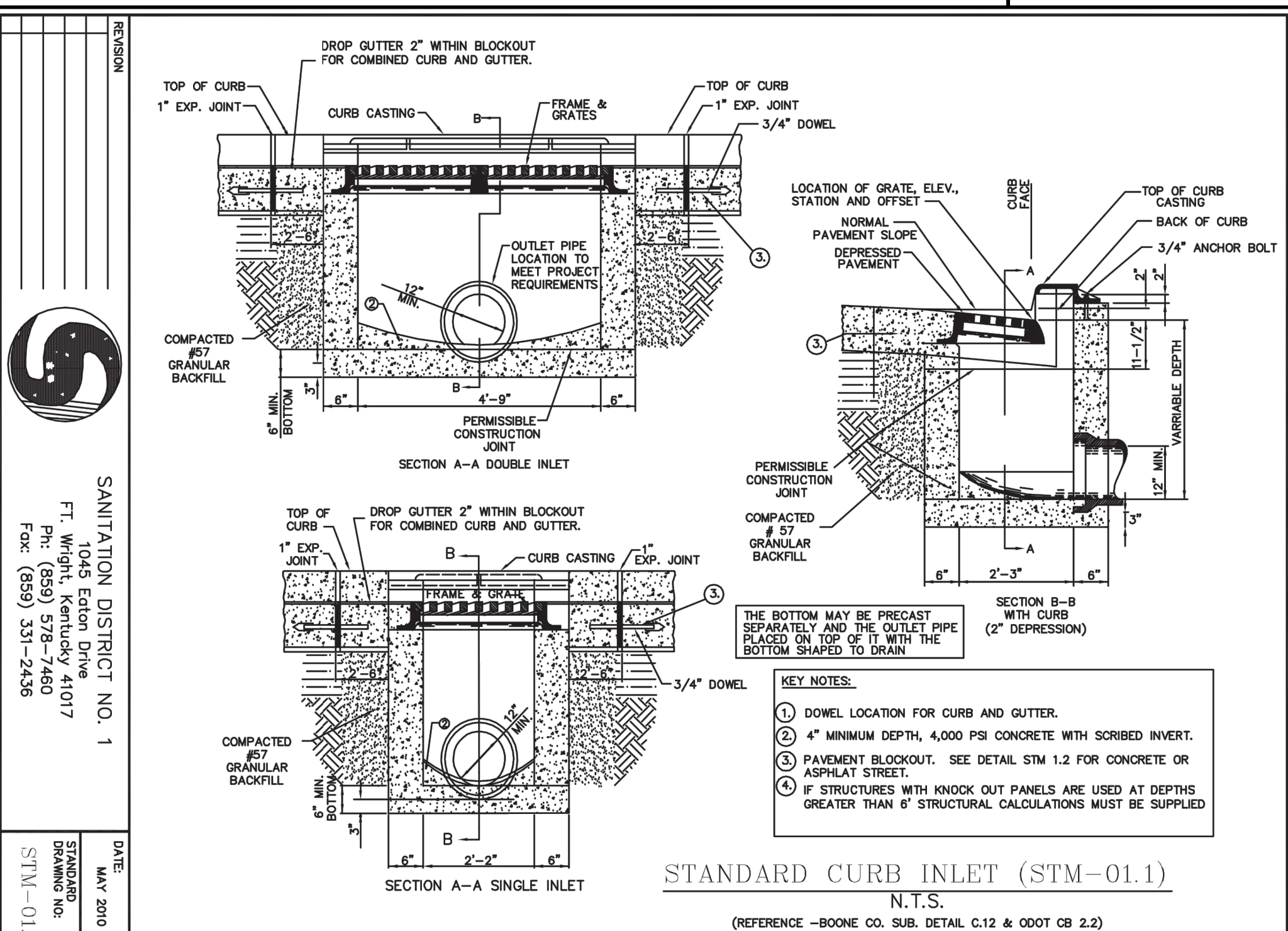


SANITATION DISTRICT NO. 1
1045 Eaton Drive
FT. Wright, Kentucky 41017
Ph: (859) 578-7460
Fax: (859) 331-2436

DATE: MAY 2010
STANDARD DRAWING NO: STM-13

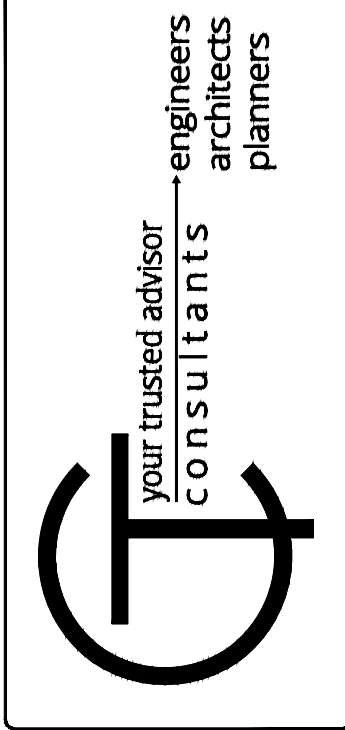


STORM SEWER TRENCH DETAIL - STREET AREA
N.T.S.



STANDARD CURB INLET (STM-01.1)
N.T.S.

(REFERENCE -BOONE CO. SUB. DETAIL C.12 & 0007 CB 2.2)

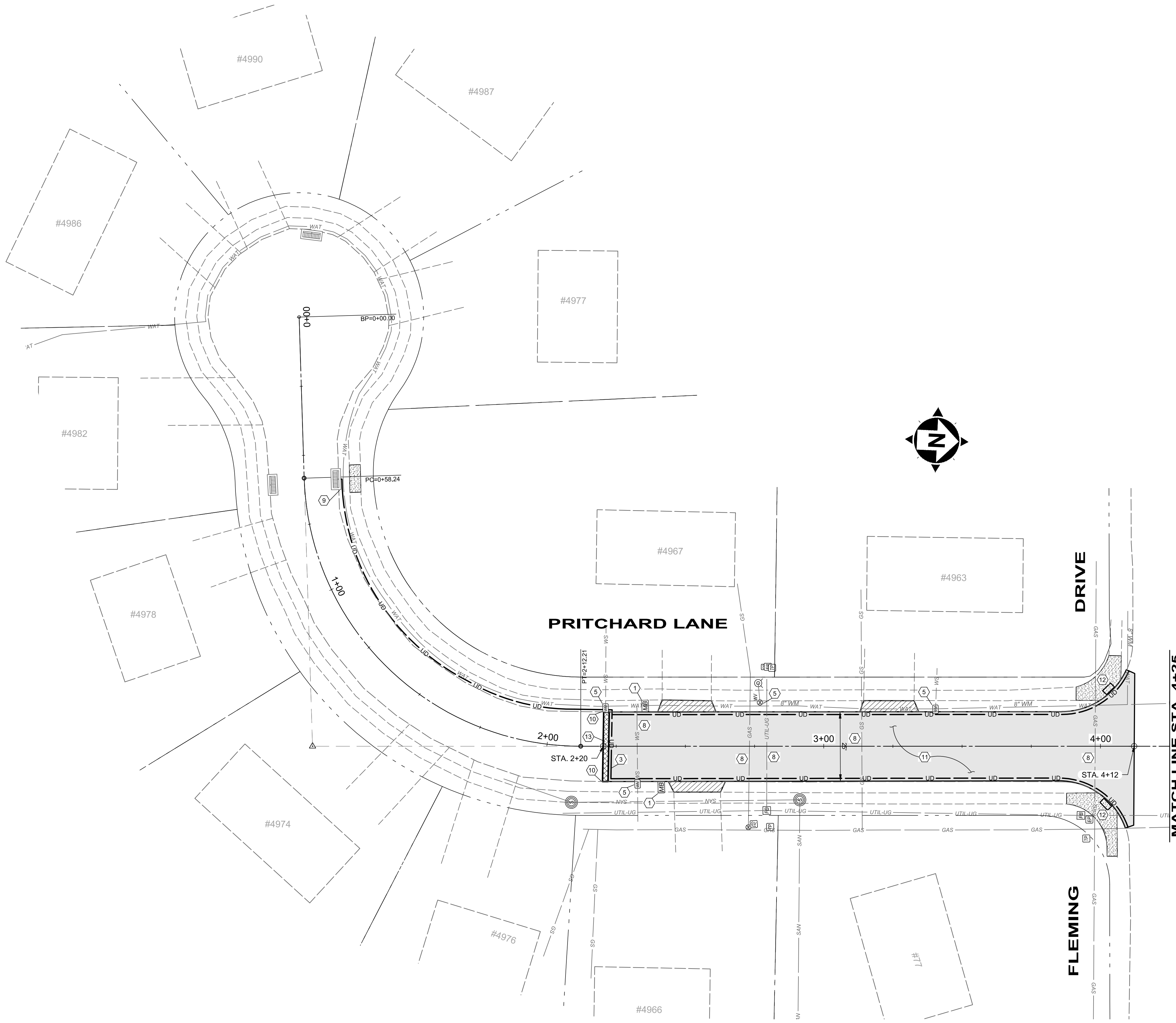


DATE	REVISION	NO	ISSUE FOR:	ISSUE DATE:	SCALE:	DESIGNED BY:	DRAWN BY:	CHECKED BY:
				5/31/2019	AS SHOWN	JCOR	JCOR	MHEL

2019 STREET PROGRAM
CITY OF INDEPENDENCE, KY
KENTON COUNTY

DETAILS

PROJECT NO:	190308
	DET-2
SHEET	OF
3	7



- KEYNOTES**
- 1 REMOVE, SALVAGE, AND REINSTALL EXIST. SIGN OR MAILBOX (INCIDENTAL TO ITEM 202 - CLEARING AND GRUBBING)
 - 2 REMOVE EXIST. STORM SEWER PIPE/STRUCTURE. BACKFILL WITH FLOWABLE FILL
 - 3 INSTALL TRANSVERSE UNDERDRAIN
 - 4 ADJUST STORM STRUCTURE TO GRADE PER SD1 REQ'S
 - 5 ADJUST WV OR WM TO GRADE PER NKWD REQ'S
 - 6 ADJUST GAS VALVE TO GRADE PER DUKE ENERGY REQ'S
 - 7 INSTALL PROPOSED STORM STRUCTURE PER DETAIL
 - 8 CONTRACTOR TO EXPOSED UTILITY PRIOR TO CONSTRUCTION FOR ACTUAL LOCATION (NOTIFY ENGINEER IMMEDIATELY OF CONFLICTS)
 - 9 CONNECT PROPOSED UNDERDRAIN TO EXISTING STORM STRUCTURE
 - 10 TRANSITION PROP. CURB TO EXIST. CURB IN 5 FEET
 - 11 REMOVE EXISTING CONCRETE PAVEMENT
 - 12 REMOVE/REPLACE ADA ACCESSIBLE CURB RAMP
 - 13 CONSTRUCT 24" WIDE ASPHALT JOINT - SEE DETAIL
 - 14 REMOVE/REPLACE EXIST. CURB INLET TOP SECTION AND CASTING/GRATE w/ DOUBLE VANE GRATE
 - 15 REMOVE/REPLACE EXIST. CURB INLET TOP SECTION AND CASTING/GRATE w/ MOUNTABLE GRATE
 - 16 ADJUST SANITARY STRUCTURE TO GRADE PER SD1 REQ'S
 - 17 CONNECT PROPOSED PIPE TO EXISTING PIPE WITH CONCRETE COLLAR

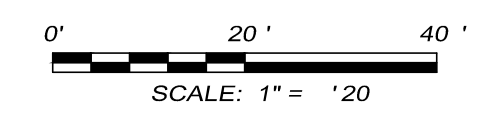
HATCH LEGEND

6" CONCRETE DRIVEWAY APRON REMOVAL AND REPLACEMENT (SEE DETAIL ON SHEET 2)

PROPOSED ROADWAY REPLACEMENT

4" CONCRETE WALK REMOVAL AND REPLACEMENT (SEE DETAIL ON SHEET 2)

FULL DEPTH ASPHALT JOINT (SEE DETAIL ON SHEET 2)



DATE

REVISION

NO

ISSUE FOR:

ISSUE DATE: 5/31/2019

SCALE: AS SHOWN

DESIGNED BY: JCOR

DRAWN BY: JCOR

CHECKED BY: MHIL

2019 STREET PROGRAM

CITY OF INDEPENDENCE, KY

KENTON COUNTY

PRITCHARD LANE

STA. 0+00 TO STA. 4+25

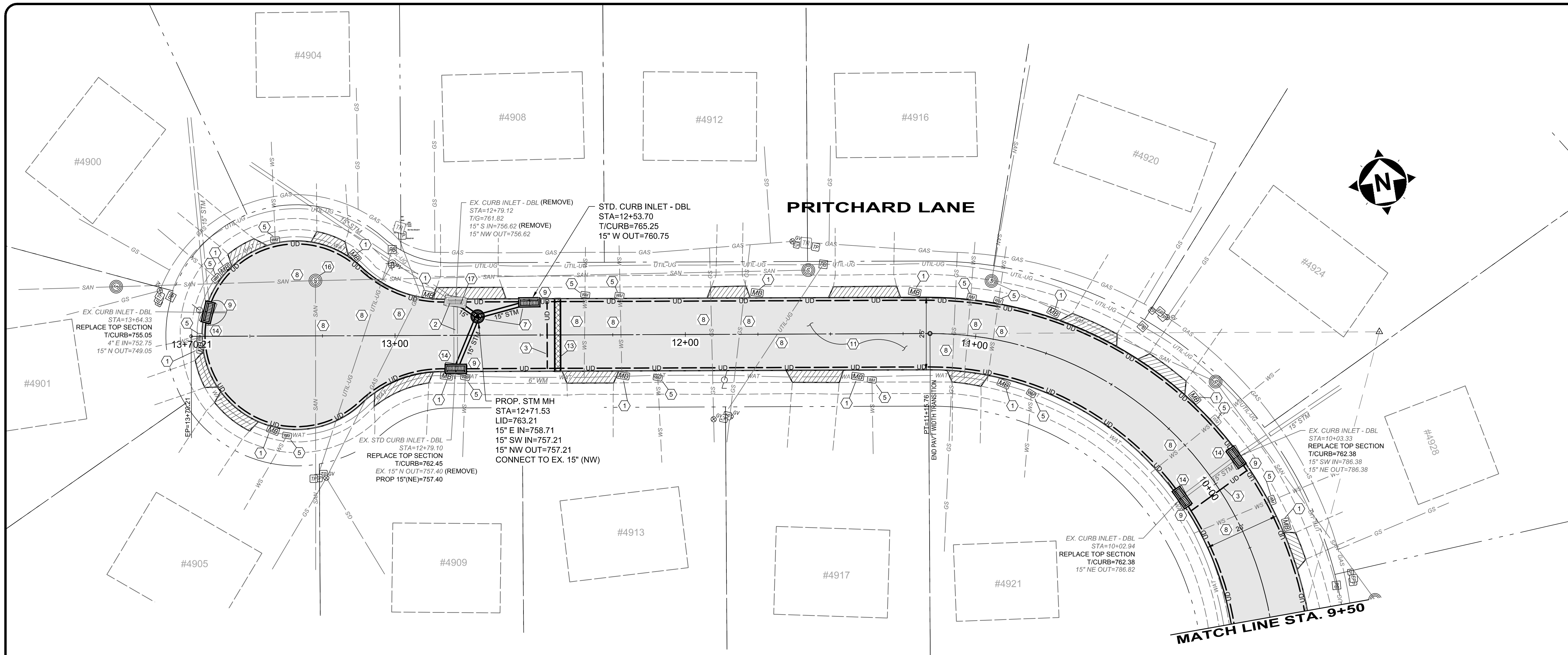
PROJECT NO.

190308

PNP-1

SHEET 4 OF 7

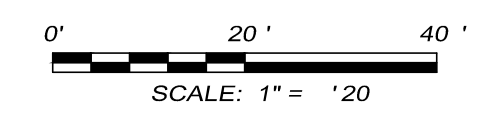
H:\2019\190308\DWG\SHETSC_190308_PNP.DWG - PNP-1 - 6/3/2019 2:21:33 PM - JAMES CORNELL



- KEYNOTES**
- 1 REMOVE, SALVAGE, AND REINSTALL EXIST. SIGN OR MAIL BOX (INCIDENTAL TO ITEM 202 - CLEARING AND GRUBBING)
 - 2 REMOVE EXIST. STORM SEWER PIPE/STRUCTURE, BACKFILL WITH FLOWABLE FILL
 - 3 INSTALL TRANSVERSE UNDERDRAIN
 - 4 ADJUST STORM STRUCTURE TO GRADE PER SD1 REQ'S
 - 5 ADJUST WV OR WM TO GRADE PER NKWD REQ'S
 - 6 ADJUST GAS VALVE TO GRADE PER DUKE ENERGY REQ'S
 - 7 INSTALL PROPOSED STORM STRUCTURE PER DETAIL
 - 8 CONTRACTOR TO EXPOSED UTILITY PRIOR TO CONSTRUCTION FOR ACTUAL LOCATION (NOTIFY ENGINEER IMMEDIATELY OF CONFLICTS)
 - 9 CONNECT PROPOSED UNDERDRAIN TO EXISTING STORM STRUCTURE
 - 10 TRANSITION PROP. CURB TO EXIST. CURB IN 5 FEET
 - 11 REMOVE EXISTING CONCRETE PAVEMENT
 - 12 REMOVE/REPLACE ADA ACCESSIBLE CURB RAMP
 - 13 CONSTRUCT 24" WIDE ASPHALT JOINT - SEE DETAIL
 - 14 REMOVE/REPLACE EXIST. CURB INLET TOP SECTION AND CASTING/GRATE w/ DOUBLE YANE GRATE
 - 15 REMOVE/REPLACE EXIST. CURB INLET TOP SECTION AND CASTING/GRATE w/ MOUNTABLE GRATE
 - 16 ADJUST SANITARY STRUCTURE TO GRADE PER SD1 REQ'S
 - 17 CONNECT PROPOSED PIPE TO EXISTING PIPE WITH CONCRETE COLLAR

HATCH LEGEND

6" CONCRETE DRIVEWAY APRON REMOVAL AND REPLACEMENT (SEE DETAIL ON SHEET 2)	
PROPOSED ROADWAY REPLACEMENT	
4" CONCRETE WALK REMOVAL AND REPLACEMENT (SEE DETAIL ON SHEET 2)	
FULL DEPTH ASPHALT JOINT (SEE DETAIL ON SHEET 2)	



your trusted advisor

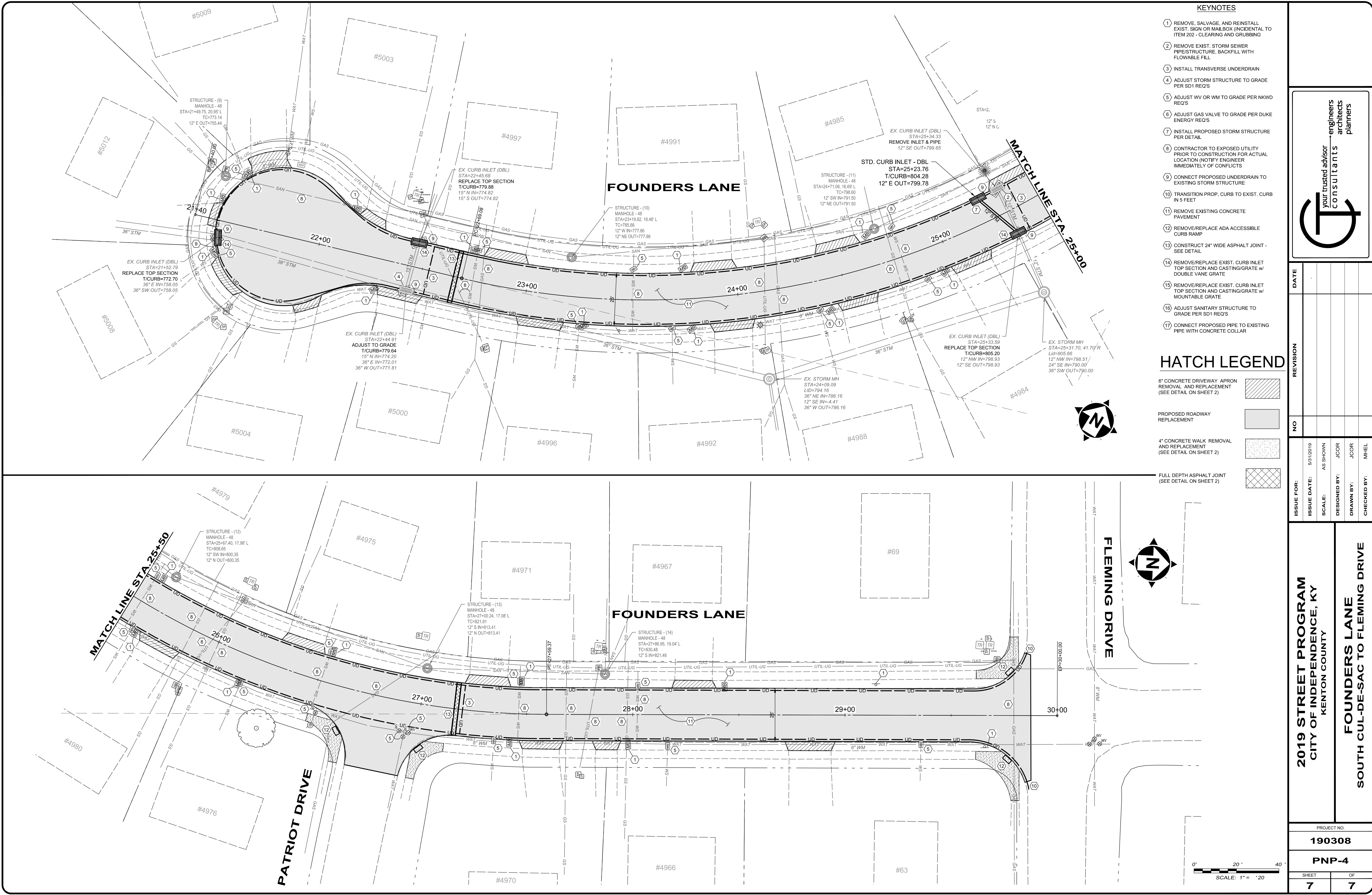
engineers
architects
planners

DATE	
REVISION	
NO	
ISSUE FOR:	ISSUE DATE: 5/31/2019
SCALE: AS SHOWN	DESIGNED BY: JCOR
DRAWN BY: JCOR	CHECKED BY: MHIL

2019 STREET PROGRAM
CITY OF INDEPENDENCE, KY
KENTON COUNTY

PRITCHARD LANE
STA. 9+50 TO NORTH CUL-DA-SAC

PROJECT NO.	
190308	
PNP-3	
SHEET	OF
6	7



KEYNOTES

- 1 REMOVE, SALVAGE, AND REINSTALL EXIST. SIGN OR MAILBOX (INCIDENTAL TO ITEM 202 - CLEARING AND GRUBBING)
- 2 REMOVE EXIST. STORM SEWER PIPE/STRUCTURE, BACKFILL WITH FLOWABLE FILL
- 3 INSTALL TRANSVERSE UNDERDRAIN
- 4 ADJUST STORM STRUCTURE TO GRADE PER SD1 REQ'S
- 5 ADJUST WV OR WM TO GRADE PER NKWD REQ'S
- 6 ADJUST GAS VALVE TO GRADE PER DUKE ENERGY REQ'S
- 7 INSTALL PROPOSED STORM STRUCTURE PER DETAIL
- 8 CONTRACTOR TO EXPOSED UTILITY PRIOR TO CONSTRUCTION FOR ACTUAL LOCATION (NOTIFY ENGINEER IMMEDIATELY OF CONFLICTS)
- 9 CONNECT PROPOSED UNDERDRAIN TO EXISTING STORM STRUCTURE
- 10 TRANSITION PROP. CURB TO EXIST. CURB IN 5 FEET
- 11 REMOVE EXISTING CONCRETE PAVEMENT
- 12 REMOVE/REPLACE ADA ACCESSIBLE CURB RAMP
- 13 CONSTRUCT 24" WIDE ASPHALT JOINT - SEE DETAIL
- 14 REMOVE/REPLACE EXIST. CURB INLET TOP SECTION AND CASTING/GRATE w/ DOUBLE VANE GRATE
- 15 REMOVE/REPLACE EXIST. CURB INLET TOP SECTION AND CASTING/GRATE w/ MOUNTABLE GRATE
- 16 ADJUST SANITARY STRUCTURE TO GRADE PER SD1 REQ'S
- 17 CONNECT PROPOSED PIPE TO EXISTING PIPE WITH CONCRETE COLLAR

HATCH LEGEND

- 6" CONCRETE DRIVEWAY APRON REMOVAL AND REPLACEMENT (SEE DETAIL ON SHEET 2)
- PROPOSED ROADWAY REPLACEMENT
- 4" CONCRETE WALK REMOVAL AND REPLACEMENT (SEE DETAIL ON SHEET 2)
- FULL DEPTH ASPHALT JOINT (SEE DETAIL ON SHEET 2)

<div><div><div>your trusted advisor</div><div>engineers</div><div>architects</div><div>planners</div><div>consultants</div></div><div><div>T</div></div></div>										DATE		REVISION		NO		ISSUE FOR:		ISSUE DATE:		SCALE:		DESIGNED BY:		DRAWN BY:		CHECKED BY:	