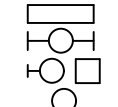


Drawing = c:\Users\Gschwaben\AppData\Local\Temp\AcPublish_3428\23022_E1 - ELECTRICAL SCHEDULES AND DETAILS.dwg Tab = E1 Username = schwabenc Date = Feb 21, 2023 - 12:57pm

LIGHTING FIXTURE SCHEDULE				
SYMBOL	CATALOG NO.	DESCRIPTION	MOUNTING	LAMP(S)
A1	EPH-LS-08-###-B LK-57-70-##-C04 EPH-LS-###-BLK- LV-NC-LY	EPHESUS: 20.36"x13.76"x24.39" LED SPORTS LIGHT FIXTURE WITH BLACK FINISH, 5700K COLOR TEMPERATURE, 70 CRI, AND 240V LED DRIVER. REFER TO SPECIFICATIONS FOR PRODUCT AND PERFORMANCE REQUIREMENTS. LIGHTING OPTIC AND OUTPUT CHARACTERISTICS AND NUMBER OF FIXTURES TO BE DETERMINED BY MANUFACTURER BASED ON PHOTOMETRIC CALCULATIONS. CONTRACTOR TO PROVIDE ALL CROSS ARMS, MOUNTING BRACKETS, ETC. FOR A COMPLETE ASSEMBLY. ### IN CATALOG NUMBER INDICATES CHARACTERISTICS THAT MAY VARY BETWEEN FIXTURES.	EXISTING POLE	INTEGRAL LED
ENGINEER APPROVED EQUIVALENT FIXTURES BY THE FOLLOWING MANUFACTURERS ARE ACCEPTABLE:				
SYMBOL	MANUFACTURER			
A1	AS SPECIFIED TO MATCH EXISTING			

ABBREVIATION LEGEND	
SYMBOL	DESCRIPTION
EC	ELECTRICAL CONTRACTOR
EMT	GALVANIZED ELECTRIC METALLIC TUBING (THINWALL), UL LISTED
PVC	CARLON PLASTIC CONDUIT, HEAVY WALL TYPE, POLYVINYL CHLORIDE, UL LISTED, SCHEDULE 40 UNLESS NOTED OTHERWISE.
"X"	SUBSCRIPT "X" BY SYMBOL INDICATES EXISTING ITEM TO REMAIN.

GENERAL LEGEND	
SYMBOL	DESCRIPTION
\$ Ⓢ	ALL ITEMS SHOWN DASHED ON DEMOLITION PLANS TO BE REMOVED (UNLESS OTHERWISE NOTED).

LIGHTS/SWITCHES LEGEND	
SYMBOL	DESCRIPTION
	LED LIGHTING FIXTURES COMPLETE WITH LAMPS. REFER TO LIGHTING FIXTURE SCHEDULE FOR DETAILS.

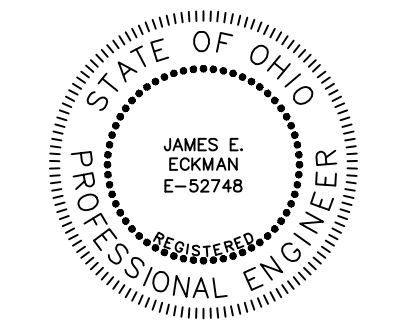
- | ELECTRICAL GENERAL NOTES | |
|--------------------------|--|
| 1. | THE GENERAL NOTES LISTED HERE APPLY TO ALL ELECTRICAL DRAWINGS IN ADDITION TO ANY ADDITIONAL DRAWING NOTES ON THE INDIVIDUAL DRAWINGS. |
| 2. | DARK, DASHED ITEMS INDICATE ELECTRICAL EQUIPMENT, DEVICES, AND/OR LIGHTING TO BE REMOVED UNDER THE DEMOLITION PHASE OF PROJECT. |
| 3. | SEE SPECIFICATIONS FOR SALVAGE RIGHTS TO ANY EQUIPMENT OR MATERIALS BEING REMOVED. |
| 4. | REMOVE ALL HANGERS AND SUPPORTS SERVING CONDUIT AND WIRE TO BE DEMOLISHED. PROVIDE AND/OR ADJUST EXISTING HANGERS TO SUPPORT ANY REMAINING CONDUIT AND WIRE, OR EQUIPMENT ADJACENT, TO REMAIN. |
| 5. | REMOVE ALL EXISTING WIRE FROM CONDUITS TO BE ABANDONED. REFER TO SPECIFICATIONS FOR REQUIREMENTS REGARDING ABANDONED CONDUITS. |
| 6. | SEE CODED NOTES ON INDIVIDUAL DRAWING SHEETS FOR SPECIFIC INSTRUCTIONAL NOTES. |
| 7. | FIELD VERIFY EXISTING CONDITIONS. |
| 8. | THE ELECTRICAL DESIGN DRAWINGS ARE DIAGRAMMATIC AND ARE NOT INTENDED TO SHOW EXACT LOCATION OF EQUIPMENT, LIGHTING, AND DEVICES UNLESS DIMENSIONS ARE GIVEN FOR CLEARANCES, ETC. LIGHTING, DEVICES AND ELECTRICAL EQUIPMENT ARE TO BE INSTALLED ALONG THE GENERAL PLANS SHOWN ON THE DRAWINGS, BUT KEEPING IN MIND ACTUAL BUILDING CONDITIONS WHICH MUST BE CONFIRMED WITH-IN THE ACTUAL WORK AREA. CONTRACTORS, IN THEIR BIDS, ARE REQUIRED TO INCLUDE ALL LABOR AND MATERIALS AND OTHER RELATED WORK NECESSARY TO PROVIDE MINOR OFFSETS IN ELECTRICAL INSTALLATION TO AVOID CONFLICT WITH OTHER WORK ON THIS PROJECT, OR AS REQUIRED IN ORDER TO OBTAIN MAXIMUM HEAD ROOM OR EQUIPMENT ACCESS IN SPACES. |
| 9. | AN ATTEMPT HAS BEEN MADE TO SHOW ALL ELECTRICAL ITEMS TO REMAIN OR BE REMOVED. EC SHALL FIELD VERIFY EXISTING CONDITIONS AND REMOVE AND/OR RELOCATE ANY ITEM WHICH INTERFERES WITH NEW CONSTRUCTION. |

OWNER FURNISHED LIGHTS	
OWNER IS IN POSSESSION OF (2) TWO LIGHT FIXTURES WHICH SHALL BE INSTALLED ON FIELD 1 BY THE CONTRACTOR AS PART OF THIS SCOPE OF WORK. LIGHT FIXTURES ARE EPHESUS PART NUMBER #EPH-LS-08-0640-57-70-2S. FIXTURE SHALL BE INCLUDED IN PHOTOMETRIC CALCULATIONS. ALL NECESSARY MOUNTING HARDWARE IS TO BE PROVIDED BY CONTRACTOR.	



**SCHEESER
BUCKLEY
MAYFIELD**

1540 CORPORATE WOODS PARKWAY
UNIONTOWN, OH 44685
330-526-2700
sbmce.com



J. Egan 3/3/23
SIGNATURE DATE

**YORK RD. NORTH ROYALTON, OHIO
BASEBALL FIELD LIGHTING
UPGRADE PHASE 4**

REVISIONS:

DATE:	3/3/23
DRAWN BY:	G.W.J.
CHECKED BY:	T.M.M.
JOB NO.:	23022

NOTES, LEGENDS,
AND SCHEDULES

York Rd Ballfields



PLAN NOTES

A. CONTRACTOR TO PERFORM PRE BID SITE VISIT TO FIELD VERIFY ALL MEASUREMENTS. SCALED PLANS ARE INTENDED TO BE APPROXIMATE ONLY AND SHOULD NOT BE RELIED ON FOR BIDDING OR CONSTRUCTION PURPOSES.

B. CONTRACTOR IS RESPONSIBLE FOR ANY GROUND DAMAGE CAUSED BY THIS WORK. REPAIR GROUND TO PREVIOUS CONDITIONS TO THE SATISFACTION OF THE OWNER. PROVIDE BEFORE AND AFTER PHOTOS OF SITE TO VERIFY CAUSE OF ANY DAMAGE.

CODED NOTES

- EXISTING UTILITY PAD MOUNTED TRANSFORMER TO REMAIN.
- LOCATION OF ELECTRICAL DISTRIBUTION TO REMAIN.
- EXISTING LIGHTING CONTROL PANELS TO REMAIN.
- REMOVE EXISTING FIELD 1 LIGHT FIXTURES AND ASSOCIATED SUPPORT STRUCTURE. EXISTING POLE TO REMAIN. REMOVE WIRING AND CONDUIT BACK TO NEAREST JUNCTION BOX TO REMAIN AND MAINTAIN FOR REUSE UNDER NEW WORK. FIELD VERIFY EXACT LOCATION.
- EXISTING WALKWAY LIGHTS TO REMAIN.
- EXISTING POLE AND SPORTS LIGHTING FIXTURE TO REMAIN.
- EXISTING METER AND CONTROL PANELS FOR FIELD LIGHTS TO REMAIN.



SCHEESER BUCKLEY MAYFIELD
 1540 CORPORATE WOODS PARKWAY
 UNIONTOWN, OH 44685
 330-526-2700
 sbmce.com

STATE OF OHIO
 JAMES E. ECKMAN
 E-52748
 PROFESSIONAL ENGINEER
 J. E. A.
 SIGNATURE DATE 3/3/23

YORK RD. NORTH ROYALTON, OHIO BASEBALL FIELD LIGHTING UPGRADE PHASE 4

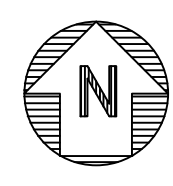
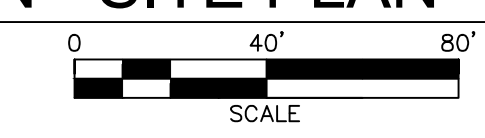
REVISIONS:

DATE: 3/3/23
 DRAWN BY: G.W.J.
 CHECKED BY: T.M.M.
 JOB NO.: 23022

DEMOLITION - SITE
 PLAN - ELECTRICAL

E2

DEMOLITION - SITE PLAN - ELECTRICAL



Drawing = M:\2023\23022\Design\Elec\23022.E2 - DEMO_OVERALL SITE PLAN - ELEC.dwg Tab = E2 Username = schwabenc Date = Feb 21, 2023 - 12:57pm

York Rd Ballfields



PLAN NOTES

A. CONTRACTOR TO PERFORM PRE BID SITE VISIT TO FIELD VERIFY ALL MEASUREMENTS. SCALED PLANS ARE INTENDED TO BE APPROXIMATE ONLY AND SHOULD NOT BE RELIED ON FOR BIDDING OR CONSTRUCTION PURPOSES.

B. CONTRACTOR IS RESPONSIBLE FOR ANY GROUND DAMAGE CAUSED BY THIS WORK. REPAIR GROUND TO PREVIOUS CONDITIONS TO THE SATISFACTION OF THE OWNER. PROVIDE BEFORE AND AFTER PHOTOS OF SITE TO VERIFY CAUSE OF ANY DAMAGE.

C. ALL BALL FIELD LIGHTING TO BE OF THE SAME MANUFACTURER.

D. PHOTOMETRIC CALCULATIONS PERFORMED ARE TO BE FOR ENTIRE FIELD TAKING INTO ACCOUNT LIGHTS INSTALLED UNDER PREVIOUS PHASES, NOT JUST FIXTURES TO BE REPLACED. REFER TO SPECIFICATIONS FOR ADDITIONAL INFORMATION.

E. EXACT QUANTITIES OF LIGHT FIXTURES NECESSARY TO BE DETERMINED BASED ON PHOTOMETRIC CALCULATIONS PERFORMED BY MANUFACTURER. REFER TO SPECIFICATIONS FOR ADDITIONAL INFORMATION. CONTACT ANDY PORTS AT E LIGHTING AND CONTROLS (216)741-4545

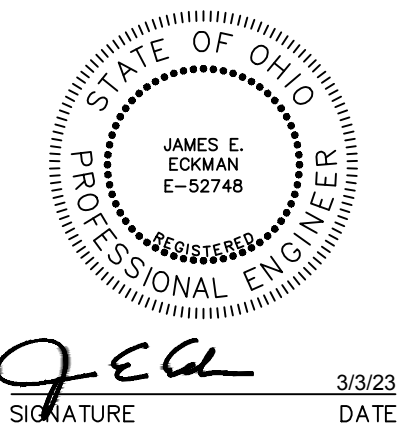
F. FIELD 1 LIGHT POLES EXTEND 50' FROM GRADE.

CODED NOTES

- EXISTING UTILITY PAD MOUNTED TRANSFORMER TO REMAIN.
- LOCATION OF ELECTRICAL DISTRIBUTION TO REMAIN.
- EXISTING LIGHTING CONTROL PANELS TO REMAIN.
- PROVIDE NEW FIELD 1 LIGHT FIXTURES AND ASSOCIATED SUPPORT STRUCTURE ON EXISTING POLE. SPLICE AND EXTEND EXISTING WIRING AND CONDUIT TO NEW FIXTURES AS NECESSARY.
- EXISTING WALKWAY LIGHTS TO REMAIN.
- EXISTING POLE AND SPORTS LIGHTING FIXTURE TO REMAIN.
- EXISTING METER AND CONTROL PANELS FOR FIELD LIGHTS TO REMAIN.



**SCHEESER
BUCKLEY
MAYFIELD**
1540 CORPORATE WOODS PARKWAY
UNIONTOWN, OH 44685
330-526-2700
sbmce.com



YORK RD. NORTH ROYALTON, OHIO BASEBALL FIELD LIGHTING UPGRADE PHASE 4

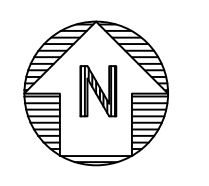
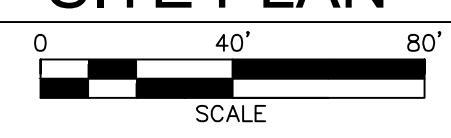
REVISIONS:

DATE: 3/3/23
DRAWN BY: G.W.J.
CHECKED BY: T.M.M.
JOB NO.: 23022

NEW WORK - SITE PLAN - ELECTRICAL

E3

NEW WORK - SITE PLAN - ELECTRICAL



Drawing = M:\2023\23022\Design\Elec\23022.E3 - NEW_OVERALL SITE PLAN - ELEC.dwg Tab = E3 Username = schwabenc Date = Feb 21, 2023 - 12:57pm