

CITY OF HIGHLAND HEIGHTS

CAMPBELL COUNTY, KENTUCKY

ROSE AVENUE ROADWAY IMPROVEMENTS

231713

CITY OF HIGHLAND HEIGHTS OFFICIALS

MAYOR
GREG MEYERS

CITY CLERK
JEANNE PETTIT

CITY ADMINISTRATOR
MICHAEL GIFFEN

CITY COUNCIL MEMBERS
DEB BALL

R. ALEX BRAMEL

JOHN BRAUN

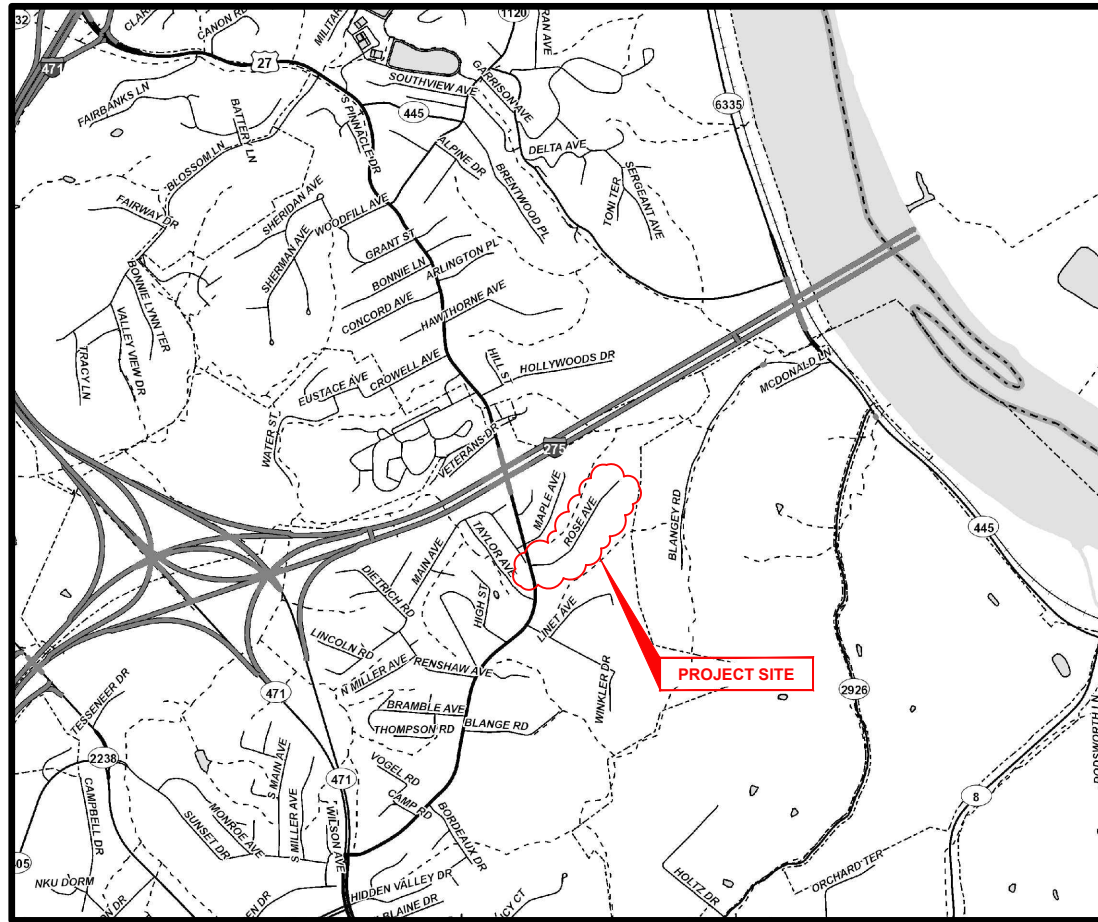
GARY CHINN

RENE HEINRICH

JOHN HOFFERT

PUBLIC WORKS DIRECTOR
STEVE LEHMAN

INDEX OF SHEETS		
NO.	DWG NAME	SHEET NAME
1	TTL	TITLE SHEET
2	NOTES	NOTES & LEGEND
3	DTL-01	DETAIL SHEET 1
4	DTL-02	DETAIL SHEET 2
5	PLAN-01	PLAN SHEET 1 (STA. 10+00 TO STA. 19+00)
6	PLAN-02	PLAN SHEET 2 (STA. 19+00 TO STA. 26+78)
7	GRADE	GRADE ADJUSTMENT PLAN



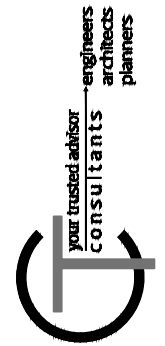
VICINITY MAP

K.T.C SPECIFICATIONS

THE LATEST STANDARD SPECIFICATIONS OF THE KENTUCKY TRANSPORTATION CABINET, INCLUDING CHANGES AND SUPPLEMENTAL SPECIFICATIONS THERETO.

SOURCE OF BOUNDARY INFORMATION

THE BOUNDARY INFORMATION SHOWN ON THESE PLANS IS BASED UPON CAMPBELL COUNTY G.I.S. MAPPING AND DOES NOT REPRESENT AN ACTUAL FIELD BOUNDARY SURVEY BY CT CONSULTANTS, INC.



ISSUED FOR:	BID NO.	DATE
ISSUE DATE: 03/07/2024		
SCALE: AS SHOWN		
DESIGNED BY: RSEL		
DRAWN BY: RSEL		
CHECKED BY: FTWE		

ROSE AVENUE ROADWAY IMPROVEMENTS
CITY OF HIGHLAND HEIGHTS
- CAMPBELL COUNTY, KY -

TITLE SHEET

PROJECT NO.	231713
DISCIPLINE	CIVIL
SHEET NAME	TTL
SHEET	1
OF	7

ROBERT K. SEITZINGER

P.E. #33805



GENERAL NOTES

- ALL CONSTRUCTION SHALL CONFORM TO THESE PLANS AND SPECIFICATIONS, THE LATEST EDITION OF **THE CITY OF HIGHLAND HEIGHTS SUBDIVISION REGULATIONS AND THE KENTUCKY DEPARTMENT OF HIGHWAYS STANDARD SPECIFICATIONS FOR ROAD AND BRIDGE CONSTRUCTION.**
- EXPANSION MATERIAL SHALL BE FLEXIBLE FOAM MATERIAL, SUCH AS CERAMAR BY W. R. MEADOWS OR APPROVED EQUAL, INSTALLED IN AREAS OF CONCRETE WALK, DRIVES OR CURB/GUTTER ONLY AT THE FOLLOWING:
 - AT ALL FIXED OBJECTS (I.E. UTILITY COVERS, VALVES, MANHOLES, ETC.)
 - AT ALL RIGID STRUCTURES (I.E. DRIVES, CURBS, STEPS, ETC.) PAYMENT FOR THIS ITEM AND ZIP STRIPS INCLUDED IN THE PERTINENT CONCRETE PAVEMENT UNIT PRICE.
 - AT ALL STREET INTERSECTIONS AT THE POINT OF CURVATURE OF THE TURNING RADI ENTERING THE INTERSECTION.
 - NO CONCRETE SHALL BE LEFT ABOVE THE EXPANSION MATERIAL OR ACROSS THE JOINT AT ANY POINT. ANY CONCRETE SPANNING THE ENDS OF THE JOINT NEXT TO THE FORMS SHALL BE CAREFULLY CUT AWAY AFTER THE FORMS ARE REMOVED. BEFORE THE PAVEMENT IS OPENED TO TRAFFIC, THE GROOVE ABOVE THE EXPANSION JOINT MATERIAL SHALL BE CLEANED AND SEALED WITH JOINT SEALING MATERIAL.
- NKWD WILL BE COMPLETING A WATER MAIN REPLACEMENT PROJECT ON ALONG ROSE AVENUE, IT IS ANTICIPATED THAT UTILITY WORK WILL BEGIN IN MAY 2024. ROADWAY WORK SHALL NOT BE STARTED UNTIL NKWD WORK WITH THE ROADWAY HAS BEEN COMPLETED. ROADWAY REPLACEMENT PROJECT MAY NOT BEGIN BEFORE JULY 01, 2024 AND SHALL BE SUBSTANTIALLY COMPLETE NO LATER THAN OCTOBER 01, 2024.**
- DOWNSPOUT AND UNDERDRAIN CONSTRUCTION SHALL MEET THESE AND THE LATEST SPECIFICATION OF **THE CITY OF HIGHLAND HEIGHTS SUBDIVISION REGULATIONS, SD-1 REGULATIONS** AND STANDARD DRAWINGS, AND DETAILS SHOWN ON THIS PLAN. BEDDING, BACKFILLING, JOINTS, EXCAVATION AND INSTALLATION SHALL BE INCLUDED IN THE COST PER FOOT OF PIPE. STORM SEWER, DOWNSPOUT AND UNDERDRAIN PIPE MATERIAL SHALL HAVE A MANNING'S "N" VALUE OF 0.013 OR LESS (UNLESS OTHERWISE SHOWN) AND BE RIGID / SMOOTH INTERIOR WALLED PVC SDR-35 PIPE, RIBBED PVC PIPE, A-2000 PVC PIPE, UNLESS OTHERWISE SHOWN.
- ALL DISTURBED AREAS ARE TO BE RESTORED (SEEDED AND MULCHED) BY THE CONTRACTOR AND SHALL PROCEED WITH JOB PROGRESSION. THE CONTRACTOR SHALL ALSO BE RESPONSIBLE FOR REMOVING ANY EXCESS MATERIALS AT THE SITE AND MAINTAINING ALL SEEDED AND MULCHED AREAS UNTIL PROJECT COMPLETION AND FINAL INSPECTION PER **KDOT SPEC. 212.** A RESIDENTIAL YARD SHALL BE RESTORED WITHIN TWENTY-ONE (21) DAYS AFTER CONSTRUCTION.
- ALL APPLICABLE RECOMMENDATIONS IN **KENTUCKY'S BEST MANAGEMENT PRACTICES MANUAL** SHALL BE FOLLOWED BY THE CONTRACTOR, INCLUDING SEEDING OF DISTURBED GROUND.
- RIGHT-OF-WAY AND PROPERTY LINES SHOWN ARE PLOTTED FROM **CAMPBELL COUNTY G.I.S. MAPPING** AND ARE APPROXIMATE AND NOT THE RESULT OF A FIELD BOUNDARY SURVEY.
- THE CONTRACTOR SHALL LIMIT THEIR WORK AREA TO THE EASEMENTS AND RIGHTS-OF-WAY SHOWN ON THESE PLANS UNLESS WRITTEN PERMISSION IS GIVEN BY THE PROPERTY OWNER AND APPROVED BY THE **CITY OF HIGHLAND HEIGHTS.**
- ALL OSHA, STATE AND LOCAL SAFETY REGULATIONS SHALL BE FOLLOWED DURING CONSTRUCTION.
- RELOCATION OR REINSTALLATION OF EXISTING MAIL BOXES, FENCES, PRIVATE LANDSCAPE LIGHTS, PRIVATE SIGNS, STREET SIGNS, RESTORATION OF LANDSCAPING AND TREATMENT OF EXISTING WALLS WHERE A PORTION HAS BEEN REMOVED SHALL BE INCIDENTAL TO CLEARING AND GRUBBING.
- NO CONSTRUCTION SHALL COMMENCE UNTIL ALL **CAMPBELL COUNTY AND THE CITY OF HIGHLAND HEIGHTS** PERMITS HAVE BEEN ISSUED AS REQUIRE
- THE CONTRACTOR SHALL COORDINATE ALL WORK WITHIN THE PUBLIC RIGHT OF WAY WITH THE **CITY OF HIGHLAND HEIGHTS.** LOCAL TRAFFIC MUST BE MAINTAINED AT ALL TIMES DURING CONSTRUCTION UNLESS OTHERWISE NOTED IN THESE PLANS.
- ADDITIONAL BMP'S AND EROSION AND SEDIMENT CONTROL MEASURES MAY BE REQUIRED AS DEEMED NECESSARY. ALL COST FOR ABOVE SHALL BE INCLUDED IN LUMP SUM BID FOR EROSION CONTROL AND WATER POLLUTION CONTROL.
- LIMITS OF DRIVEWAY APRON & SIDEWALK REPLACEMENT TO BE MARKED IN THE FIELD BY THE ENGINEER. ADDITIONAL DRIVEWAY & SIDEWALK REPLACEMENTS, NOT SHOWN ON THE PLANS MAY BE REQUIRED BY THE ENGINEER.

UTILITY NOTES

- THIS PLAN SHOWS THE APPROXIMATE LOCATION OF UNDERGROUND UTILITIES (GAS, WATER, STORM SEWER, SANITARY SEWER, TELEPHONE, ELECTRIC, ETC.). THE PREPARER DOES NOT GUARANTEE THEIR ACCURACY OR CORRECTNESS. THE INFORMATION PROVIDED SHALL BE FIELD VERIFIED PRIOR TO CONSTRUCTION. THE CONTRACTOR SHALL BE RESPONSIBLE FOR MAINTAINING THE UTILITY AS WELL AS THE SERVICE LATERALS AT ALL TIMES DURING CONSTRUCTION. THE CONTRACTOR SHALL PRACTICE CARE DURING THE GRADING AND TRENCH EXCAVATION AND SHALL BE RESPONSIBLE FOR REPLACING ANY SERVICES THAT ARE DAMAGED DURING CONSTRUCTION AT THEIR EXPENSE.
- PRIOR TO ANY EXCAVATION OVER AN EXISTING UTILITY LINE OR SERVICE, CONTRACTOR SHALL HAND EXCAVATE TO EXPOSE THE UTILITY AND DETERMINE LOCATION AND DEPTH. NOTIFY ENGINEER IMMEDIATELY OF ANY CONFLICTS.
- TOPS OF EXISTING AND PROPOSED CASTING ELEVATIONS ARE SUBJECT TO FINAL ADJUSTMENTS AS APPROVED BY THE ENGINEER AND REQUIREMENTS OF UTILITY OWNER. THIS WORK WILL BE INCIDENTAL TO THE CONTRACT.
- FORTY-EIGHT (48) HOURS BEFORE EXCAVATION IS TO COMMENCE, THE CONTRACTOR SHALL NOTIFY THE FOLLOWING AGENCIES: THE KENTUCKY UTILITY PROTECTION SERVICE AND ALL OTHER UTILITIES THAT MAY HAVE UNDERGROUND UTILITIES INVOLVING THIS PROJECT AND ARE NON-MEMBERS OF KENTUCKY UNDERGROUND PROTECTION.

MAINTENANCE OF TRAFFIC NOTES

- ALL MAINTENANCE OF TRAFFIC PROCEDURES SHALL MEET THE REQUIREMENT OF THE MANUAL OF UNIFORM TRAFFIC CONTROL DEVICES AND SECTION 112 OF KTC STANDARD SPECIFICATIONS. THE CONTRACTOR SHALL MAINTAIN ACCESS TO LOCAL TRAFFIC (ACCESS TO RESIDENCES WITHIN CONSTRUCTION LIMITS) AT ALL TIMES. THE CONTRACTOR SHALL PROVIDE SUFFICIENT SIGN, WARNING LIGHTS, BARRICADES, OR OTHER NECESSARY DEVICES MAKE THE SITE SAFE TO THE TRAVELING PUBLIC.
- IT SHALL BE THE CONTRACTOR'S RESPONSIBILITY TO SUBMIT TO THE ENGINEER AND THE OWNER A TRAFFIC CONTROL PLAN FOR THIS PROJECT.
- PRIOR TO ANY CONSTRUCTION, THE CONTRACTOR SHALL NOTIFY THE CITY OF HIGHLAND HEIGHTS, AS WELL AS THEIR POLICE AND FIRE POLICE DEPARTMENTS. AT ALL TIMES, EMERGENCY VEHICLES SHALL BE GIVEN ACCESS.
- RESIDENTS OF THE PROJECT AREA SHALL BE ALLOWED ACCESS TO THEIR PROPERTY AT ALL TIMES.
- EACH DRIVEWAY SHALL BE ACCESSIBLE WHENEVER POSSIBLE. WHEN PORTLAND CEMENT CONCRETE CONSTRUCTION AFFECTS A DRIVEWAY, THE CONTRACTOR SHALL NOTIFY THE AFFECTED OWNERS 24 HOURS IN ADVANCE AND ADVISE THEM TO FIND ALTERNATIVE PARKING FOR A PERIOD OF AT LEAST 10 CALENDAR DAYS AFTER THE POUR. ALTERNATIVE PARKING SHALL INCLUDE "ON STREET" PARKING WITH ACCESS TO THE PROPERTY. TEMPORARY SIDEWALKS, ETC. WILL BE NECESSARY TO PREVENT PERSONS FROM WALKING IN MUD IN ORDER TO ENTER THEIR PROPERTY. TEMPORARY BRIDGES, RAILINGS ETC. WILL BECOME NECESSARY IN ORDER TO CROSS FORMED CURB LINES, EXCAVATED AREAS BEHIND CURB LINES AND WALKWAYS, ETC.

SYMBOL LEGEND

EXISTING GAS LINE
 GS GS GS GS GS GS
 GS GS GS GS GS GS
 E-UG // E-OH
 C-UG // C-OH
 T-UG // T-OH
 W W W W W W
 WS WS WS WS WS WS
 RD RD RD RD RD RD
 S S S S S S
 FM FM FM FM FM FM
 FO FO FO FO FO FO
 X X X X X X X X
 -650-
 -648-
 EX RW
 PROPOSED GAS LINE
 GS GS GS GS GS GS
 GS GS GS GS GS GS
 E-UG // E-OH
 C-UG // C-OH
 T-UG // T-OH
 W W W W W W
 WS WS WS WS WS WS
 UD UD UD UD UD UD
 UD/DSC UD/DSC UD/DSC UD/DSC UD/DSC
 S S S S S S
 FM FM FM FM FM FM
 FO FO FO FO FO FO
 X X X X X X X X
 -650-
 -648-
 PROPOSED FLAGPOLE
 PROPOSED MAILBOX
 PROPOSED SIGN
 PROPOSED CABLE PEDESTAL
 PROPOSED ELECTRIC PEDESTAL
 PROPOSED PULL BOX
 PROPOSED GROUND LIGHT
 PROPOSED LIGHT POLE
 PROPOSED ELECTRIC METER
 PROPOSED ELECTRIC MANHOLE
 PROPOSED GAS METER
 PROPOSED GAS VALVE
 PROPOSED GAS BOX
 PROPOSED UTILITY POLE
 PROPOSED GUY WIRE / ANCHOR
 PROPOSED SANITARY MANHOLE
 PROPOSED SANITARY CLEANOUT
 PROPOSED STORM MANHOLE
 PROPOSED SINGLE / DOUBLE CURB INLET
 PROPOSED CATCH BASIN
 PROPOSED STORM CLEANOUT
 PROPOSED TELEPHONE MANHOLE
 PROPOSED TELEPHONE PEDESTAL
 PROPOSED FIRE HYDRANT
 PROPOSED WATER METER
 PROPOSED WATER VALVE
 REMOVE EXISTING BUSH / TREE
 PROPOSED SLOPE DIRECTION
 EXISTING SURVEY BENCHMARK
 TEST BORING LOCATION

EROSION CONTROL LEGEND

IP INLET PROTECTION (SEE DETAIL)

STORM & SANITARY NOTES

- ALL STORM AND SANITARY ITEMS SHALL BE IN ACCORDANCE WITH THE LATEST SPECIFICATIONS AND DETAILS FROM SD1. CONCRETE AND METAL PIPE MATERIALS SHALL NOT BE USED UNLESS OTHERWISE SPECIFIED ON THESE PLANS.
- CONTRACTOR SHALL BE REQUIRED TO MAINTAIN STORM AND SANITARY SEWER FLOW THROUGHOUT THE PROJECT, FOR THE DURATION OF CONSTRUCTION. ALL COST FOR THE ABOVE SHALL BE INCIDENTAL TO THE CONTRACT.
- IF REQUIRED, CONTRACTOR SHALL BE RESPONSIBLE FOR CONTACTING AND SCHEDULING STORM AND SANITARY SEWER INSPECTIONS AS SET OUT IN THE PRECONSTRUCTION MEETING.
- CONNECTIONS INTO EXISTING OR PROPOSED STORM OR SANITARY SEWER STRUCTURES OR PIPES SHALL BE COMPLETED BY A CERTIFIED TAPPER BY **SD1.**

WATER NOTES

- ALL WORK RELATING TO WATER MAINS OR WATER SERVICE LINES SHALL BE COMPLETED IN ACCORDANCE WITH THE RULES AND REGULATIONS OF THE **NORTHERN KENTUCKY WATER DISTRICT (NKWD).**
- CONTRACTOR MAY NOT USE WATER FROM FIRE HYDRANTS WITHOUT PRIOR PERMISSION FROM **NKWD**

GAS NOTES

- ALL WORK RELATING TO GAS MAINS OR GAS SERVICE LINES SHALL BE COMPLETED IN ACCORDANCE WITH THE RULES AND REGULATIONS OF THE **DUKE ENERGY**

ELECTRIC NOTES

- ALL WORK RELATING TO ELECTRIC LINES SHALL BE COMPLETED IN ACCORDANCE WITH THE RULES AND REGULATIONS OF THE **DUKE ENERGY**

HATCH LEGEND

MILL & OVERLAY
 - SEE TYPICAL SECTIONS

4" CONCRETE SIDEWALK REPLACEMENT
 - SEE DETAIL SHEET

6" CONCRETE DRIVEWAY REPLACEMENT
 - SEE DETAIL SHEET

REMOVE EXISTING ASPHALT PAVEMENT AND REPLACE WITH NEW 8" CONCRETE PAVEMENT WITH INTEGRAL ROLLED CURB
 - SEE DETAIL SHEET

ROSE AVENUE ROADWAY IMPROVEMENTS
 CITY OF HIGHLAND HEIGHTS
 - CAMPBELL COUNTY, KY -

NOTES & LEGEND

PROJECT NO. **231713**

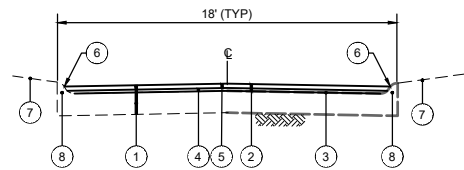
DISCIPLINE **CIVIL**

SHEET NAME **NOTES**

SHEET **2** OF **7**

your trusted advisor
consultants
 engineers
 architects
 planners

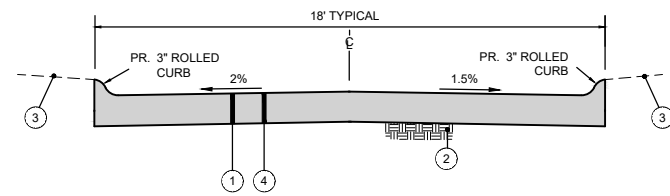
DATE	REVISION	NO	BID	ISSUED FOR:	ISSUE DATE:	SCALE:	DESIGNED BY:	DRAWN BY:	CHECKED BY:
					03/07/2024	AS SHOWN	RSEL	RSEL	FTWE



- 1 EXISTING CONCRETE PAVEMENT w/ ASPHALT OVERLAY
- 2 ITEM 408 - ASPHALT MILLING (2" TYP.)
- 3 ITEM 406 - TACK COAT @ 0.1 GAL/SY (INCIDENTAL TO ITEM 403)
- 4 ITEM 402/403 - 0.75" ASPHALT LEVELING (ADDITIONAL THICKNESS TO BE ADDED AT THE END OF THE STREET TO ADDRESS DRAINAGE AND SHALL BE PAID FOR UNDER SEPARATE BID ITEM).
- 5 ITEM 402/403 - 1.25" ASPHALT PAVEMENT SURFACE WITH ARAMID FIBER REINFORCEMENT (FORTA-FI OR ACE FIBER)
- 6 APPLY HOT ASPHALT SEALER WHERE ASPHALT MEETS CONCRETE CURB (INCIDENTAL TO ITEM 403)
- 7 DO NOT DISTURB YARD AREA, UNLESS CURB IS BEING REPLACED.
- 8 ITEM SPL * - ROLLED CURB REPLACEMENT PER DETAIL

*CONTINGENCY ITEM TO BE USED ONLY AT THE ENGINEER'S DIRECTION

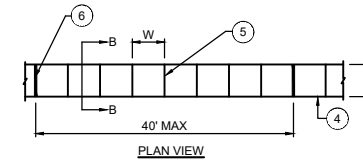
TYPICAL PAVEMENT RESURFACING SECTION
CONCRETE PAVT w/ OVERLAY ROLLED CURB
 N.T.S.



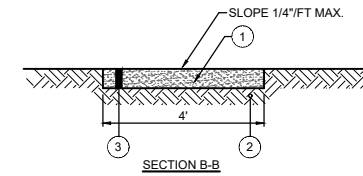
CONCRETE PAVEMENT REPLACEMENT TYPICAL SECTION
WITHOUT STONE BASE
 N.T.S.



- 1 ITEM 203 - REMOVE EXISTING PAVEMENT.
- 2 ITEM 207 - SUBGRADE RESHAPING & COMPACTING.
- 3 ITEM SPL - YARD RESTORATION (4" TOPSOIL, SEED AND MULCH) - KEEP TO A MINIMUM.
- 4 ITEM 505 - 8" PORTLAND CEMENT CONCRETE PAVEMENT WITH 3" ROLLED CURB.



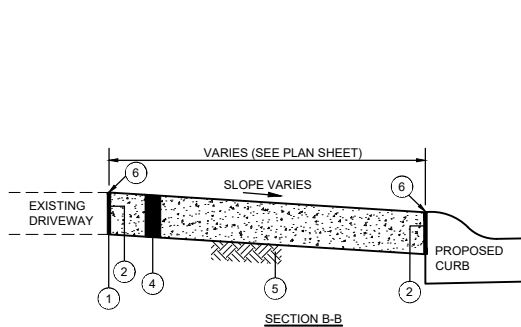
PLAN VIEW



SECTION B-B

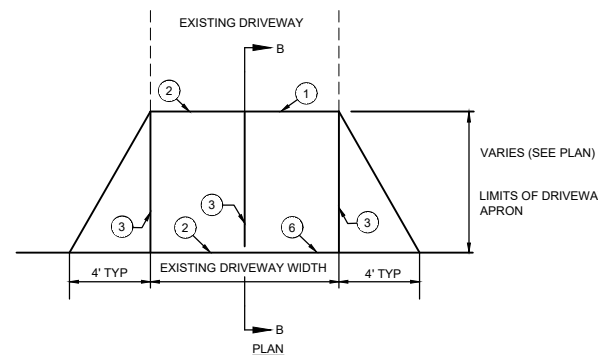
CONCRETE SIDEWALK REPLACEMENT DETAIL
 N.T.S.

- 1 SAWCUT AND REMOVE EXISTING SIDEWALK
- 2 ITEM 207 - COMPACTED SUBGRADE (INCIDENTAL TO CONCRETE SIDEWALK)
- 3 ITEM SPL - 4" CONCRETE SIDEWALK PER SUBDIVISION REGULATIONS
- 4 TOOLED EDGE
- 5 TOOLED CONTRACTION JOINT
- 6 1/2" PREMOULDED EXPANSION JOINT



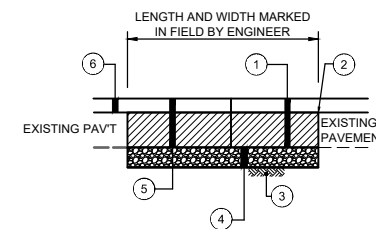
- 1 SAWCUT AT NEAREST JOINT AND REMOVE EXISTING CONCRETE PAVEMENT (INCIDENTAL TO ITEM 505)
- 2 1" PREFORMED EXPANSION JOINT MATERIAL (FLEXIBLE FOAM-CERAMAR BY W.R. MEADOWS OR APPROVED EQUAL) - INCIDENTAL TO DRIVEWAY REPLACEMENT
- 3 TOOLED JOINT
- 4 ITEM 505 - 6" CONCRETE DRIVEWAY/APRON
- 5 ITEM 207 - COMPACTED SUBGRADE (INCIDENTAL TO ITEM 505 - 6" CONCRETE DRIVEWAY/APRON)
- 6 SEAL JOINT WITH GRAY SELF LEVELING SEALANT (SIKA FLEX OR APPROVED EQUAL)

CONCRETE DRIVEWAY REPLACEMENT
(NO SIDEWALK)
 N.T.S.



NOTE:

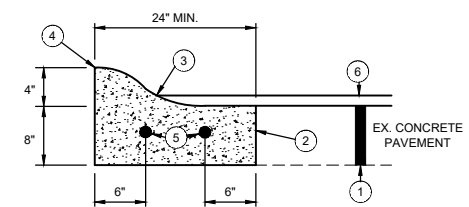
- 1. ANY YARD AREA DISTURBED BY THE CONSTRUCTION OF THE DRIVEWAY APRON SHALL BE RESTORED WITH TOPSOIL, SEED AND MULCH (INCIDENTAL TO CONCRETE DRIVEWAY APRON REPLACEMENT).
- 2. ALL EXCAVATION REQUIRED FOR THE PLACEMENT OF THE PROPOSED DRIVEWAY SHALL BE INCIDENTAL TO CONCRETE DRIVEWAY REPLACEMENT BID ITEM.



FULL DEPTH PAVEMENT REPAIR (ASPHALT)
 N.T.S.

- 1 EX. CONCRETE, ASPHALT, GRAVEL OR EARTEN MATERIAL TO BE REMOVED
- 2 FULL DEPTH SAWCUT ALL SIDES
- 3 ITEM 207 - COMPACTED SUBGRADE (INCIDENTAL)
- 4 ITEM 302 - 6" DGA FOR SUBGRADE REPAIR (SEPARATE BID ITEM). TO BE USED AS DIRECTED BY THE ENGINEER. UNIT PRICE BID INCLUDES DGA BASE, REMOVAL AND DISPOSAL OF EXISTING MATERIAL AND COMPACTION OF SUBGRADE
- 5 ITEM 402/403 - BITUMINOUS CONCRETE BASE (9" TOTAL THICKNESS)
- 6 PAVEMENT RESURFACING PER TYPICAL SECTION (SEPARATE PAY ITEM)

* NOTE: THIS IS A CONTINGENCY ITEM TO BE USED ONLY AT THE DIRECTION OF THE ENGINEER. LIMITS TO BE MARKED IN THE FIELD BY THE ENGINEER

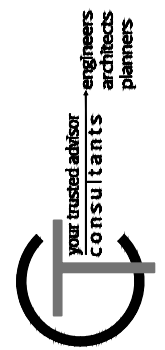


- 1 EXISTING CONCRETE PAVEMENT (SEE TYPICAL SECTIONS)
- 2 SAWCUT AND REMOVE EXISTING CURB (INCIDENTAL)
- 3 APPLY ASPHALT SEALER WHERE ASPHALT MEETS CURB (INCIDENTAL TO ITEM 402)
- 4 TOP/EDGE OF REPLACEMENT CURB TO MATCH LINE & GRADE OF ADJACENT EXISTING CURB
- 5 1/2" DIA. DOWELS 18" LONG - DRILL 9" MIN. INTO EXIST. CURB
- 6 ASPHALT RESURFACING (SEE TYPICAL SECTIONS)

* NOTE: THIS IS A CONTINGENCY ITEM TO BE USED ONLY AT THE DIRECTION OF THE ENGINEER. LIMITS TO BE MARKED IN THE FIELD BY THE ENGINEER.

NOTE: CONTRACTOR SHALL FILL BEHIND CURB TO THE TOP OF THE CURB w/ TOPSOIL AND RESTORE YARD w/ SEED/MULCH. THE COST FOR TOPSOIL, SEED/MULCH SHALL BE INCIDENTAL TO THE UNIT PRICE BID FOR ROLLED CURB REPLACEMENT.

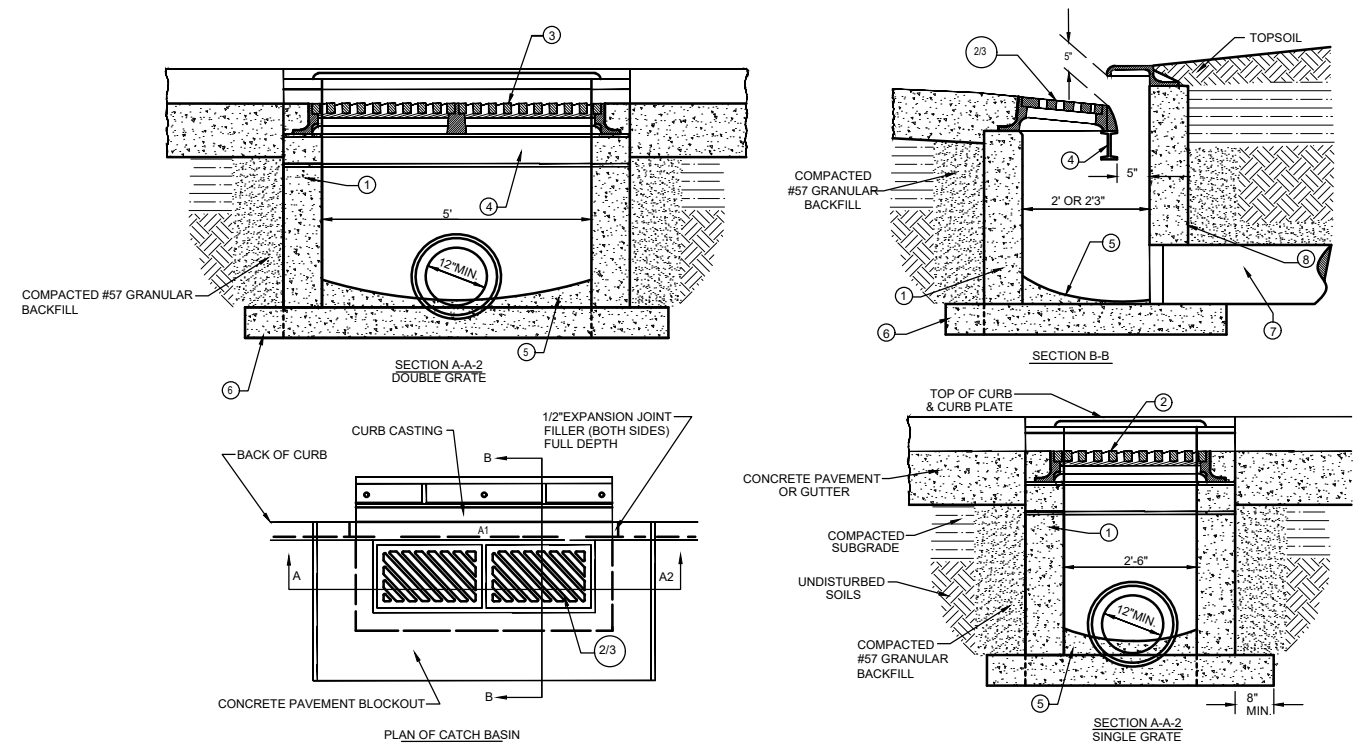
ROLLED CURB REPLACEMENT (ON CONCRETE STREET WITH ASPHALT OVERLAY)
 N.T.S.



ISSUED FOR:	BID NO.	REVISION	DATE
03/07/2024			
AS SHOWN			
RSEL			
RSEL			
FTWE			

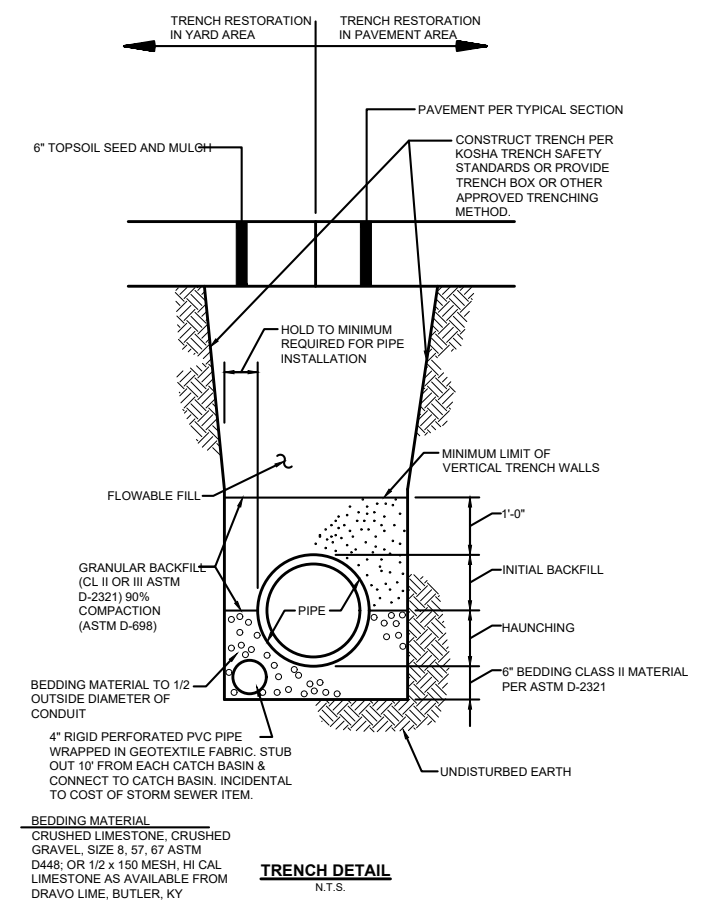
ROSE AVENUE ROADWAY IMPROVEMENTS
CITY OF HIGHLAND HEIGHTS
- CAMPBELL COUNTY, KY -

PROJECT NO.	231713
DISCIPLINE	CIVIL
SHEET NAME	DTL-01
SHEET	3
OF	7



STANDARD CURB INLET
N.T.S. REFER TO SD1 SPEC. 02630 FOR ADDITIONAL DETAILS

- | | |
|---|--|
| <p>① CONCRETE BRICK OR SLAB BLOCK MAY BE USED IN PLACE OF PRECAST OR CAST IN PLACE CONCRETE. BLOCK OR BRICK SIDEWALLS SHALL BE 8" NOMINAL THICKNESS W/ HORIZONTAL REINFORCEMENT EVERY 16 INCHES. PARGE WITH 1/2" MORTAR, INSIDE AND OUT.</p> <p>② SINGLE INLET: FRAME, GRATE AND CURB PLATE - NEENAH R-3289-HV OR APPROVED EQUAL.</p> <p>③ DOUBLE INLET: FRAME, GRATE AND CURB PLATE - NEENAH R-3288-HV2 OR APPROVED EQUAL.</p> <p>④ 5-6 X 12.5 X 6" STEEL BEAM (USE WITH SEPERATE OR BOLTED INLETS).</p> | <p>⑤ 4" MIN. DEPTH 4000 PSI AE CONCRETE WITH SCRIBED INVERT.</p> <p>⑥ 6" MIN. DEPTH 4000 PSI AE CONCRETE EXTENDED MIN. 8" BEYOND EXTERIOR OF BOX.</p> <p>⑦ 12" MINIMUM DIAMETER PIPE.</p> <p>⑧ SEAL ALL LIFTING HOLES AND JOINTS (INSIDE & OUT).</p> |
|---|--|



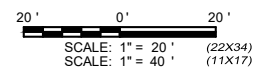
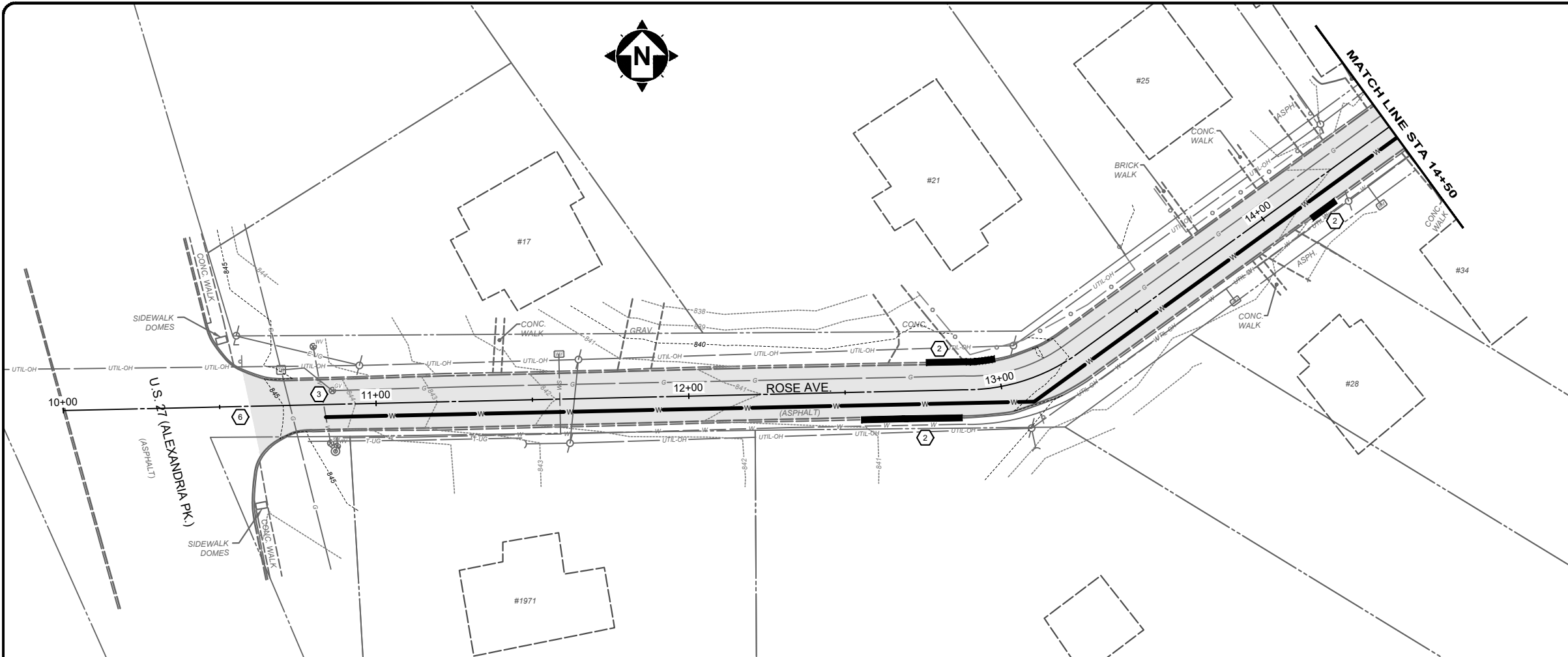
TRENCH DETAIL
N.T.S.

NO	REVISION	DATE

ISSUED FOR:	BID NO:	
ISSUE DATE:		
SCALE:	AS SHOWN	
DESIGNED BY:	RSEI	
DRAWN BY:	RSEI	
CHECKED BY:	FTWE	

PROJECT NO.	
231713	
DISCIPLINE	
CIVIL	
SHEET NAME	
DTL-02	
SHEET	OF
4	7

ROSE AVENUE ROADWAY
IMPROVEMENTS
 CITY OF HIGHLAND HEIGHTS
 - CAMPBELL COUNTY, KY -
DETAIL SHEET 2



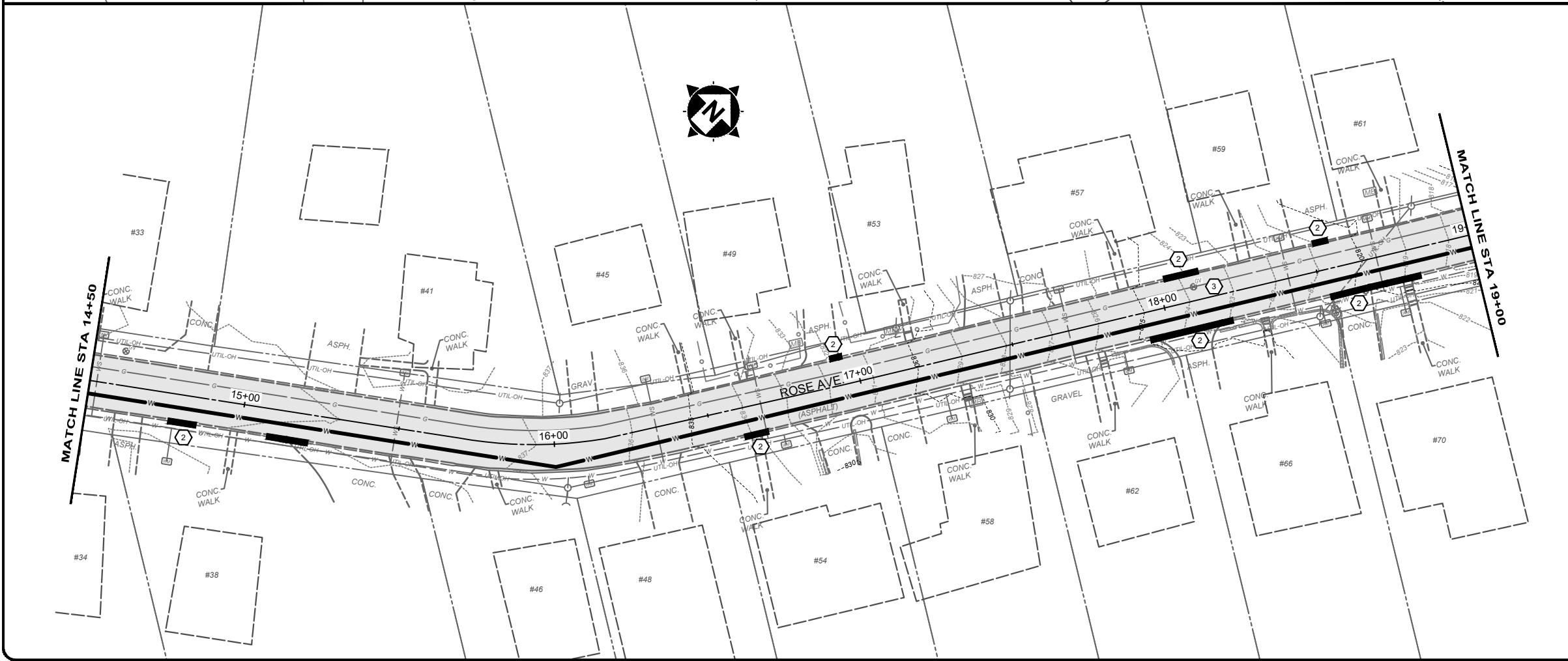
CONSTRUCTION NOTES

- 1 SIDEWALK AND DRIVEWAY REPLACEMENT LIMITS WILL BE MARKED IN THE FIELD BY THE CITY/ENGINEER.
- 2 CURB REPLACEMENT LIMITS WILL MARKED IN THE FIELD BY THE CITY/ENGINEER.
- 3 ADJUST GAS/WATER VALVE/BOX PER DUKE/KNWD REQUIREMENTS
- 4 REMOVE EXISTING STORM INLET AND REPLACE WITH NEW STANDARD DOUBLE GRATE INLET.
- 5 REMOVE EXISTING STORM PIPE AND REPLACE WITH NEW 12" PVC OR HDPE STORM SEWER.
- 6 MATCH EXISTING PAVEMENT
- 7 DEPRESS INTEGRAL ROLLED CURB FOR DRIVEWAY/SIDEWALK

ISSUED FOR:	BID NO.	DATE

REVISION	NO.	DATE

ISSUE DATE:	SCALE:	DESIGNED BY:	DRAWN BY:	CHECKED BY:
03/07/2024	AS SHOWN	RSEL	RSEL	FTWE



HATCH LEGEND

	MILL & OVERLAY - SEE TYPICAL SECTIONS
	4" CONCRETE SIDEWALK REPLACEMENT - SEE DETAIL SHEET
	6" CONCRETE DRIVEWAY REPLACEMENT -SEE DETAIL SHEET
	REMOVE EXISTING ASPHALT PAVEMENT AND REPLACE WITH NEW 8" CONCRETE PAVEMENT WITH INTEGRAL ROLLED CURB -SEE DETAIL SHEET

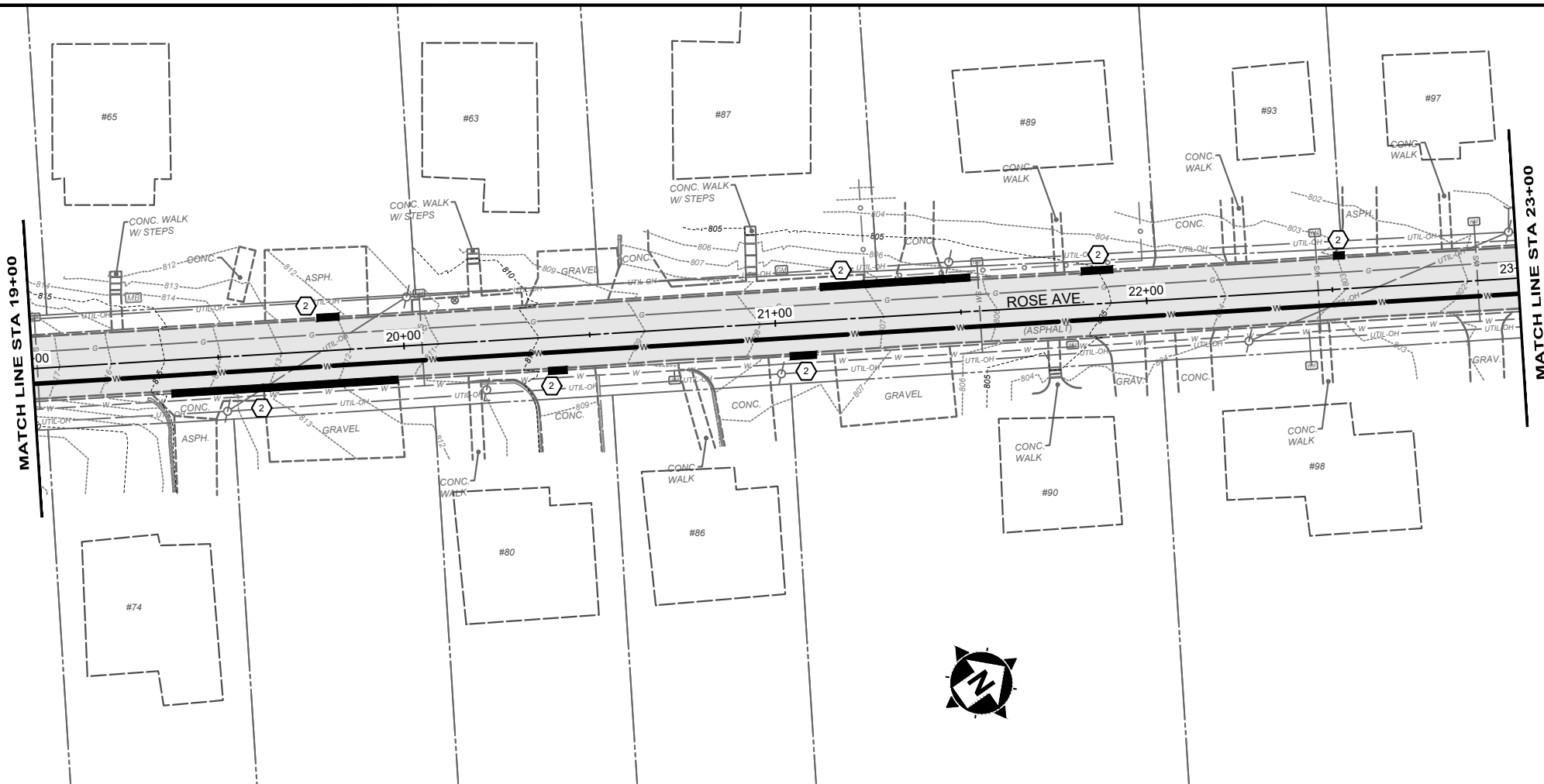
your trusted advisor
consultants

engineers
architects
planners

PROJECT NO.	231713
DISCIPLINE	CIVIL
SHEET NAME	PLAN-01
SHEET	5
OF	7

ROSE AVENUE ROADWAY IMPROVEMENTS
CITY OF HIGHLAND HEIGHTS
- CAMPBELL COUNTY, KY -

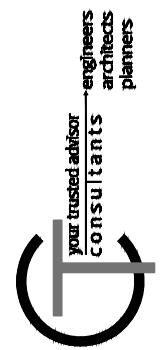
PLAN SHEET 1 (STA. 10+00 TO 19+00)



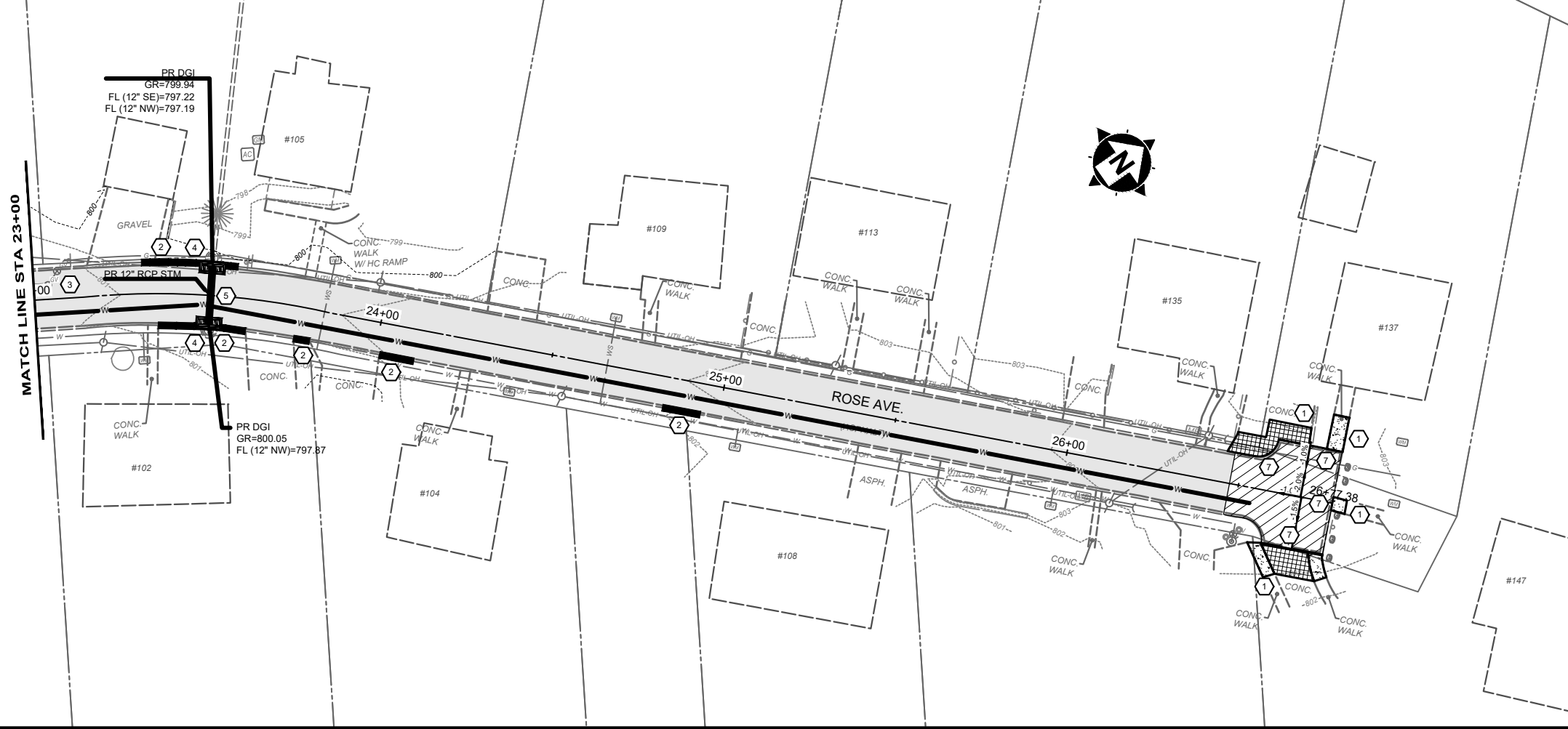
20' 0' 20'
 SCALE: 1" = 20' (22X34)
 SCALE: 1" = 40' (11X17)

CONSTRUCTION NOTES

- 1 SIDEWALK AND DRIVEWAY REPLACEMENT LIMITS WILL BE MARKED IN THE FIELD BY THE CITY/ENGINEER.
- 2 CURB REPLACEMENT LIMITS WILL MARKED IN THE FIELD BY THE CITY/ENGINEER.
- 3 ADJUST GAS/WATER VALVE/BOX PER DUKE/KNWD REQUIREMENTS
- 4 REMOVE EXISTING STORM INLET AND REPLACE WITH NEW STANDARD DOUBLE GRATE INLET.
- 5 REMOVE EXISTING STORM PIPE AND REPLACE WITH NEW 12" PVC OR HDPE STORM SEWER.
- 6 MATCH EXISTING PAVEMENT
- 7 DEPRESS INTEGRAL ROLLED CURB FOR DRIVEWAY/SIDEWALK



ISSUED FOR:	BID NO.	DATE
ISSUE DATE: 03/07/2024		
SCALE: AS SHOWN		
DESIGNED BY: RBEI		
DRAWN BY: RBEI		
CHECKED BY: FTWE		



HATCH LEGEND

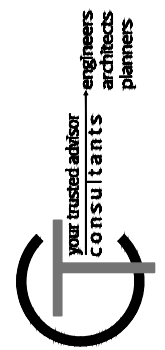
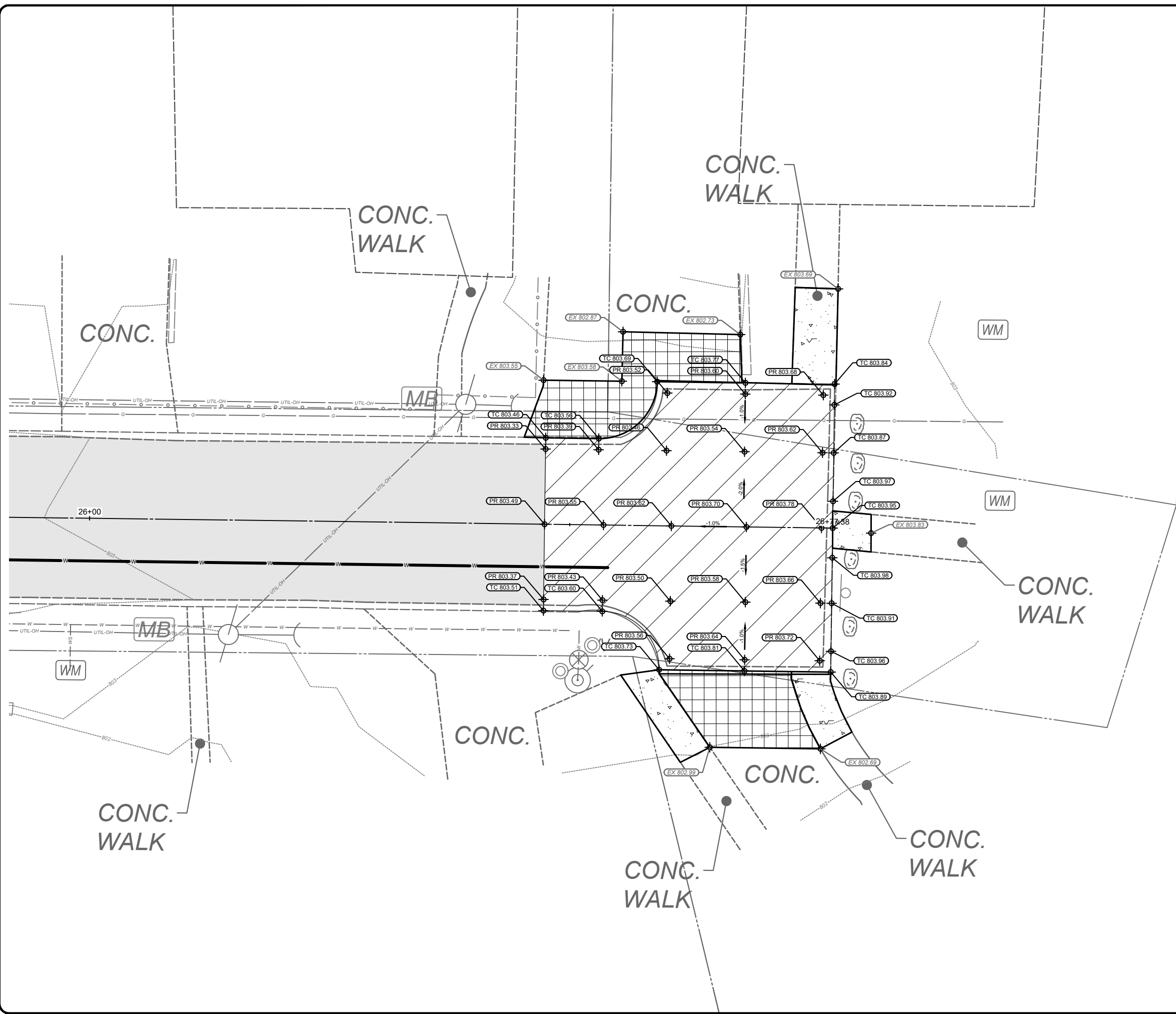
- MILL & OVERLAY - SEE TYPICAL SECTIONS
- 4" CONCRETE SIDEWALK REPLACEMENT - SEE DETAIL SHEET
- 6" CONCRETE DRIVEWAY REPLACEMENT - SEE DETAIL SHEET
- REMOVE EXISTING ASPHALT PAVEMENT AND REPLACE WITH NEW 8" CONCRETE PAVEMENT WITH INTEGRAL ROLLED CURB - SEE DETAIL SHEET

ROSE AVENUE ROADWAY IMPROVEMENTS
 CITY OF HIGHLAND HEIGHTS
 - CAMPBELL COUNTY, KY -
PLAN SHEET 2 (STA. 19+00 TO 26+78)

PROJECT NO.	231713
DISCIPLINE	CIVIL
SHEET NAME	PLAN-02
SHEET	6
OF	7



5' 0' 5'
 SCALE: 1" = 5' (22X34)
 SCALE: 1" = 10' (11X17)



ISSUED FOR:	BID NO.	DATE
ISSUE DATE:		
SCALE:		
DESIGNED BY:		
DRAWN BY:		
CHECKED BY:		

ROSE AVENUE ROADWAY
 IMPROVEMENTS
 CITY OF HIGHLAND HEIGHTS
 - CAMPBELL COUNTY, KY -
 GRADE ADJUSTMENT PLAN

PROJECT NO.	231713
DISCIPLINE	CIVIL
SHEET NAME	GRADE
SHEET	OF
7	7