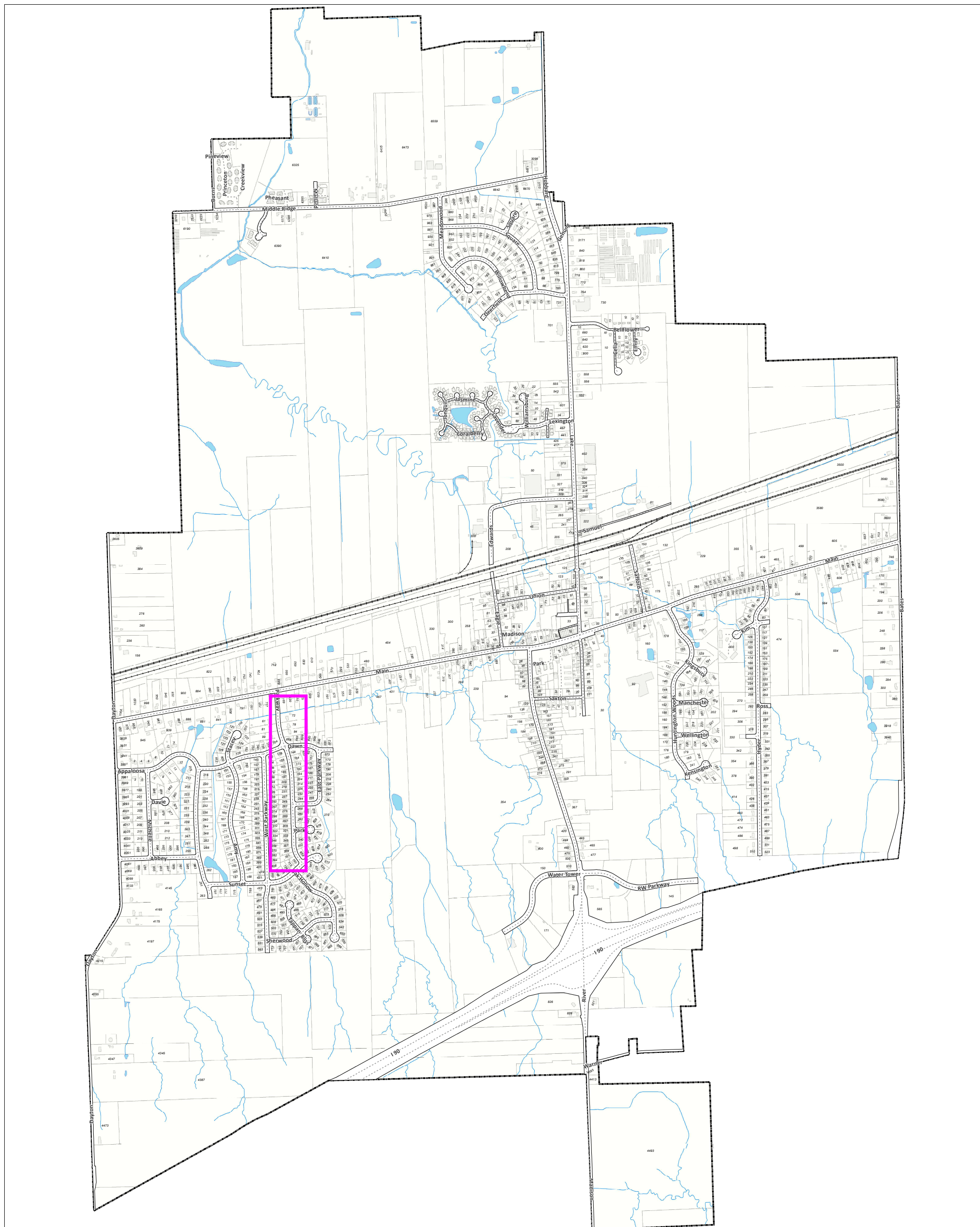
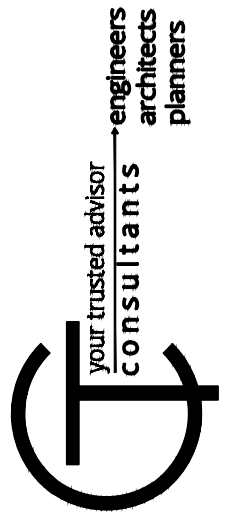
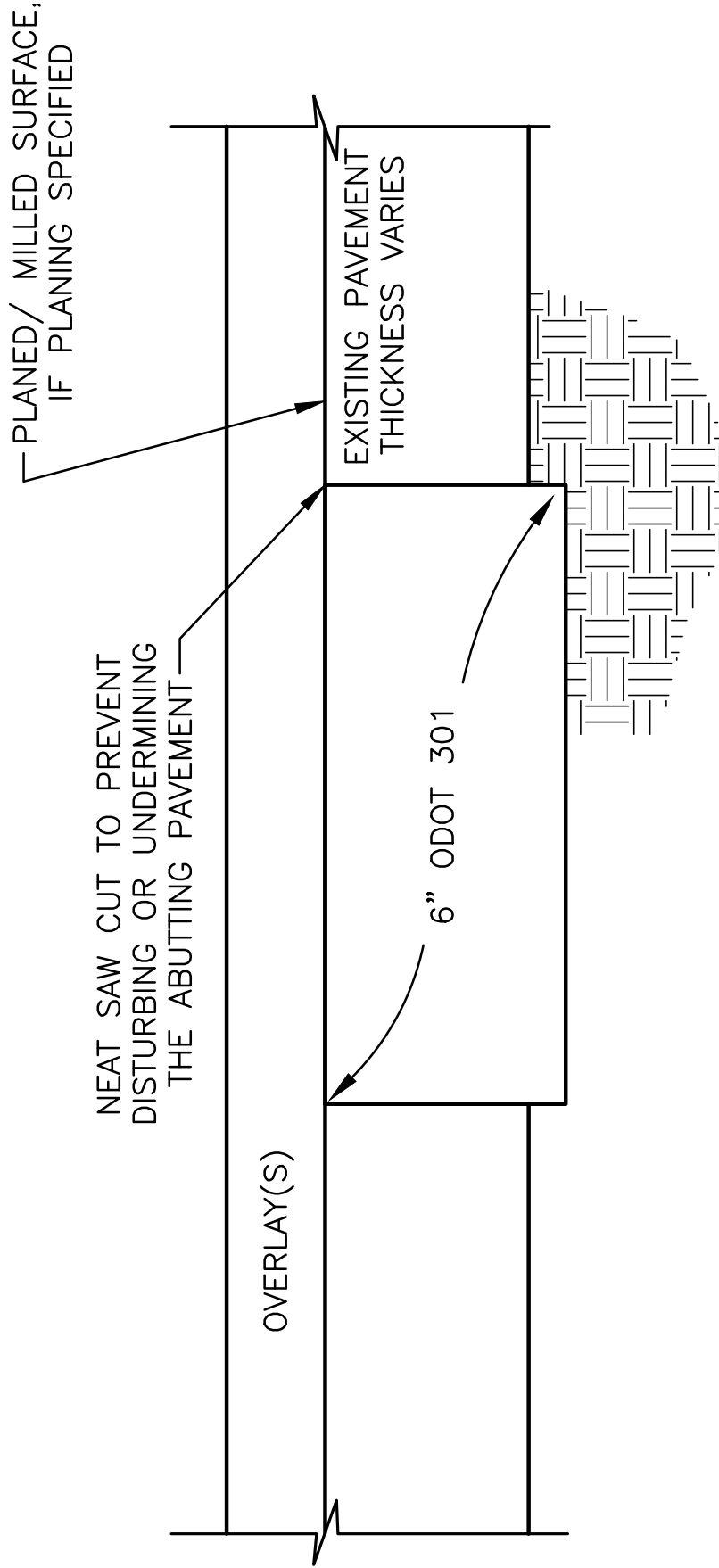

SECTION 9
DETAILED DRAWINGS





253 PAVEMENT REPAIR - 6 INCH

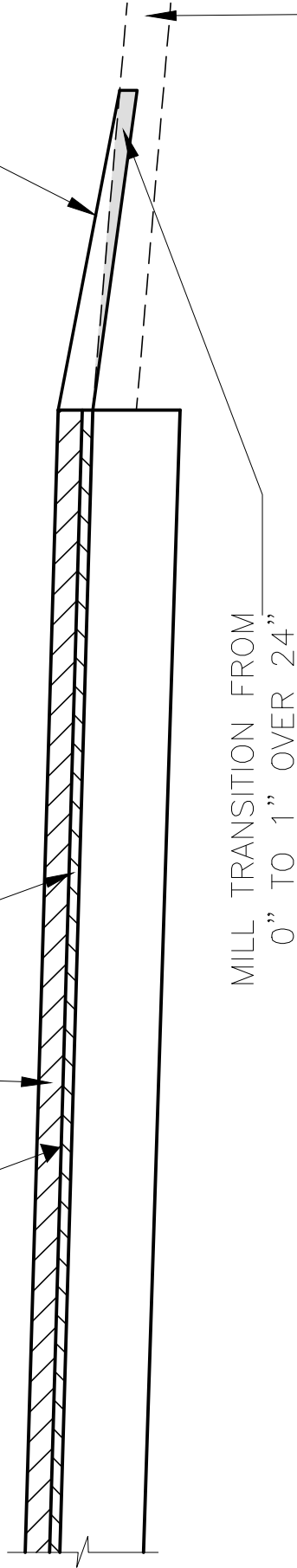
NTS

SINGLE CHIP SEAL AND
0.75" ~ 448-1 INTERMEDIATE COURSE

1.25" ~ 448-1 SURFACE COURSE

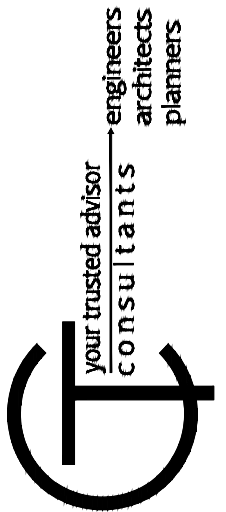
TACK COAT, IF DIRECTED

NEW DRIVE APRON TRANSITION
WITH SURFACE COURSE MATERIAL
2" TO 1" OVER 24"



EXISTING ASPHALT OR
CONCRETE DRIVE APRON

MILL TRANSITION FROM
0" TO 1" OVER 24"



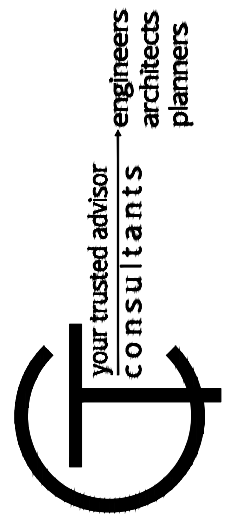
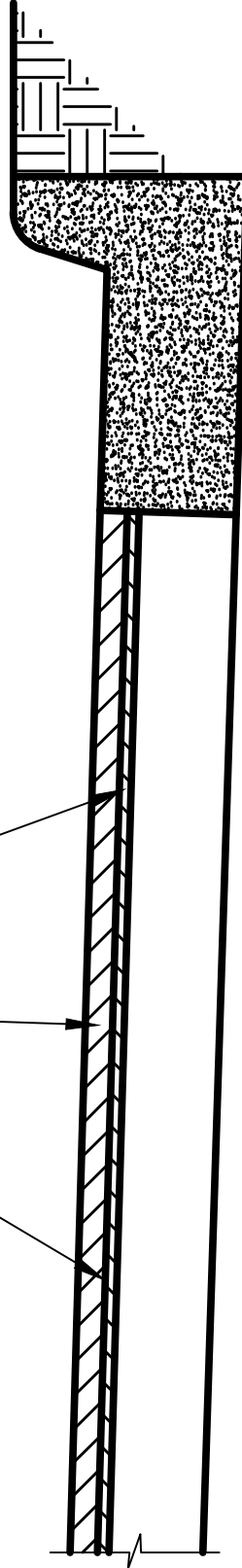
TYPICAL CROSS SECTION EXISTING ASPHALT - PARKWAY BOULEVARD

NTS

2" MILL, SINGLE CHIP SEAL AND
0.75 ~ 448-1 INTERMEDIATE

1.25" ~ 448-1 SURFACE COURSE

TACK COAT, IF DIRECTED



TYPICAL CROSS SECTION EXISTING ASPHALT WITH CURB & GUTTER

NTS