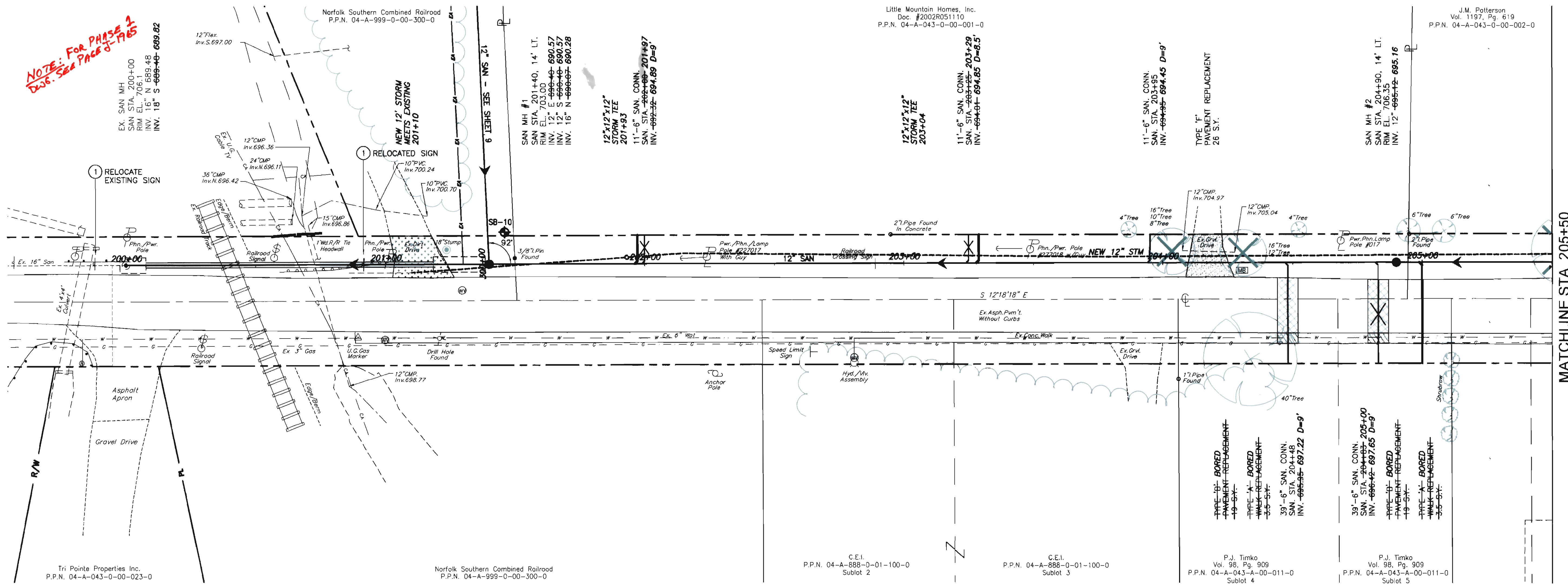


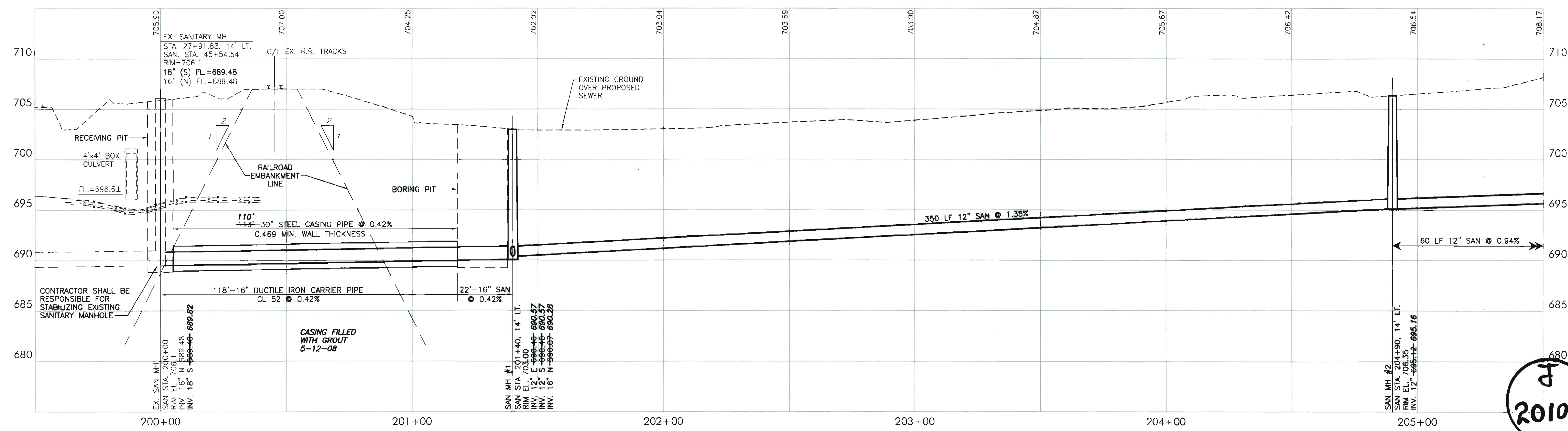
**NOTE: FOR PHASE 2
Dwg. See Page 8-1965**



- NOTES:**
1. CONTRACTOR SHALL FOLLOW ALL REQUIREMENTS OF NORFOLK SOUTHERN'S NSCE-B SPECIFICATIONS.
 2. PIPE LINE AND CROSSING TO BE INSTALLED AND MAINTAINED IN ACCORDANCE WITH LAST APPROVED AMERICAN RAILWAY ENGINEERING AND MAINTENANCE OF WAY ASSOCIATION SPECIFICATIONS FOR PIPELINES CONVEYING FLAMMABLE AND NONFLAMMABLE SUBSTANCES.

① SIGN AND POST TO BE RELOCATED

MAPLE STREET - 50'



2010

AS-BUILT 9/4/08

MAPLE STREET
PLAN & PROFILE
STA. 200+00 TO 205+50

SANITARY SEWER IMPROVEMENTS
PHASE 2
PERRY VILLAGE & PERRY TOWNSHIP - LAKE COUNTY - OHIO

DATE: 7-11-07
 DRAWN BY: SLS
 CHECKED BY: P.E.H.
 PROJECT: SANITARY SEWER IMPROVEMENTS PHASE 2
 SHEET: 4 OF 14

4
14